

TWO-STOREY TOWNHOME

THE KELLY

1,598 sq. ft.
(INCL. 11 SQ. FT. OPEN TO BELOW)



English Manor (EM)



French Chateau (FR)



Traditional (TA)



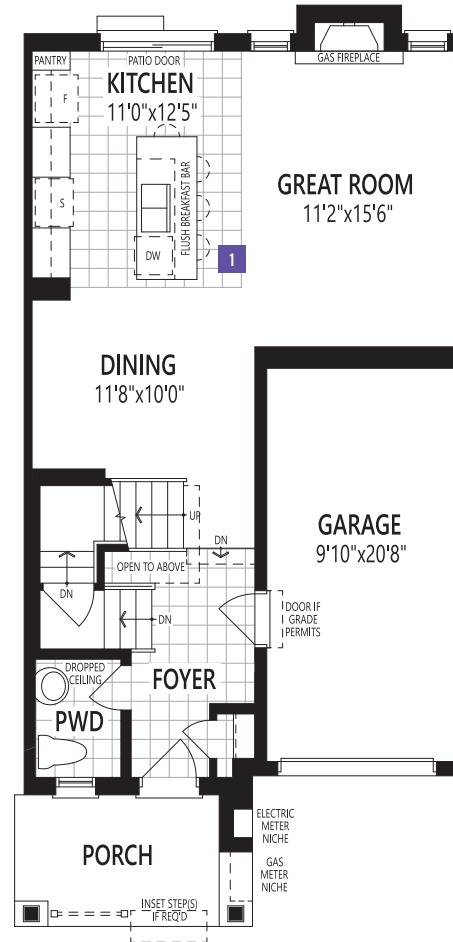
Transitional (TN)

KT&B All illustrations are artist's concept. Specifications, terms and conditions are subject to change without notice. All measurements and dimensions are approximate only and not guaranteed to be exact or to scale. These floor plans and room dimensions apply to the 'English Manor' elevation of this model type. Actual usable floor space may vary from the stated floor area. Plans and room dimensions may vary according to elevation. Plan may be built as the mirror image. "Quiet wall" (where shown) means a wall in which additional insulation has been installed. This will assist in reducing, but not eliminating, ambient sound from adjoining rooms and mechanical systems. The extent of the reduction will vary depending upon various factors including, without limitation, the presence and extent of mechanical systems located in the wall. Lots with a rear-lot/side-lot catch basin easement will be required to purchase the inbound or alternate fireplace option. Please consult your sales representative. E.&O.E. September 2023. Copyright 2023 – Mattamy Homes Limited.

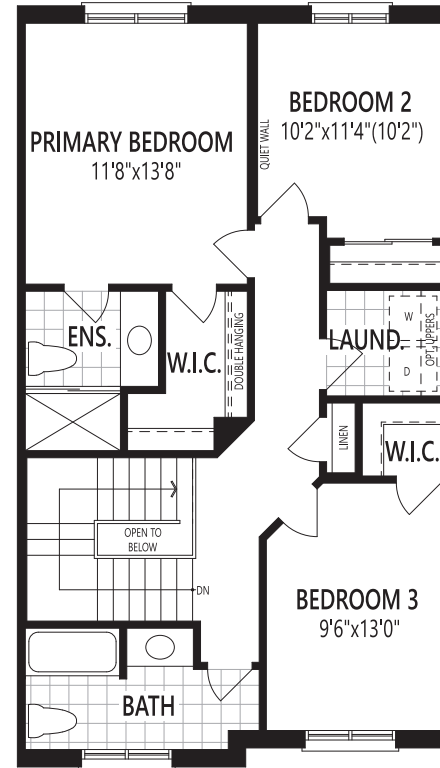
TWO-STORY TOWNHOME

THE KELLY

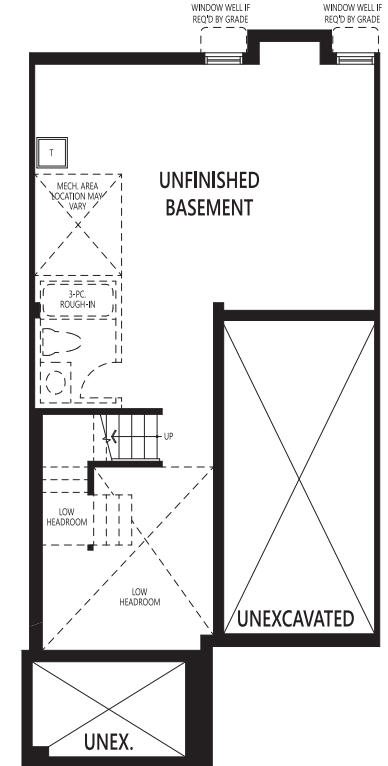
1,598 sq. ft.
(INCL. 11 SQ. FT. OPEN TO BELOW)



GROUND FLOOR



SECOND FLOOR



BASEMENT

KTHB All illustrations are artist's concept. Specifications, terms and conditions are subject to change without notice. All measurements and dimensions are approximate only and not guaranteed to be exact or to scale. These floor plans and room dimensions apply to the 'English Manor' elevation of this model type. Actual usable floor space may vary from the stated floor area. Plans and room dimensions may vary according to elevation. Plan may be built as the mirror image. "Quiet wall" (where shown) means a wall in which additional insulation has been installed. This will assist in reducing, but not eliminating, ambient sound from adjoining rooms and mechanical systems. The extent of the reduction will vary depending upon various factors including, without limitation, the presence and extent of mechanical systems located in the wall. Lots with a rear-lot/side-lot catch basin easement will be required to purchase the inbound or alternate fireplace option. Please consult your sales representative. E.&O.E. September 2023. Copyright 2023 - Mattamy Homes Limited.

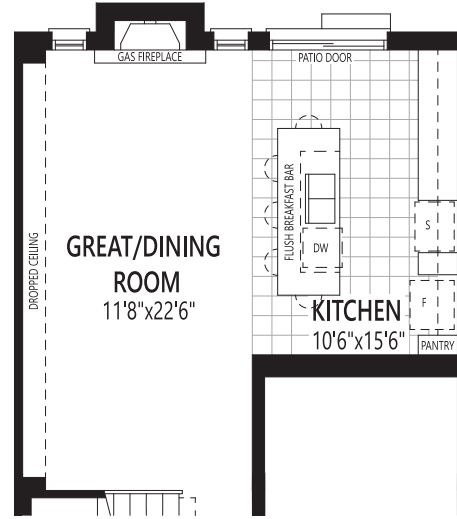
TWO-STOREY TOWNHOME

THE KELLY

1,598 sq. ft.
(INCL. 11 SQ. FT. OPEN TO BELOW)

GROUND FLOOR OPTION

1 ALTERNATE GROUND FLOOR



INCLUDED

KT&B All illustrations are artist's concept. Specifications, terms and conditions are subject to change without notice. All measurements and dimensions are approximate only and not guaranteed to be exact or to scale. These floor plans and room dimensions apply to the 'English Manor' elevation of this model type. Actual usable floor space may vary from the stated floor area. Plans and room dimensions may vary according to elevation. Plan may be built as the mirror image. "Quiet wall" (where shown) means a wall in which additional insulation has been installed. This will assist in reducing, but not eliminating, ambient sound from adjoining rooms and mechanical systems. The extent of the reduction will vary depending upon various factors including, without limitation, the presence and extent of mechanical systems located in the wall. Lots with a rear-lot/side-lot catch basin easement will be required to purchase the inbound or alternate fireplace option. Please consult your sales representative. E.&O.E. September 2023. Copyright 2023 – Mattamy Homes Limited.

TWO-STOREY TOWNHOME

THE LAUREL

1,717 sq. ft.
(INCL. 18 SQ. FT. OPEN TO BELOW)



French Chateau (FR)



English Manor (EM)



Traditional (TA)



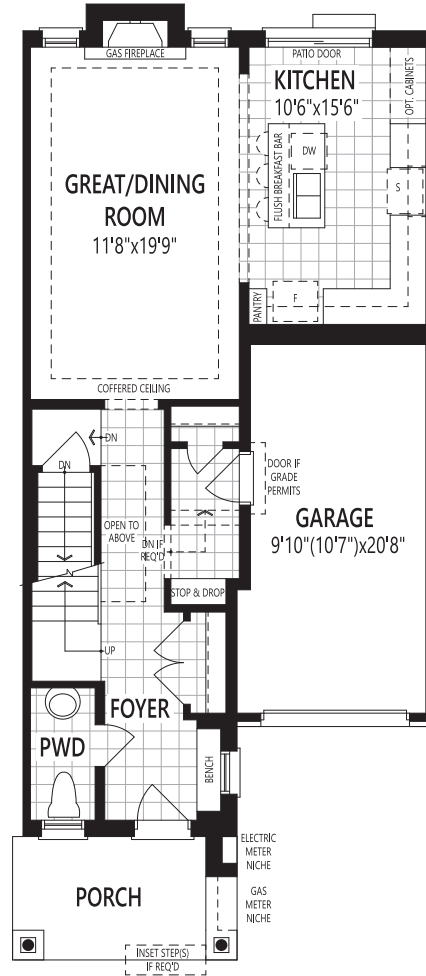
Transitional (TN)

KTHC All illustrations are artist's concept. Specifications, terms and conditions are subject to change without notice. All measurements and dimensions are approximate only and not guaranteed to be exact or to scale. These floor plans and room dimensions apply to the 'French Chateau' elevation of this model type. Actual usable floor space may vary from the stated floor area. Plans and room dimensions may vary according to elevation. Plan may be built as the mirror image. "Quiet wall" (where shown) means a wall in which additional insulation has been installed. This will assist in reducing, but not eliminating, ambient sound from adjoining rooms and mechanical systems. The extent of the reduction will vary depending upon various factors including, without limitation, the presence and extent of mechanical systems located in the wall. Lots with a rear-lot/side-lot catch basin easement will be required to purchase the inbound or alternate fireplace option. Please consult your sales representative. E.&O.E. September 2023. Copyright 2023 – Mattamy Homes Limited.

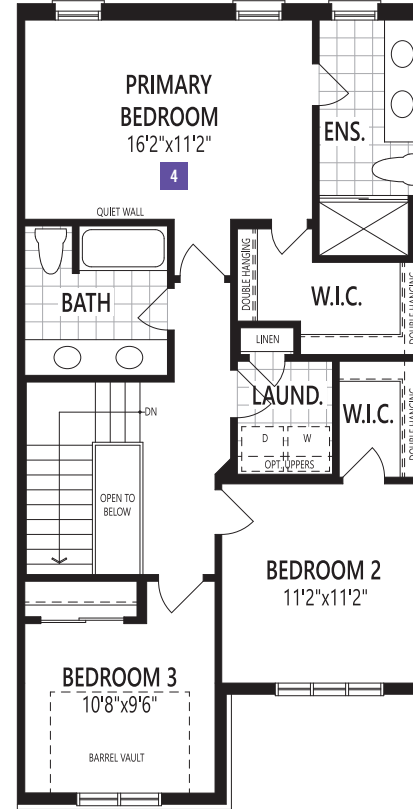
TWO-STOREY TOWNHOME

THE LAUREL

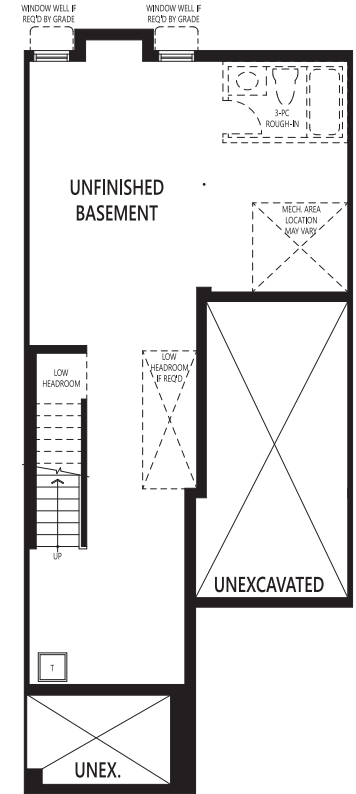
1,717 sq. ft.
(INCL. 18 SQ. FT. OPEN TO BELOW)



GROUND FLOOR



SECOND FLOOR



BASEMENT

KTNC All illustrations are artist's concept. Specifications, terms and conditions are subject to change without notice. All measurements and dimensions are approximate only and not guaranteed to be exact or to scale. These floor plans and room dimensions apply to the 'French Chateau' elevation of this model type. Actual usable floor space may vary from the stated floor area. Plans and room dimensions may vary according to elevation. Plan may be built as the mirror image. "Quiet wall" (where shown) means a wall in which additional insulation has been installed. This will assist in reducing, but not eliminating, ambient sound from adjoining rooms and mechanical systems. The extent of the reduction will vary depending upon various factors including, without limitation, the presence and extent of mechanical systems located in the wall. Lots with a rear-lot/side-lot catch basin easement will be required to purchase the in-bound or alternate fireplace option. Please consult your sales representative. E.&O.E. September 2023. Copyright 2023 – Mattamy Homes Limited.

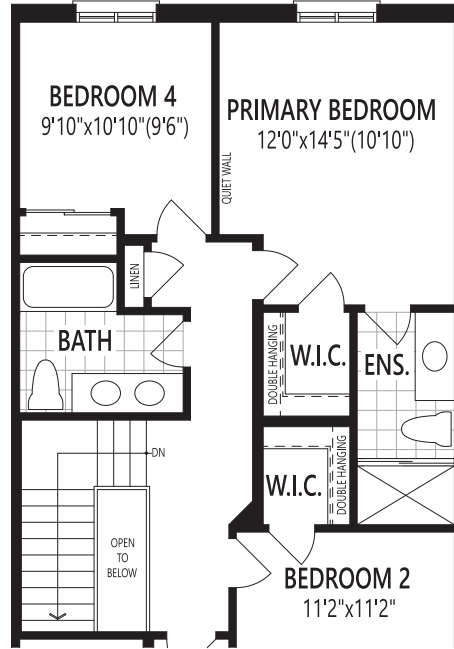
TWO-STOREY TOWNHOME

THE LAUREL

1,717 sq. ft.
(INCL. 18 SQ. FT. OPEN TO BELOW)

SECOND FLOOR OPTION

4 4-BEDROOM PLAN (LAUNDRY RELOCATED TO BASEMENT)



INCLUDED

KTHC All illustrations are artist's concept. Specifications, terms and conditions are subject to change without notice. All measurements and dimensions are approximate only and not guaranteed to be exact or to scale. These floor plans and room dimensions apply to the 'French Chateau' elevation of this model type. Actual usable floor space may vary from the stated floor area. Plans and room dimensions may vary according to elevation. Plan may be built as the mirror image. "Quiet wall" (where shown) means a wall in which additional insulation has been installed. This will assist in reducing, but not eliminating, ambient sound from adjoining rooms and mechanical systems. The extent of the reduction will vary depending upon various factors including, without limitation, the presence and extent of mechanical systems located in the wall. Lots with a rear-lot/side-lot catch basin easement will be required to purchase the inbound or alternate fireplace option. Please consult your sales representative. E.&O.E. September 2023. Copyright 2023 – Mattamy Homes Limited.

TWO-STOREY TOWNHOME

THE MINT 1,897 sq. ft.



Transitional (TN)



English Manor (EM)



French Chateau (FR)

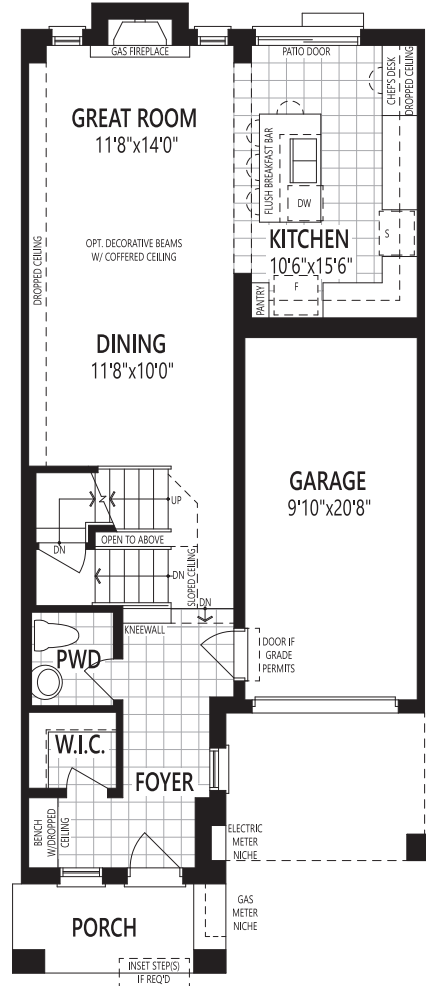


Traditional (TA)

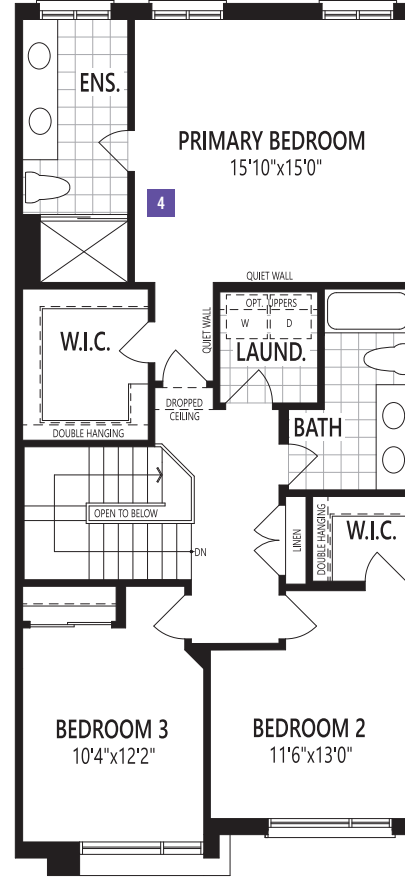
KTND All illustrations are artist's concept. Specifications, terms and conditions are subject to change without notice. All measurements and dimensions are approximate only and not guaranteed to be exact or to scale. These floor plans and room dimensions apply to the 'Transitional' elevation of this model type. Actual usable floor space may vary from the stated floor area. Plans and room dimensions may vary according to elevation. Plan may be built as the mirror image. "Quiet wall" (where shown) means a wall in which additional insulation has been installed. This will assist in reducing, but not eliminating, ambient sound from adjoining rooms and mechanical systems. The extent of the reduction will vary depending upon various factors including, without limitation, the presence and extent of mechanical systems located in the wall. Lots with a rear-lot/side-lot catch basin easement will be required to purchase the inbound or alternate fireplace option. Please consult your sales representative. E.&O.E. September 2023. Copyright 2023 – Mattamy Homes Limited.

TWO-STOREY TOWNHOME

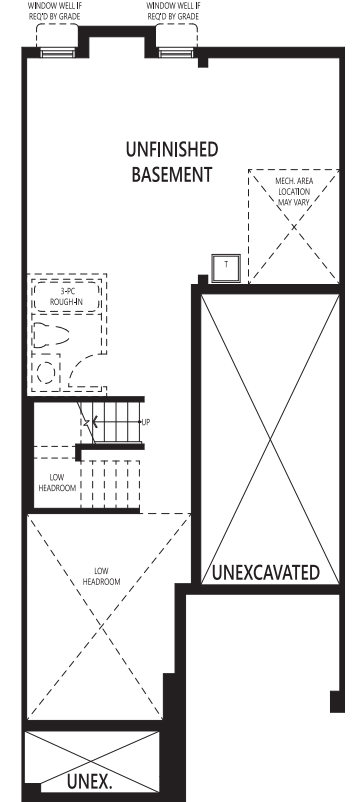
THE
MINT
1,897 sq. ft.



GROUND FLOOR



SECOND FLOOR



BASEMENT

KTND All illustrations are artist's concept. Specifications, terms and conditions are subject to change without notice. All measurements and dimensions are approximate only and not guaranteed to be exact or to scale. These floor plans and room dimensions apply to the 'Transitional' elevation of this model type. Actual usable floor space may vary from the stated floor area. Plans and room dimensions may vary according to elevation. Plan may be built as the mirror image. "Quiet wall" (where shown) means a wall in which additional insulation has been installed. This will assist in reducing, but not eliminating, ambient sound from adjoining rooms and mechanical systems. The extent of the reduction will vary depending upon various factors including, without limitation, the presence and extent of mechanical systems located in the wall. Lots with a rear-lot/side-lot catch basin easement will be required to purchase the inbound or alternate fireplace option. Please consult your sales representative. E.&O.E. September 2023. Copyright 2023 – Mattamy Homes Limited.

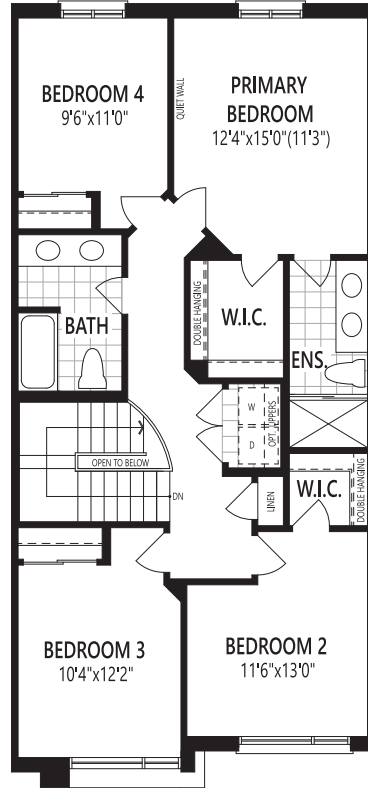
TWO-STOREY TOWNHOME

THE MINT

1,897 sq. ft.

SECOND FLOOR OPTION

4 4-BEDROOM PLAN



INCLUDED

KTND All illustrations are artist's concept. Specifications, terms and conditions are subject to change without notice. All measurements and dimensions are approximate only and not guaranteed to be exact or to scale. These floor plans and room dimensions apply to the 'Transitional' elevation of this model type. Actual usable floor space may vary from the stated floor area. Plans and room dimensions may vary according to elevation. Plan may be built as the mirror image. "Quiet wall" (where shown) means a wall in which additional insulation has been installed. This will assist in reducing, but not eliminating, ambient sound from adjoining rooms and mechanical systems. The extent of the reduction will vary depending upon various factors including, without limitation, the presence and extent of mechanical systems located in the wall. Lots with a rear-lot/side-lot catch basin easement will be required to purchase the inboard or alternate fireplace option. Please consult your sales representative. E.&O.E. September 2023. Copyright 2023 – Mattamy Homes Limited.

TWO-STOREY TOWNHOME

THE MINT END 1,938 sq. ft.



English Manor (EM)



French Chateau (FR)



Traditional (TA)

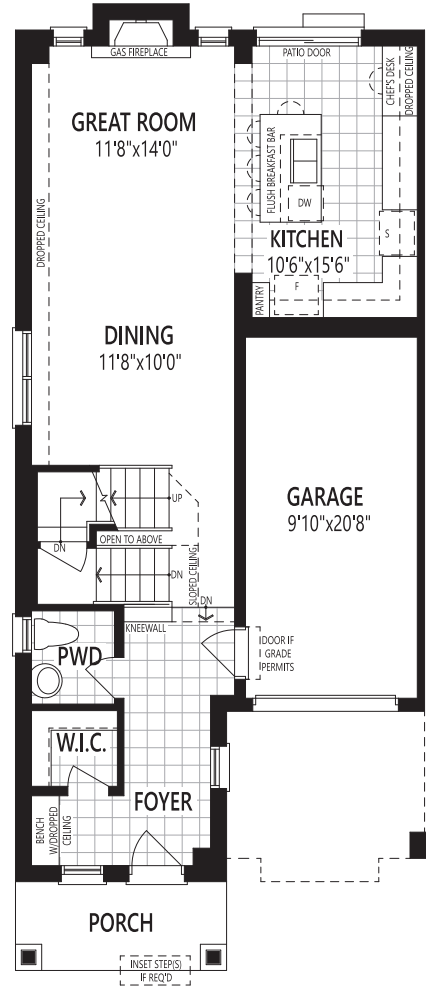


Transitional (TN)

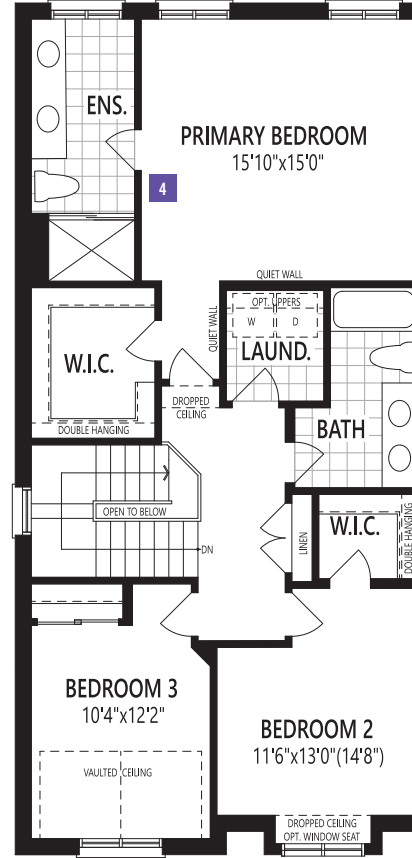
KTHE All illustrations are artist's concept. Specifications, terms and conditions are subject to change without notice. All measurements and dimensions are approximate only and not guaranteed to be exact or to scale. These floor plans and room dimensions apply to the 'English Manor' elevation of this model type. Actual usable floor space may vary from the stated floor area. Plans and room dimensions may vary according to elevation. Plan may be built as the mirror image. "Quiet wall" (where shown) means a wall in which additional insulation has been installed. This will assist in reducing, but not eliminating, ambient sound from adjoining rooms and mechanical systems. The extent of the reduction will vary depending upon various factors including, without limitation, the presence and extent of mechanical systems located in the wall. Lots with a rear-lot/side-lot catch basin easement will be required to purchase the inbound or alternate fireplace option. Please consult your sales representative. E.&O.E. September 2023. Copyright 2023 - Mattamy Homes Limited.

TWO-STOREY TOWNHOME

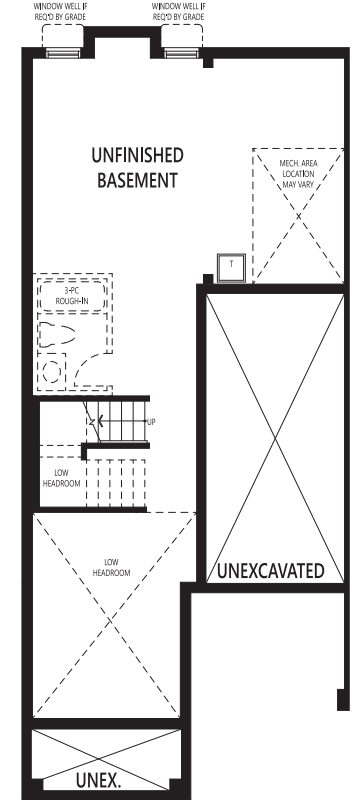
THE
MINT END
1,938 sq. ft.



GROUND FLOOR



SECOND FLOOR



BASEMENT

KTHE All illustrations are artist's concept. Specifications, terms and conditions are subject to change without notice. All measurements and dimensions are approximate only and not guaranteed to be exact or to scale. These floor plans and room dimensions apply to the 'English Manor' elevation of this model type. Actual usable floor space may vary from the stated floor area. Plans and room dimensions may vary according to elevation. Plan may be built as the mirror image. "Quiet wall" (where shown) means a wall in which additional insulation has been installed. This will assist in reducing, but not eliminating, ambient sound from adjoining rooms and mechanical systems. The extent of the reduction will vary depending upon various factors including, without limitation, the presence and extent of mechanical systems located in the wall. Lots with a rear-lot/side-lot catch basin easement will be required to purchase the inbound or alternate fireplace option. Please consult your sales representative. E.&O.E. September 2023. Copyright 2023 – Mattamy Homes Limited.

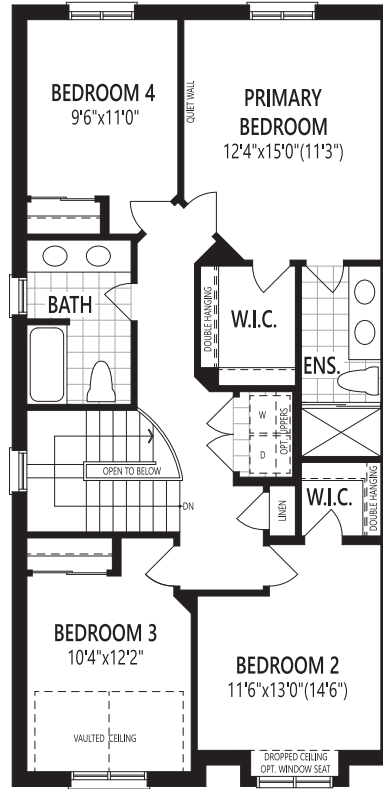
TWO-STOREY TOWNHOME

THE MINT END

1,938 sq. ft.

SECOND FLOOR OPTION

4 4-BEDROOM PLAN



INCLUDED

KTHE All illustrations are artist's concept. Specifications, terms and conditions are subject to change without notice. All measurements and dimensions are approximate only and not guaranteed to be exact or to scale. These floor plans and room dimensions apply to the 'English Manor' elevation of this model type. Actual usable floor space may vary from the stated floor area. Plans and room dimensions may vary according to elevation. Plan may be built as the mirror image. "Quiet wall" (where shown) means a wall in which additional insulation has been installed. This will assist in reducing, but not eliminating, ambient sound from adjoining rooms and mechanical systems. The extent of the reduction will vary depending upon various factors including, without limitation, the presence and extent of mechanical systems located in the wall. Lots with a rear-lot/side-lot catch basin easement will be required to purchase the inboard or alternate fireplace option. Please consult your sales representative. E.&O.E. September 2023. Copyright 2023 – Mattamy Homes Limited.

TWO-STOREY TOWNHOME

THE SAGE CORNER

1,996 sq. ft.

(INCL. 20 SQ. FT. OPEN TO BELOW)



Traditional (TA)



English Manor (EM)



French Chateau (FR)



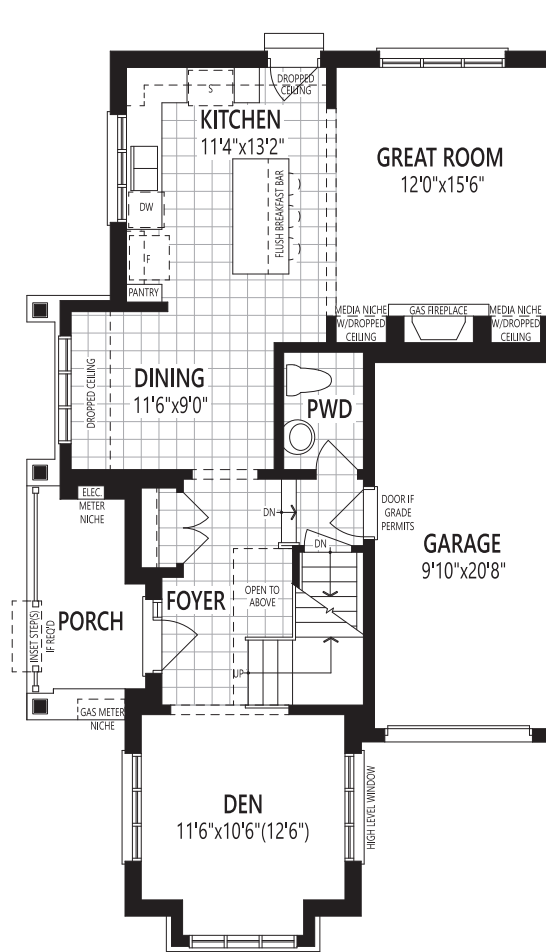
Transitional (TN)

KTFF All illustrations are artist's concept. Specifications, terms and conditions are subject to change without notice. All measurements and dimensions are approximate only and not guaranteed to be exact or to scale. These floor plans and room dimensions apply to the 'Traditional' elevation of this model type. Actual usable floor space may vary from the stated floor area. Plans and room dimensions may vary according to elevation. Plan may be built as the mirror image. "Quiet wall" (where shown) means a wall in which additional insulation has been installed. This will assist in reducing, but not eliminating, ambient sound from adjoining rooms and mechanical systems. The extent of the reduction will vary depending upon various factors including, without limitation, the presence and extent of mechanical systems located in the wall. Lots with a rear-lot/side-lot catch basin easement will be required to purchase the inbound or alternate fireplace option. Please consult your sales representative. E.&O.E. September 2023. Copyright 2023 - Mattamy Homes Limited.

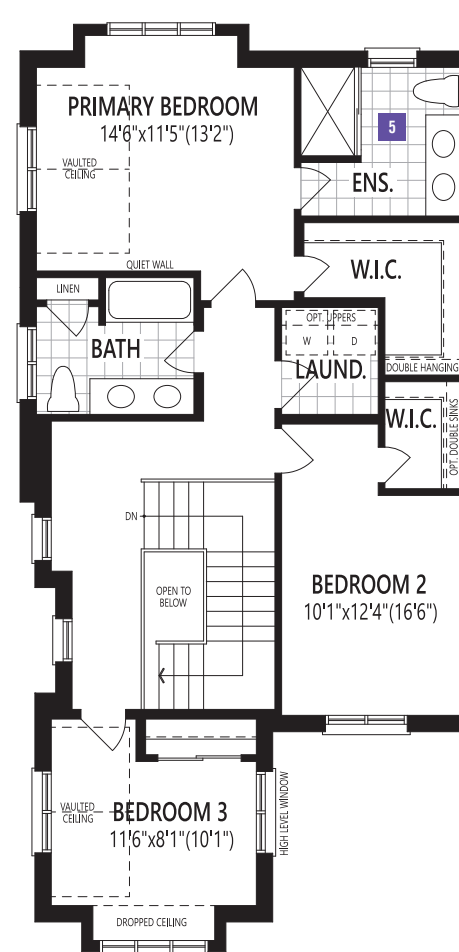
TWO-STOREY TOWNHOME

THE SAGE CORNER

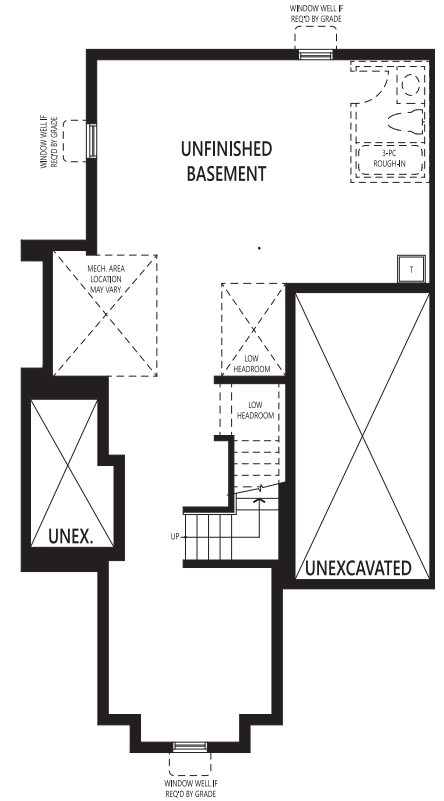
1,996 sq. ft.
(INCL. 20 SQ. FT. OPEN TO BELOW)



GROUND FLOOR



SECOND FLOOR



BASEMENT

KTHF All illustrations are artist's concept. Specifications, terms and conditions are subject to change without notice. All measurements and dimensions are approximate only and not guaranteed to be exact or to scale. These floor plans and room dimensions apply to the 'Traditional' elevation of this model type. Actual usable floor space may vary from the stated floor area. Plans and room dimensions may vary according to elevation. Plan may be built as the mirror image. "Quiet wall" (where shown) means a wall in which additional insulation has been installed. This will assist in reducing, but not eliminating, ambient sound from adjoining rooms and mechanical systems. The extent of the reduction will vary depending upon various factors including, without limitation, the presence and extent of mechanical systems located in the wall. Lots with a rear-lot/side-lot catch basin easement will be required to purchase the inboard or alternate fireplace option. Please consult your sales representative. E.&O.E. September 2023. Copyright 2023 - Mattamy Homes Limited.

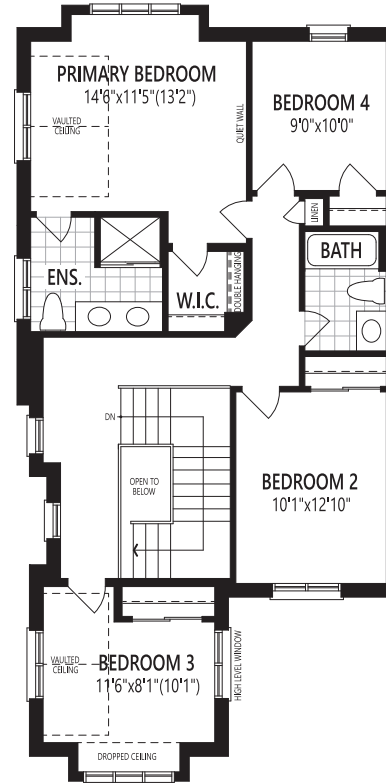
TWO-STOREY TOWNHOME

THE SAGE CORNER

1,996 sq. ft.
(INCL. 20 SQ. FT. OPEN TO BELOW)

SECOND FLOOR OPTION

5 4-BEDROOM PLAN (LAUNDRY RELOCATED TO BASEMENT)



INCLUDED

KTHF All illustrations are artist's concept. Specifications, terms and conditions are subject to change without notice. All measurements and dimensions are approximate only and not guaranteed to be exact or to scale. These floor plans and room dimensions apply to the 'Traditional' elevation of this model type. Actual usable floor space may vary from the stated floor area. Plans and room dimensions may vary according to elevation. Plan may be built as the mirror image. "Quiet wall" (where shown) means a wall in which additional insulation has been installed. This will assist in reducing, but not eliminating, ambient sound from adjoining rooms and mechanical systems. The extent of the reduction will vary depending upon various factors including, without limitation, the presence and extent of mechanical systems located in the wall. Lots with a rear-lot/side-lot catch basin easement will be required to purchase the inboard or alternate fireplace option. Please consult your sales representative. E.&O.E. September 2023. Copyright 2023 – Mattamy Homes Limited.