

TERRACE
PARK TOWNS

in Cornell Rouge

SECOND RESIDENTIAL UNIT*

"More Homes Built Faster"***

We at State Building Group and Forest Hill Homes pride ourselves in creating innovative, well-designed homes with functional and livable floorplans. All our homes in this phase will have the flexibility for a second residential unit with a separate private entrance to accommodate multi-generational living or an additional source of income. This is one of the last opportunities to purchase the perfect home for you and your family in one of Markham's most well-established communities, Cornell Rouge.

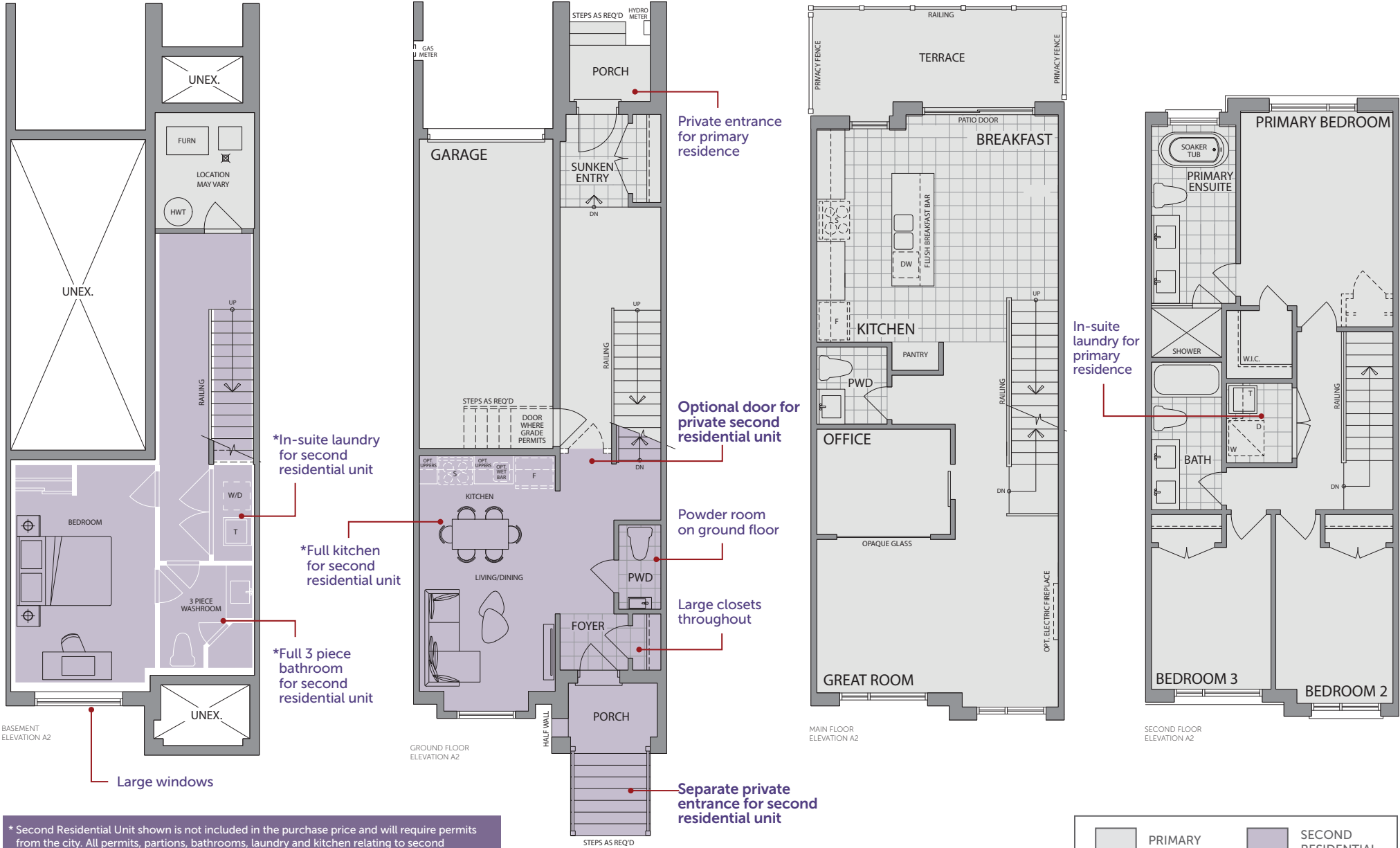
For more information
speak to a sales representative



 FOREST HILL
HOMES

 State

*** More Homes Built Faster (Bill 23) received Royal Assent on November 28, 2022 permitting second residential units.



* Second Residential Unit shown is not included in the purchase price and will require permits from the city. All permits, partitions, bathrooms, laundry and kitchen relating to second residential unit is the purchasers responsibility to complete after closing at the purchasers cost. Ground floor kitchen is not included in the purchase price. Basements are sold unfinished.

**Square footage is representative of the average unit size of this model type and may vary from the stated square footage. Actual usable floor space may vary from stated floorplan area. Please speak to a sales representative for details. All elevations, renderings, floorplans, furniture layouts, siteplans and landscaping details are artist's concept and the Vendor makes no representation or warranty relating to same. The Vendor shall have the right to construct the reverse mirror image of the dwelling, including reversal of the garage siting and reversal of the interior floor plan layout. Furniture displayed is not to scale and is shown for illustration purposes only and does not necessarily reflect the fixtures, finishes, appliances and/ or electrical plan of the home and is not included in the purchase price. Homes are sold unfinished and basements unfinished. Materials, measurements, specifications and floorplans are subject to change without notice. All dimensions are approximate. Ceiling heights are subject to bulkheads. Locations of basement: furnace, hot water tank and optional 3 pc. rough-in bath and locations and number of posts and beams may vary and are determined by architect and may not be located as shown on brochures and Purchasers shall be deemed to accept same. E. & O. E. (TH2/TH2 END) September 2023