

WILDFLOWER SERIES

# Willow Corner 1



Rustic Farmhouse Elevation (B)  
1926 SQ.FT.

WILDFLOWER SERIES

# Willow Corner 1



Traditional Farmhouse Elevation (A)  
1926 SQ.FT.

# Willow Corner 1

WILDFLOWER SERIES

1926 SQ.FT. | 3 Bedrooms | 2.5 Baths | Double Car Garage

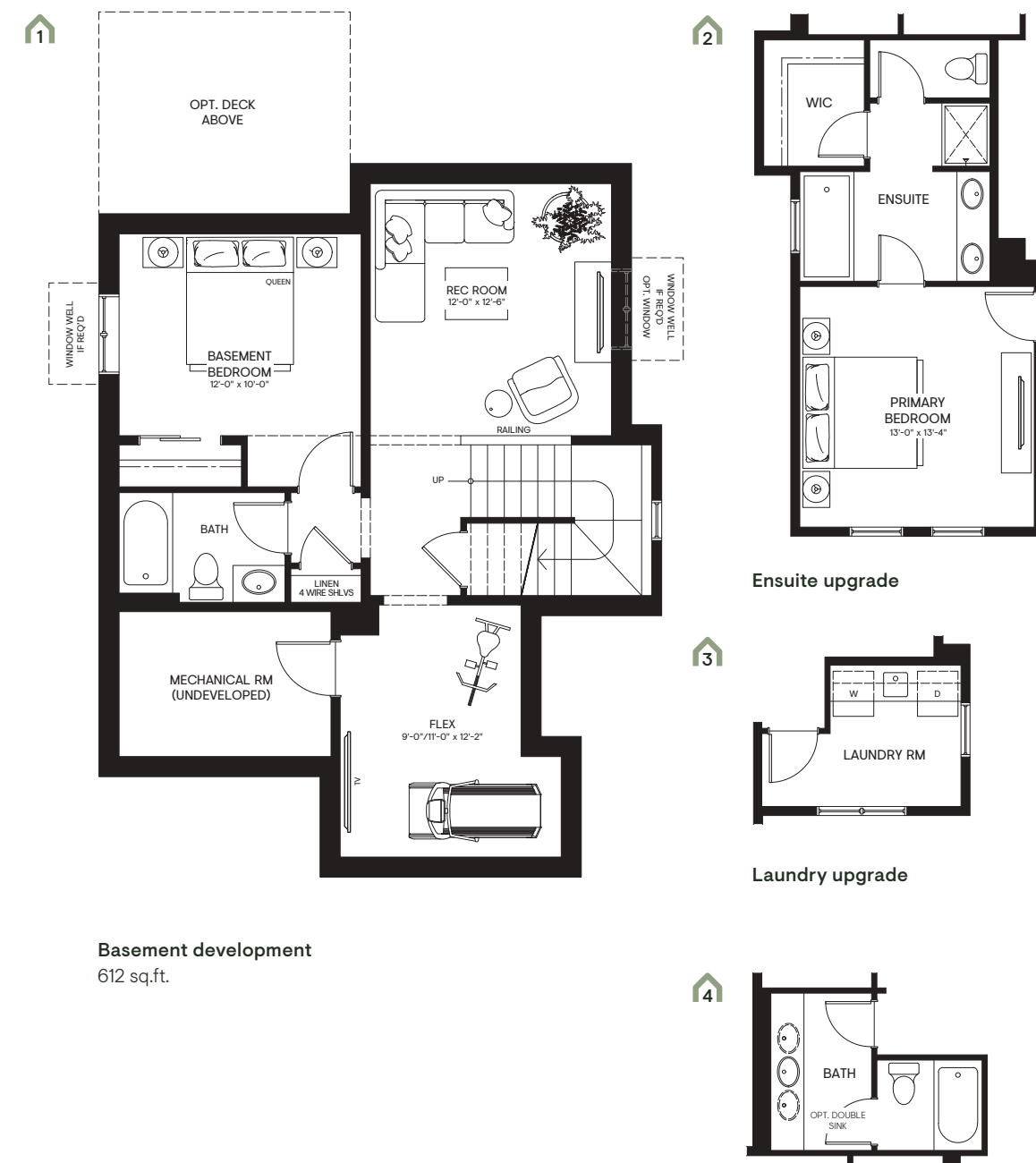


**Main floor**  
824 sq.ft.

**Upper floor**  
1102 sq.ft.

**Basement**  
(undeveloped)

## FLEX OPTIONS



**Basement development**  
612 sq.ft.

**Ensuite upgrade**

**Laundry upgrade**

**Bathroom upgrade**  
\*In lieu of study

The Developer reserves the right to make revisions if deemed appropriate in its sole discretion to all plans, dimensions, and specifications provided, including but not limited to window location and size. Actual usable floor space may vary from the stated floor area. The purchase price does not include any vehicles, accessories, or equipment shown. Renderings are artist's concepts only. Marketing floorplans reflect Traditional Farmhouse Elevation A (38SF3001C) unless otherwise stated. This drawing contains information which is proprietary to and is the property of the Developer and may not be used, reproduced, or disclosed in any manner other than in relation to the purchase of a home within this project without the permission of the Developer. Pricing subject to change without notice. E. & O. E. Revised September 2023.

WILDFLOWER SERIES  
Marigold 1

WILDFLOWER SERIES  
Marigold 1



Rustic Farmhouse Elevation (B)  
1881 SQ.FT.



Modern Farmhouse Elevation (C)  
1881 SQ.FT.

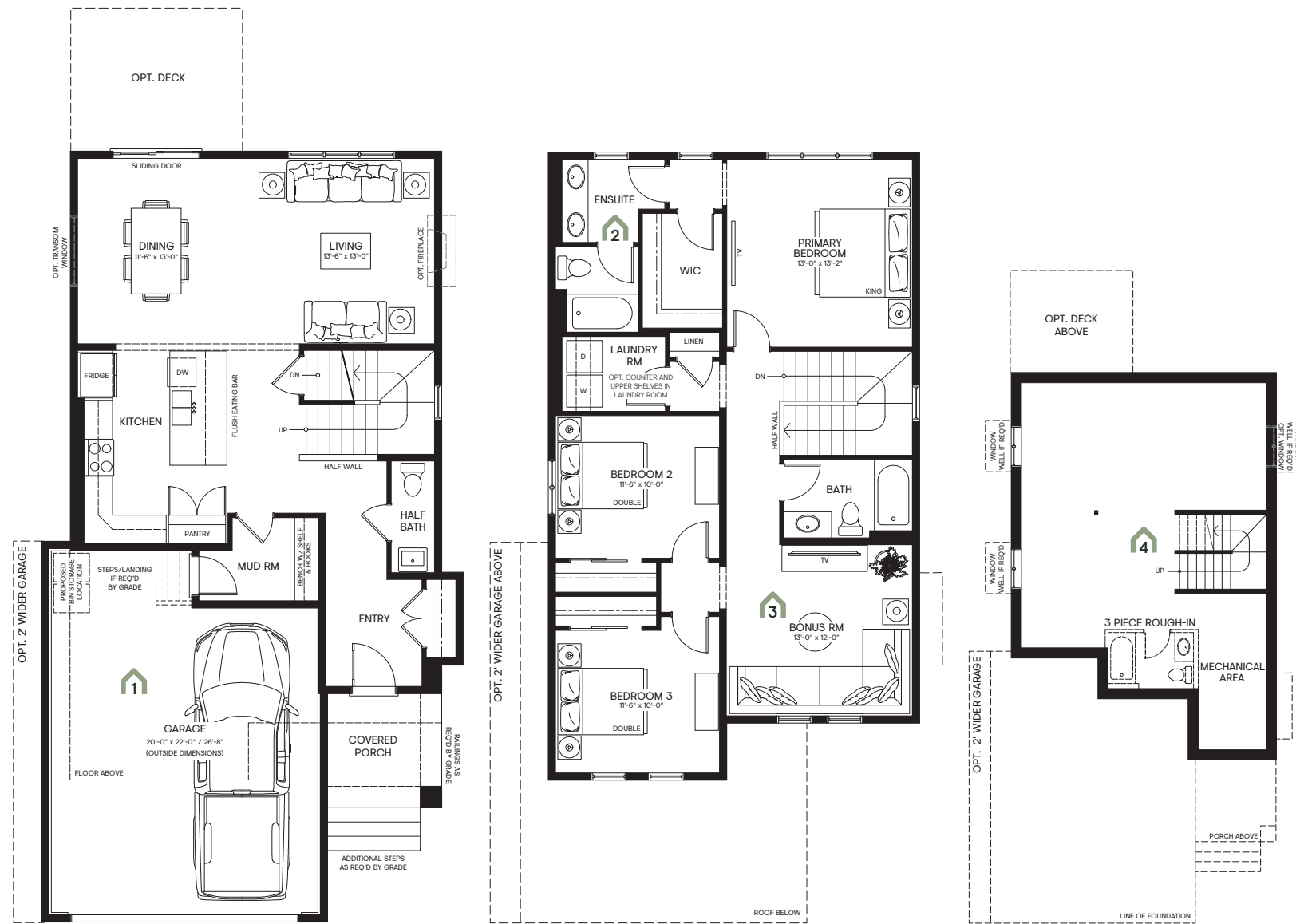


Traditional Farmhouse Elevation (A)  
1881 SQ.FT.

# Marigold 1

1881 SQ.FT. | 3 Bedrooms | 2.5 Baths | Double Car Garage

WILDFLOWER SERIES

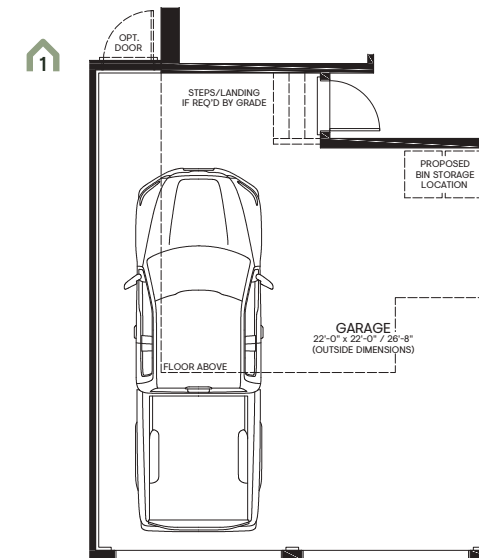


**Main floor**  
860 sq.ft.

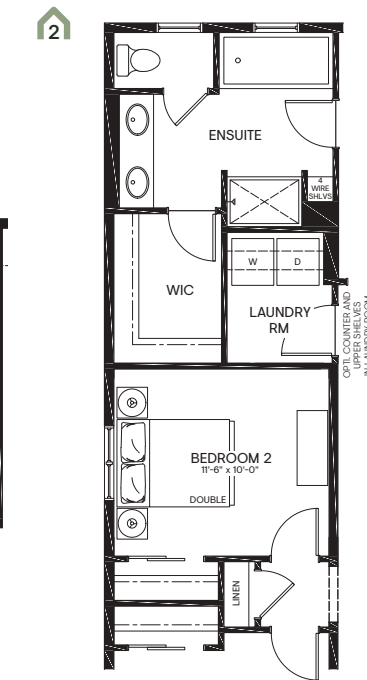
**Upper floor**  
1021 sq.ft.

**Basement**  
(undeveloped)

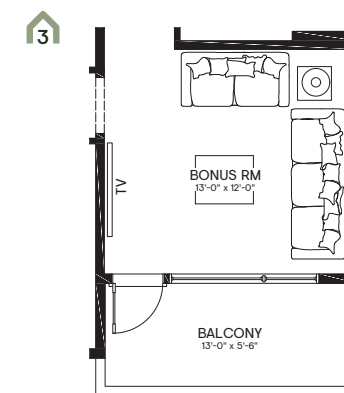
## FLEX OPTIONS



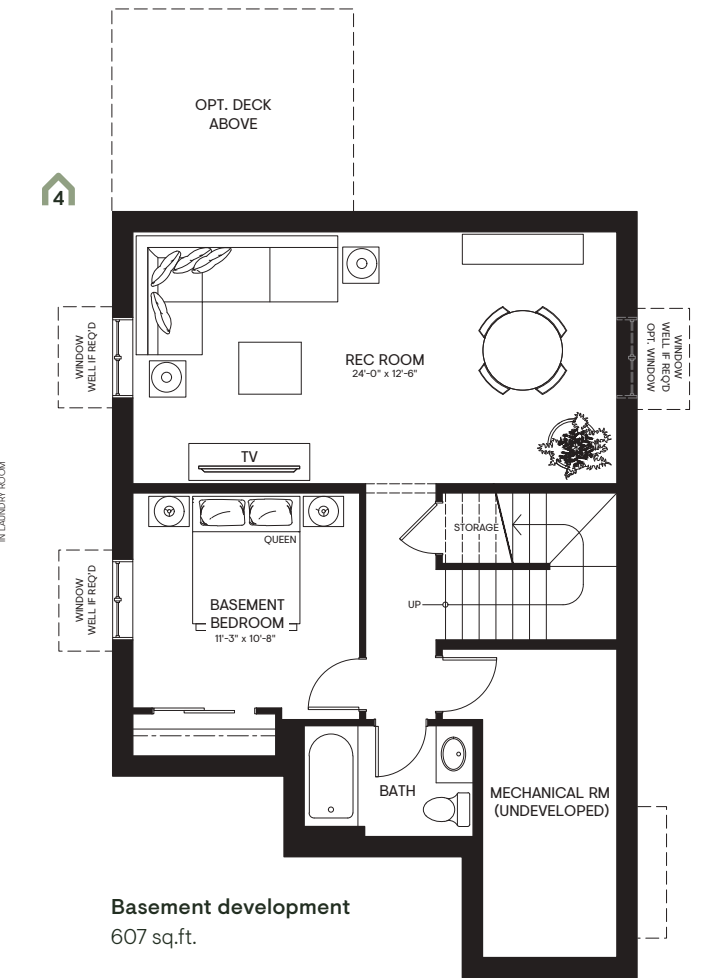
**2'-0" Additional garage width**  
\*Only available on 36' wide lots  
2 Garage doors or Single 18'-0"  
wide door available



**Ensuite upgrade with  
linen relocation**



**Balcony option**  
\*Only available with the Modern  
Farmhouse Elevation (C)



**Basement development**  
607 sq.ft.

The Developer reserves the right to make revisions if deemed appropriate in its sole discretion to all plans, dimensions, and specifications provided, including but not limited to window location and size. Actual usable floor space may vary from the stated floor area. The purchase price does not include any vehicles, accessories, or equipment shown. Renderings are artist's concepts only. Marketing floorplans reflect Traditional Farmhouse Elevation A (34SF2801) unless otherwise stated. This drawing contains information which is proprietary to and is the property of the Developer and may not be used, reproduced, or disclosed in any manner other than in relation to the purchase of a home within this project without the permission of the Developer. Pricing subject to change without notice. E. & O. E. Revised September 2023.

WILDFLOWER SERIES  
Marigold 2

WILDFLOWER SERIES  
Marigold 2



Rustic Farmhouse Elevation (B)  
2087 SQ.FT.



Modern Farmhouse Elevation (C)  
2087 SQ.FT.

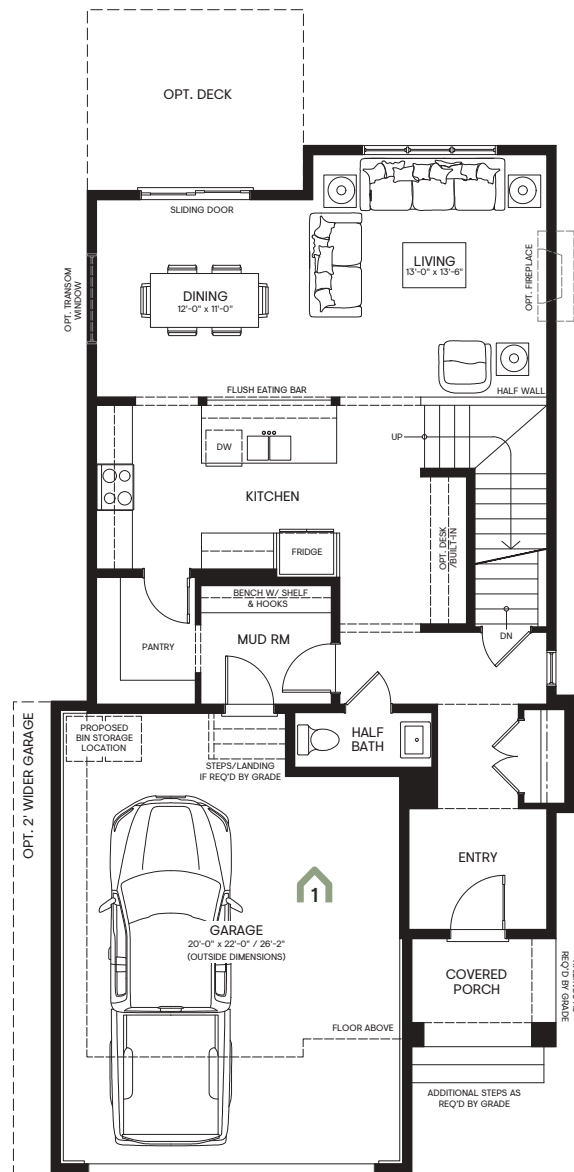


Traditional Farmhouse Elevation (A)  
2087 SQ.FT.

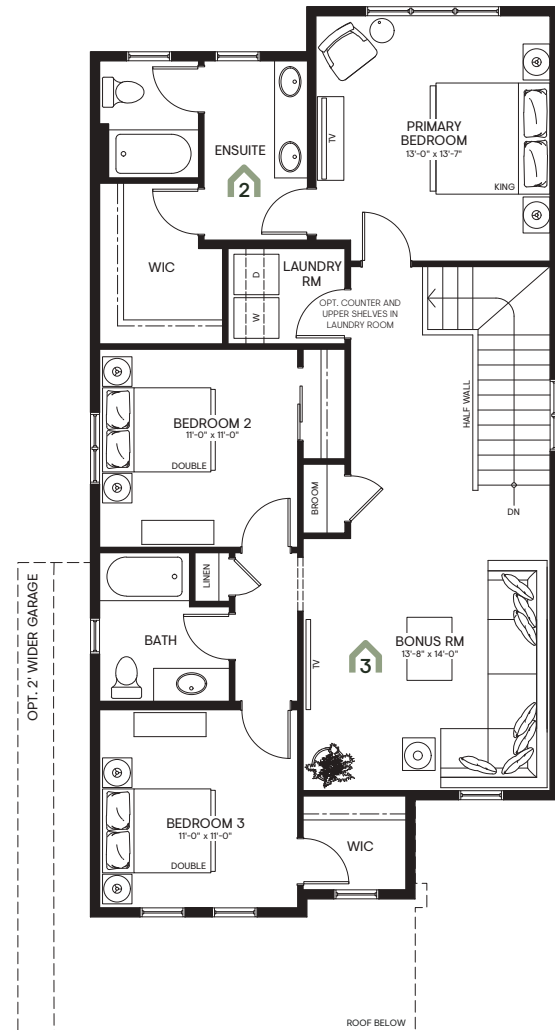
# Marigold 2

2087 SQ.FT. | 3 Bedrooms | 2.5 Baths | Double Car Garage

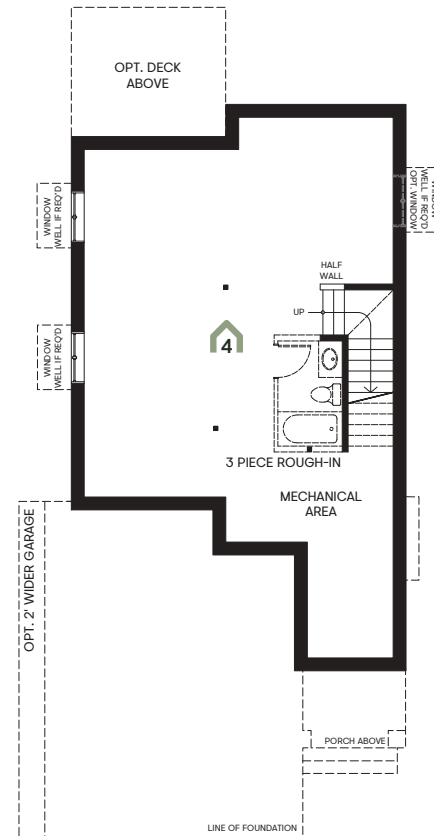
WILDFLOWER SERIES



Main floor  
926 sq.ft.

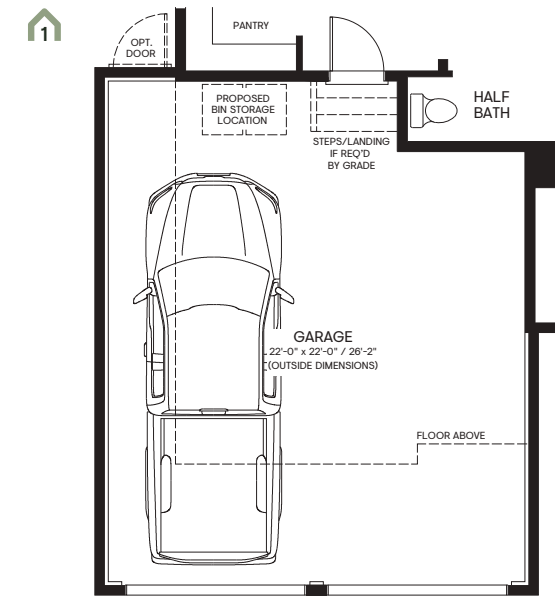


Upper floor  
1161 sq.ft.

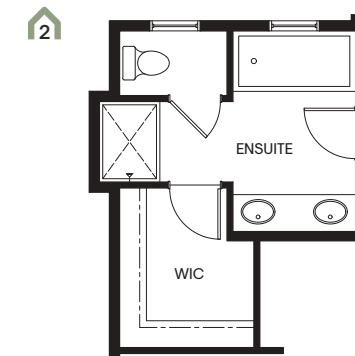


Basement  
(undeveloped)

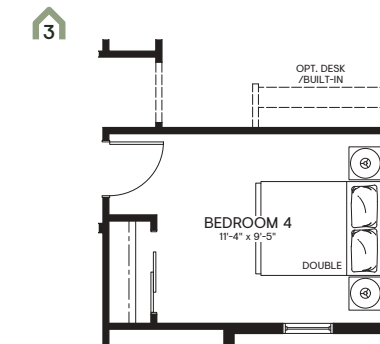
## FLEX OPTIONS



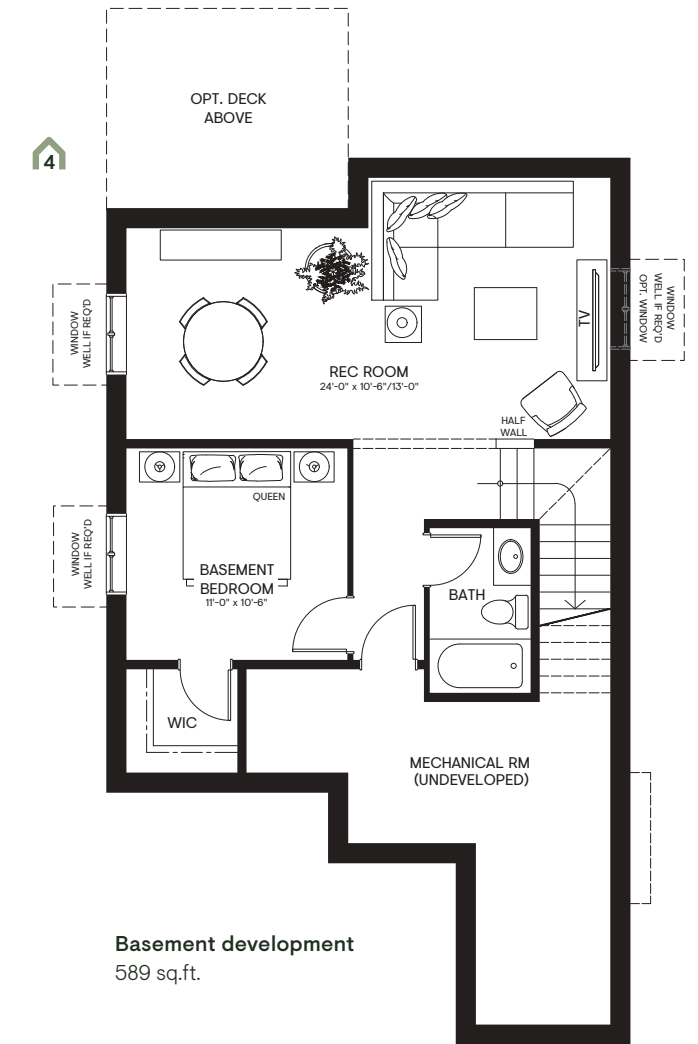
2'-0" Additional garage width  
\*Only available on 36' wide lots  
2 Garage doors or Single 18'-0" wide door available



Ensuite upgrade  
Adds 5 sq.ft.



4th Bedroom



Basement development  
589 sq.ft.

The Developer reserves the right to make revisions if deemed appropriate in its sole discretion to all plans, dimensions, and specifications provided, including but not limited to window location and size. Actual usable floor space may vary from the stated floor area. The purchase price does not include any vehicles, accessories, or equipment shown. Renderings are artist's concepts only. Marketing floorplans reflect Traditional Farmhouse Elevation A (34SF2802) unless otherwise stated. This drawing contains information which is proprietary to and is the property of the Developer and may not be used, reproduced, or disclosed in any manner other than in relation to the purchase of a home within this project without the permission of the Developer. Pricing subject to change without notice. E. & O. E. Revised September 2023.

WILDFLOWER SERIES

# Lily 1

WILDFLOWER SERIES

# Lily 1



Rustic Farmhouse Elevation (B)  
2191 SQ.FT.



Modern Farmhouse Elevation (C)  
2191 SQ.FT.



Traditional Farmhouse Elevation (A)  
2191 SQ.FT.

# Lily 1

2191 SQ.FT. | 3 Bedrooms | 2.5 Baths | Double Car Garage

# WILDFLOWER SERIES

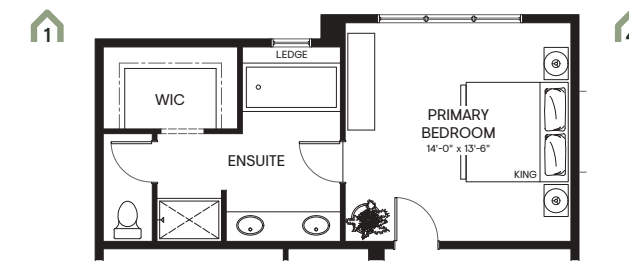


**Main floor**  
997 sq.ft.

**Upper floor**  
1194 sq.ft.

**Basement**  
(undeveloped)

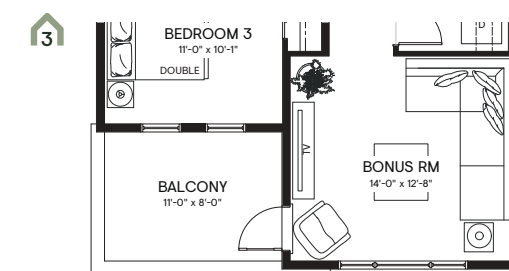
## FLEX OPTIONS



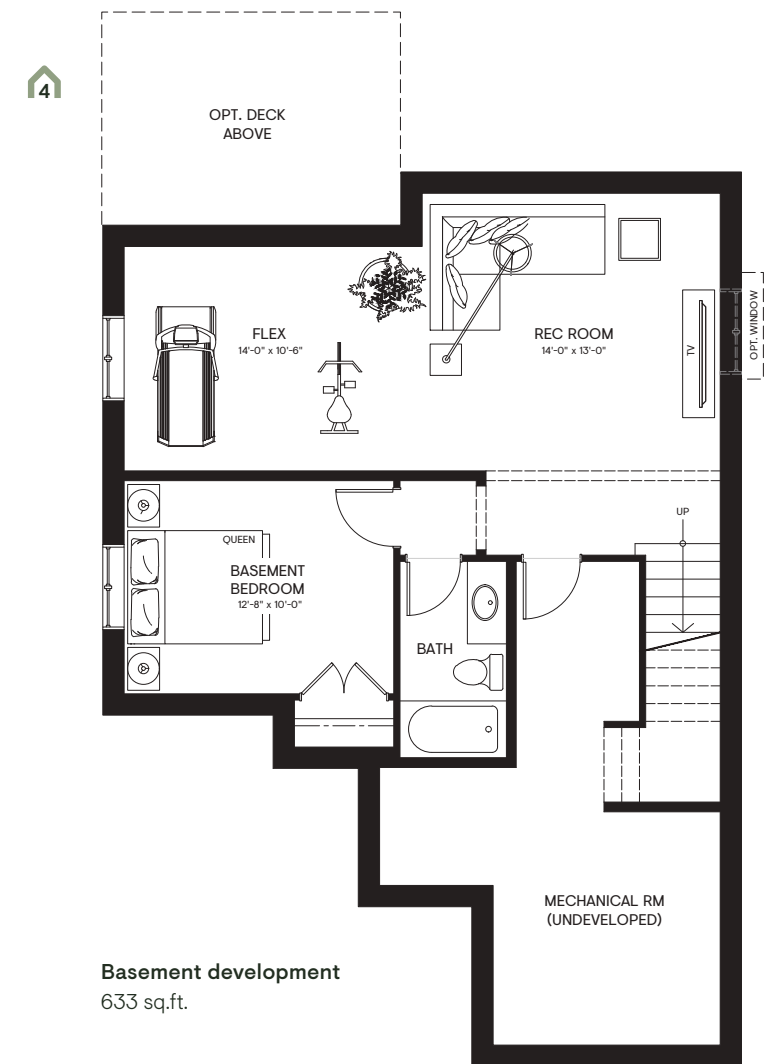
**Ensuite upgrade**



**4th Bedroom in lieu of bonus room**  
\*Note: If purchased w/ front balcony option, the access to the balcony will be from Bedroom 4



**Front balcony option**  
\*Only available with the Modern Farmhouse Elevation (C)



**Basement development**  
633 sq.ft.

The Developer reserves the right to make revisions if deemed appropriate in its sole discretion to all plans, dimensions, and specifications provided, including but not limited to window location and size. Actual usable floor space may vary from the stated floor area. The purchase price does not include any vehicles, accessories, or equipment shown. Renderings are artist's concepts only. Marketing floorplans reflect Traditional Farmhouse Elevation A (38SF3201) unless otherwise stated. This drawing contains information which is proprietary to and is the property of the Developer and may not be used, reproduced, or disclosed in any manner other than in relation to the purchase of a home within this project without the permission of the Developer. Pricing subject to change without notice. E. & O. E. Revised September 2023.



WILDFLOWER SERIES

# Lily 2

WILDFLOWER SERIES

# Lily 2



Rustic Farmhouse Elevation (B)  
2279 SQ.FT.



Modern Farmhouse Elevation (C)  
2279 SQ.FT.



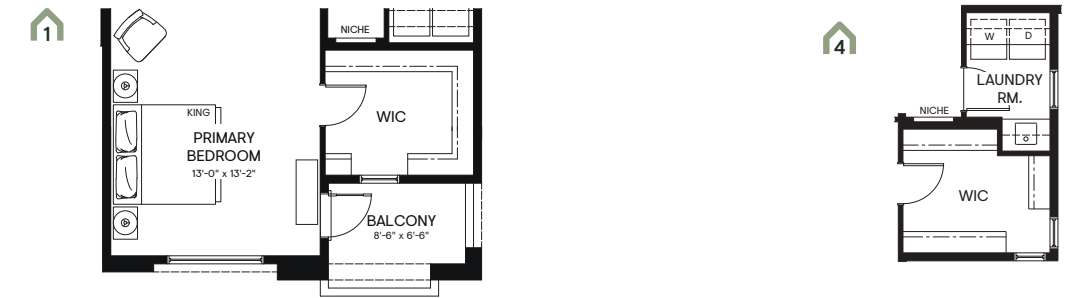
Traditional Farmhouse Elevation (A)  
2279 SQ.FT.

# Lily 2

2279 SQ.FT. | 3 Bedrooms | 2.5 Baths | Double Car Garage

## WILDFLOWER SERIES

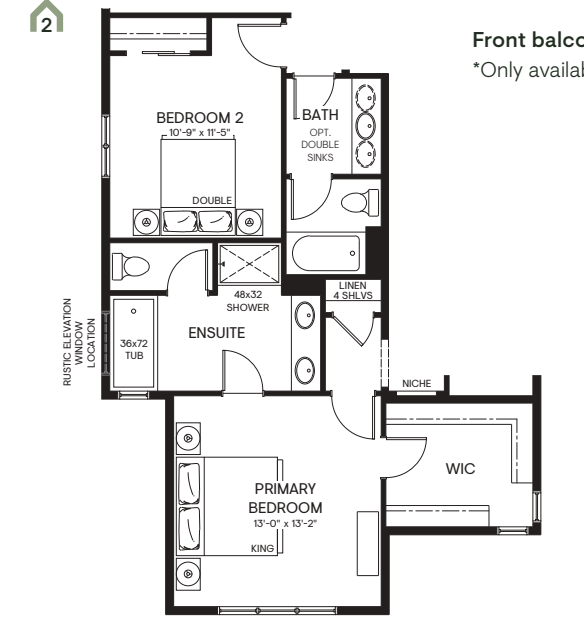
### FLEX OPTIONS



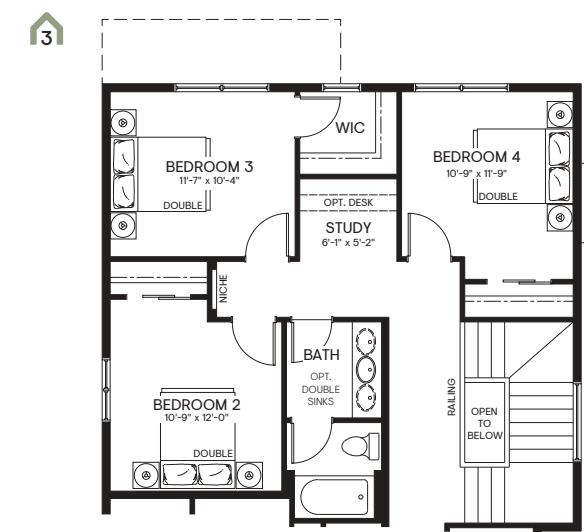
Front balcony option  
\*Only available with the Modern Farmhouse Elevation (C)



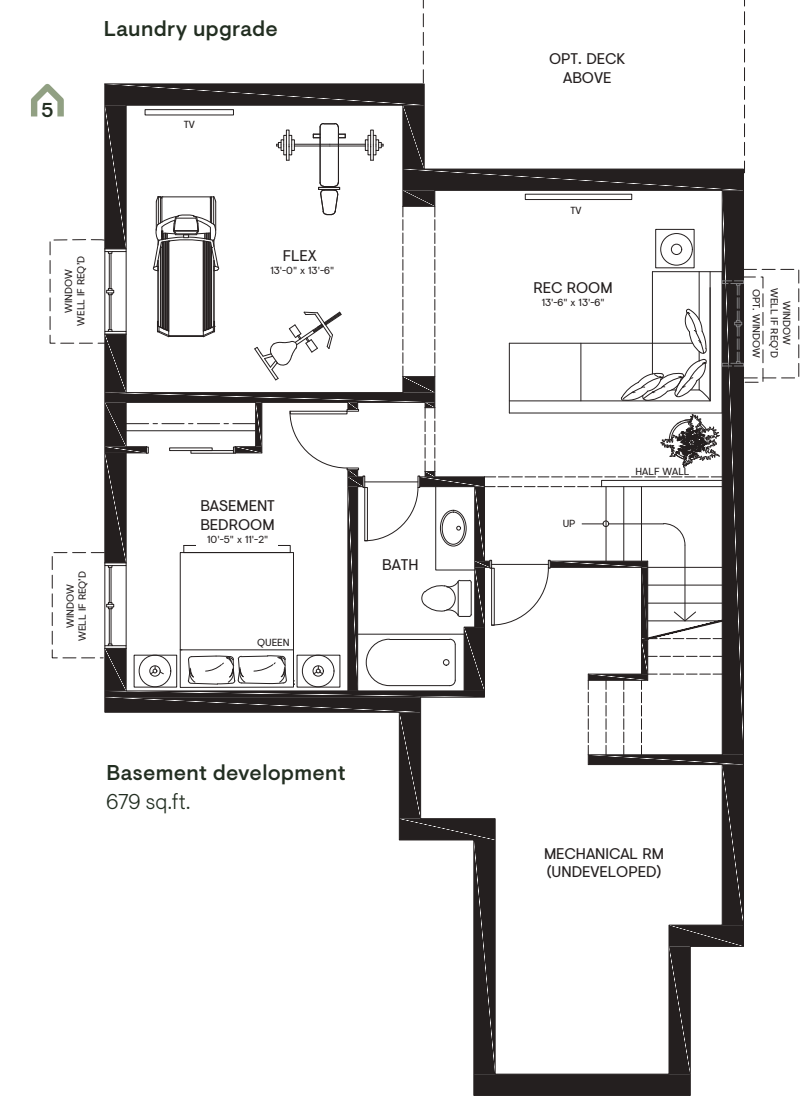
Main floor 1070 sq.ft. Upper floor 1209 sq.ft. Basement (undeveloped)



Ensuite upgrade



4th Bedroom option



Basement development 679 sq.ft.

The Developer reserves the right to make revisions if deemed appropriate in its sole discretion to all plans, dimensions, and specifications provided, including but not limited to window location and size. Actual usable floor space may vary from the stated floor area. The purchase price does not include any vehicles, accessories, or equipment shown. Renderings are artist's concepts only. Marketing floorplans reflect Traditional Farmhouse Elevation A (38SF3202) unless otherwise stated. This drawing contains information which is proprietary to and is the property of the Developer and may not be used, reproduced, or disclosed in any manner other than in relation to the purchase of a home within this project without the permission of the Developer. Pricing subject to change without notice. E. & O. E. Revised September 2023.



WILDFLOWER SERIES

# Lily 3

WILDFLOWER SERIES

# Lily 3



Rustic Farmhouse Elevation (B)  
2377 SQ.FT.



Modern Farmhouse Elevation (C)  
2377 SQ.FT.



Traditional Farmhouse Elevation (A)  
2377 SQ.FT.

# Lily 3

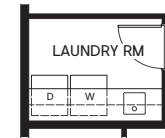
2377 SQ.FT. | 3 Bedrooms | 2.5 Baths | Double Car/Tandem Garage

## WILDFLOWER SERIES



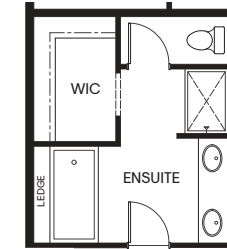
### FLEX OPTIONS

1



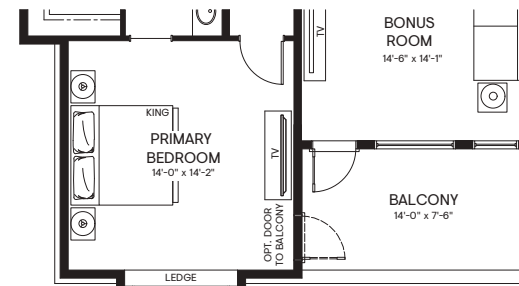
Laundry upgrade

2



Ensuite upgrade

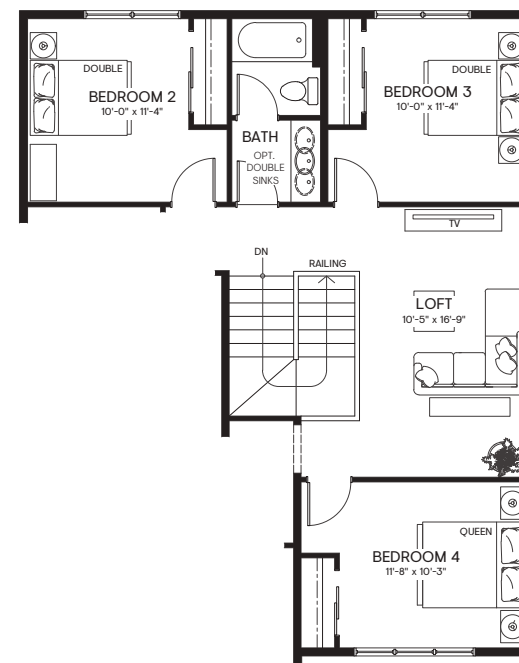
3



Front balcony option

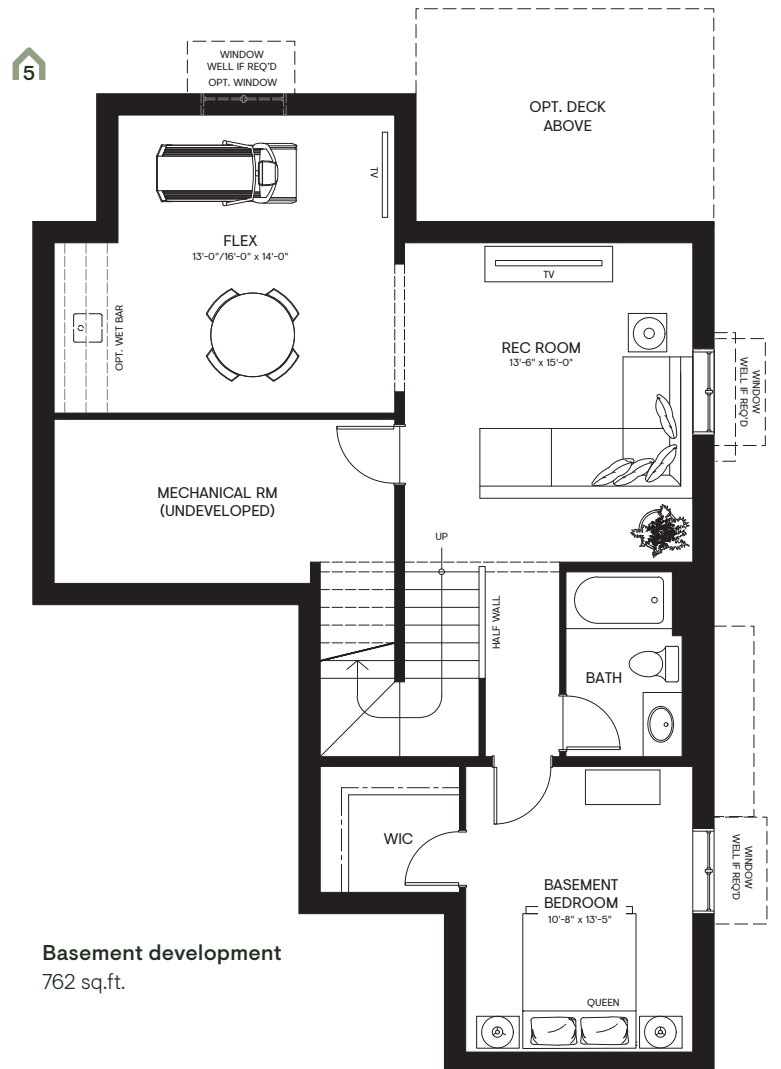
\*Only available with the Modern Farmhouse Elevation (C)  
\*Note: If purchased with 4th bedroom flex option, the access to balcony is from Bedroom 4

4



4th Bedroom w/ loft in lieu of bonus room

5



Basement development  
762 sq.ft.

The Developer reserves the right to make revisions if deemed appropriate in its sole discretion to all plans, dimensions, and specifications provided, including but not limited to window location and size. Actual usable floor space may vary from the stated floor area. The purchase price does not include any vehicles, accessories, or equipment shown. Renderings are artist's concepts only. Marketing floorplans reflect Traditional Farmhouse Elevation A (385F3203) unless otherwise stated. This drawing contains information which is proprietary to and is the property of the Developer and may not be used, reproduced, or disclosed in any manner other than in relation to the purchase of a home within this project without the permission of the Developer. Pricing subject to change without notice. E. & O. E. Revised September 2023.

WILDFLOWER SERIES

# Lily 4

WILDFLOWER SERIES

# Lily 4



Rustic Farmhouse Elevation (B)  
2449 SQ.FT.



Modern Farmhouse Elevation (C)  
2449 SQ.FT.

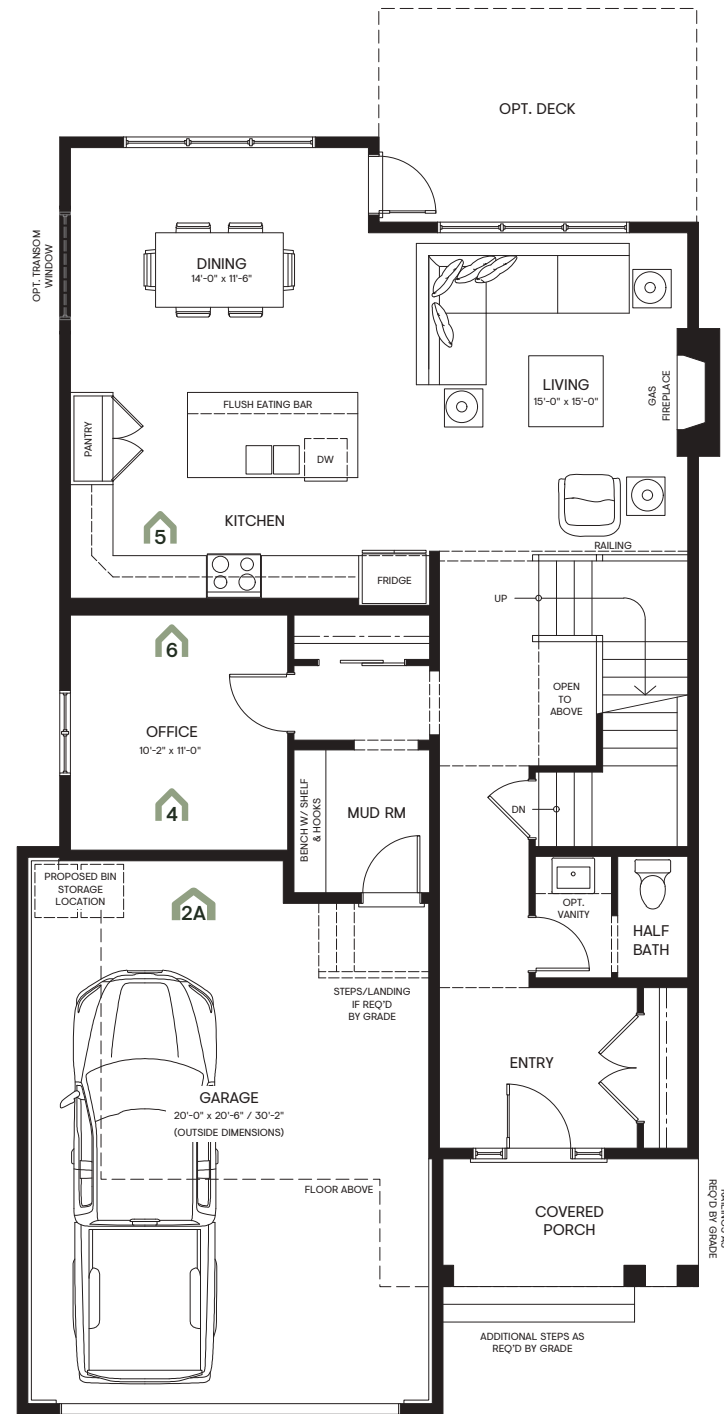


Traditional Farmhouse Elevation (A)  
2449 SQ.FT.

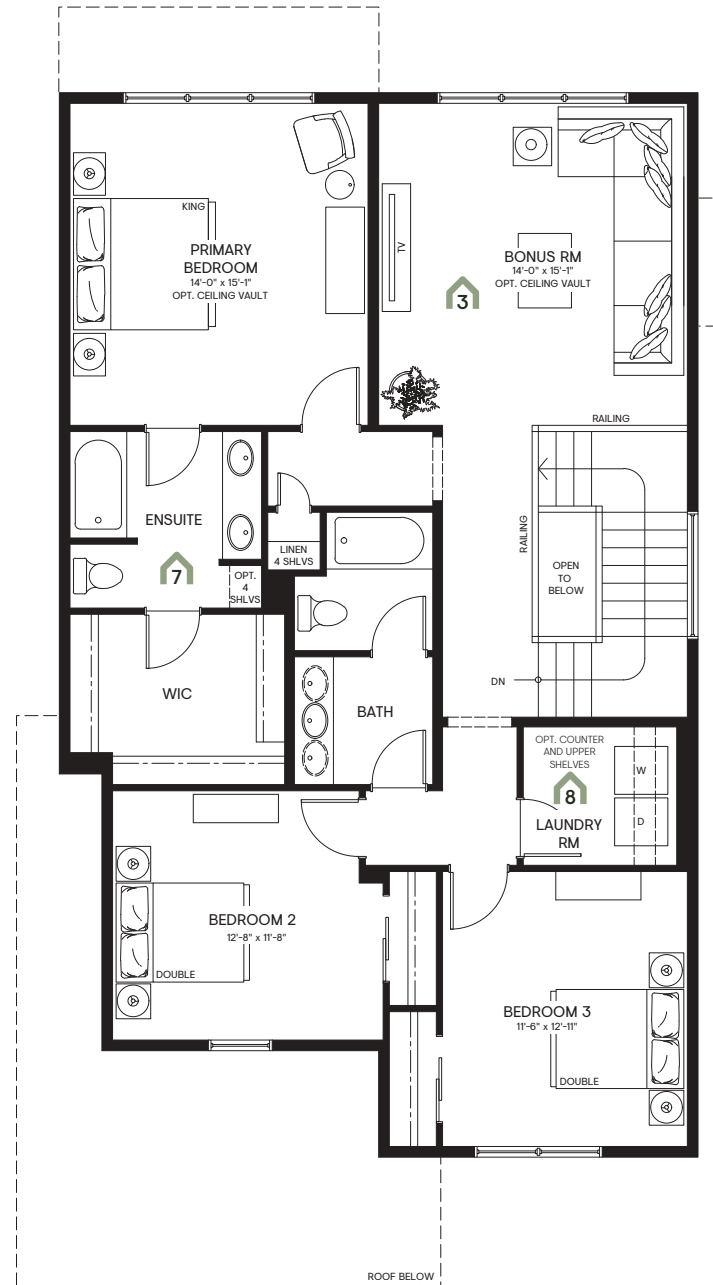
# Lily 4

2449 SQ.FT. | 3 Bedrooms | 2.5 Baths | Double Car Garage

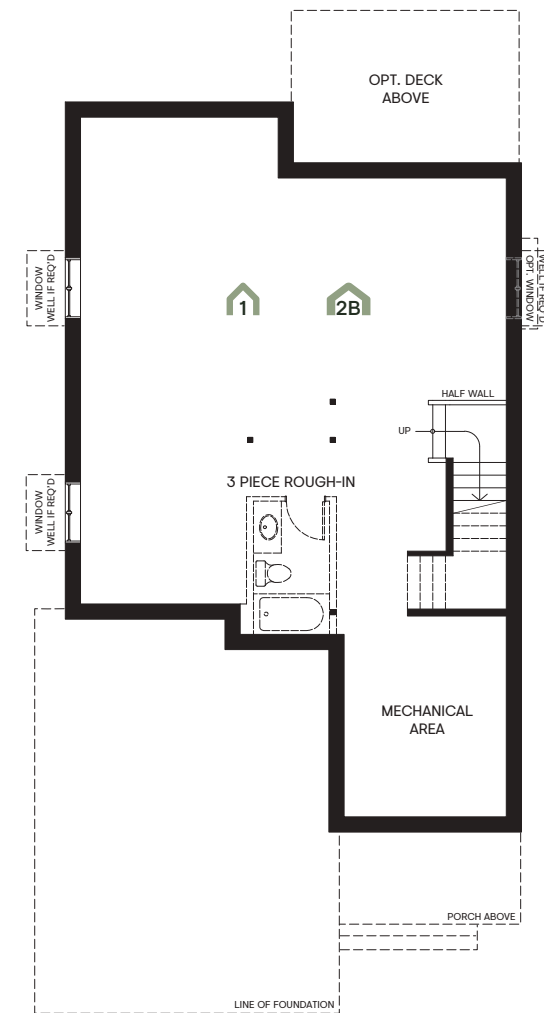
## WILDFLOWER SERIES



Main floor  
1151 sq.ft.

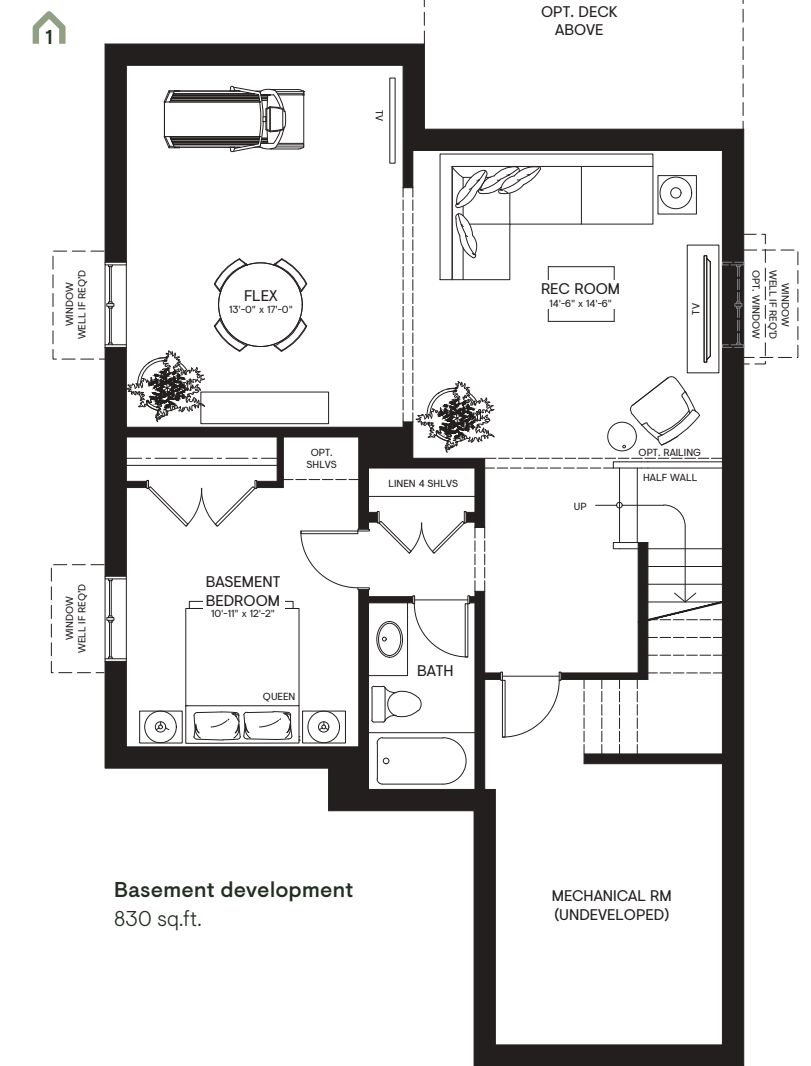


Upper floor  
1298 sq.ft.



Basement  
(undeveloped)

### FLEX OPTIONS



Basement development  
830 sq.ft.

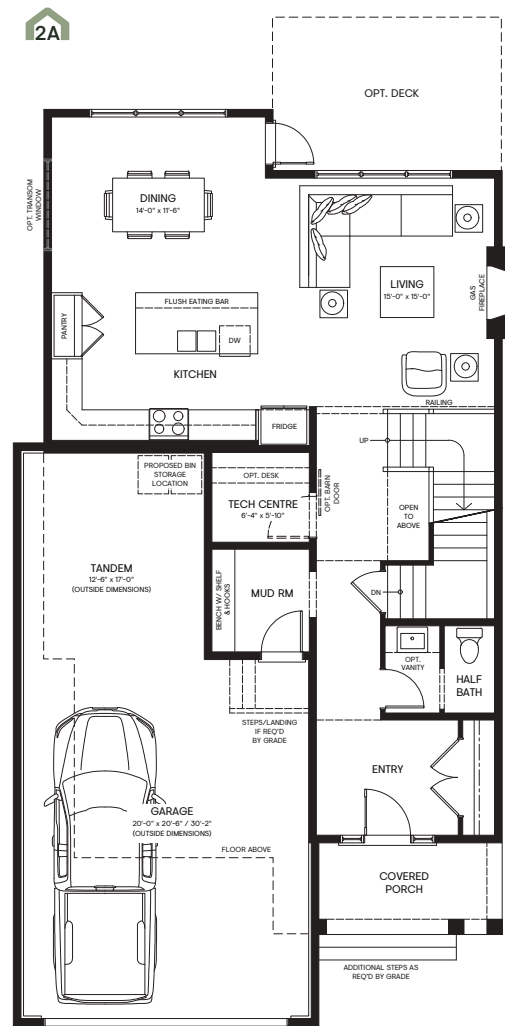
The Developer reserves the right to make revisions if deemed appropriate in its sole discretion to all plans, dimensions, and specifications provided, including but not limited to window location and size. Actual usable floor space may vary from the stated floor area. The purchase price does not include any vehicles, accessories, or equipment shown. Renderings are artist's concepts only. Marketing floorplans reflect Traditional Farmhouse Elevation A (38SF3204) unless otherwise stated. This drawing contains information which is proprietary to and is the property of the Developer and may not be used, reproduced, or disclosed in any manner other than in relation to the purchase of a home within this project without the permission of the Developer. Pricing subject to change without notice. E. & O. E. Revised September 2023.

# Lily 4

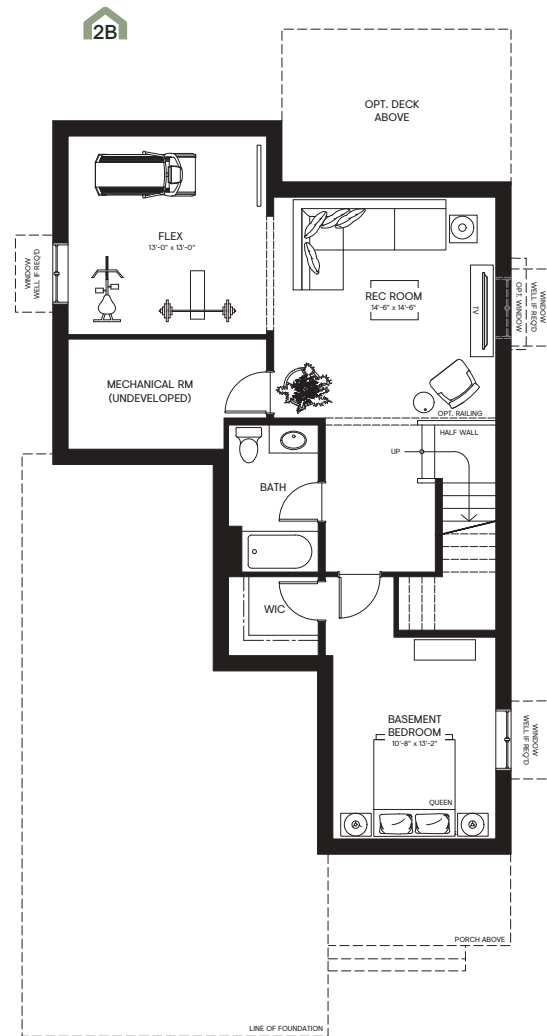
2449 SQ.FT. | 3 Bedrooms | 2.5 Baths | Double Car Garage

## WILDFLOWER SERIES

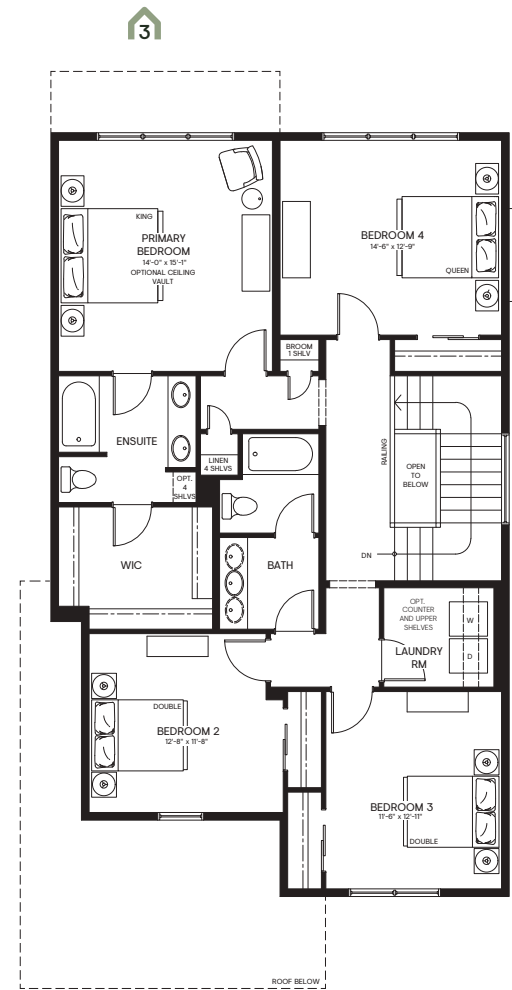
### FLEX OPTIONS CONTINUED



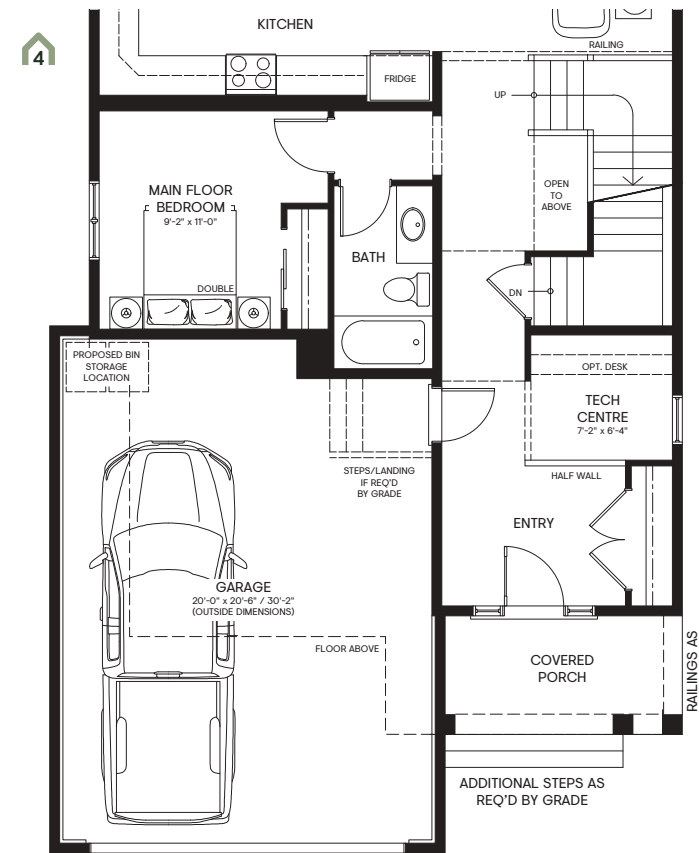
**Tandem garage**  
Reduces main floor by 121 sq.ft.  
\*Affects foundation & basement layout



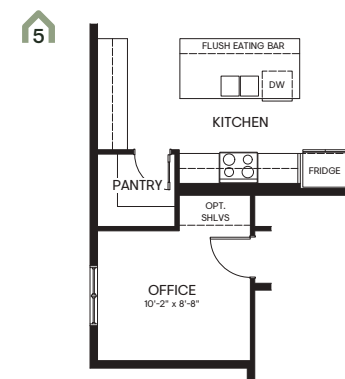
**Basement development w/ tandem garage**  
782 sq.ft.



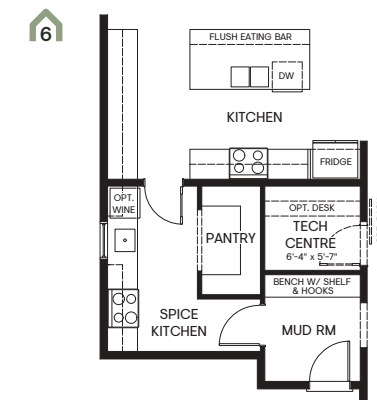
**4th bedroom option**



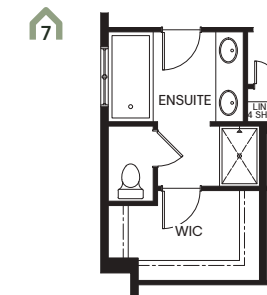
**Main floor bedroom w/ full bathroom & tech centre**  
\*Not available with Tandem Garage Flex plan



**Walk-in pantry in lieu of pantry cabinets**  
\*Not available with Tandem Garage Flex plan



**Spice kitchen w/ tech centre**  
\*Not available with Tandem Garage Flex plan



**Ensuite upgrade**



**Laundry Upgrade**

The Developer reserves the right to make revisions if deemed appropriate in its sole discretion to all plans, dimensions, and specifications provided, including but not limited to window location and size. Actual usable floor space may vary from the stated floor area. The purchase price does not include any vehicles, accessories, or equipment shown. Renderings are artist's concepts only. Marketing floorplans reflect Traditional Farmhouse Elevation A (38SF3204) unless otherwise stated. This drawing contains information which is proprietary to and is the property of the Developer and may not be used, reproduced, or disclosed in any manner other than in relation to the purchase of a home within this project without the permission of the Developer. Pricing subject to change without notice. E. & O. E. Revised September 2023.

WILDFLOWER SERIES

# Lily 5

WILDFLOWER SERIES

# Lily 5



Rustic Farmhouse Elevation (B)  
2586 SQ.FT.



Modern Farmhouse Elevation (C)  
2586 SQ.FT.



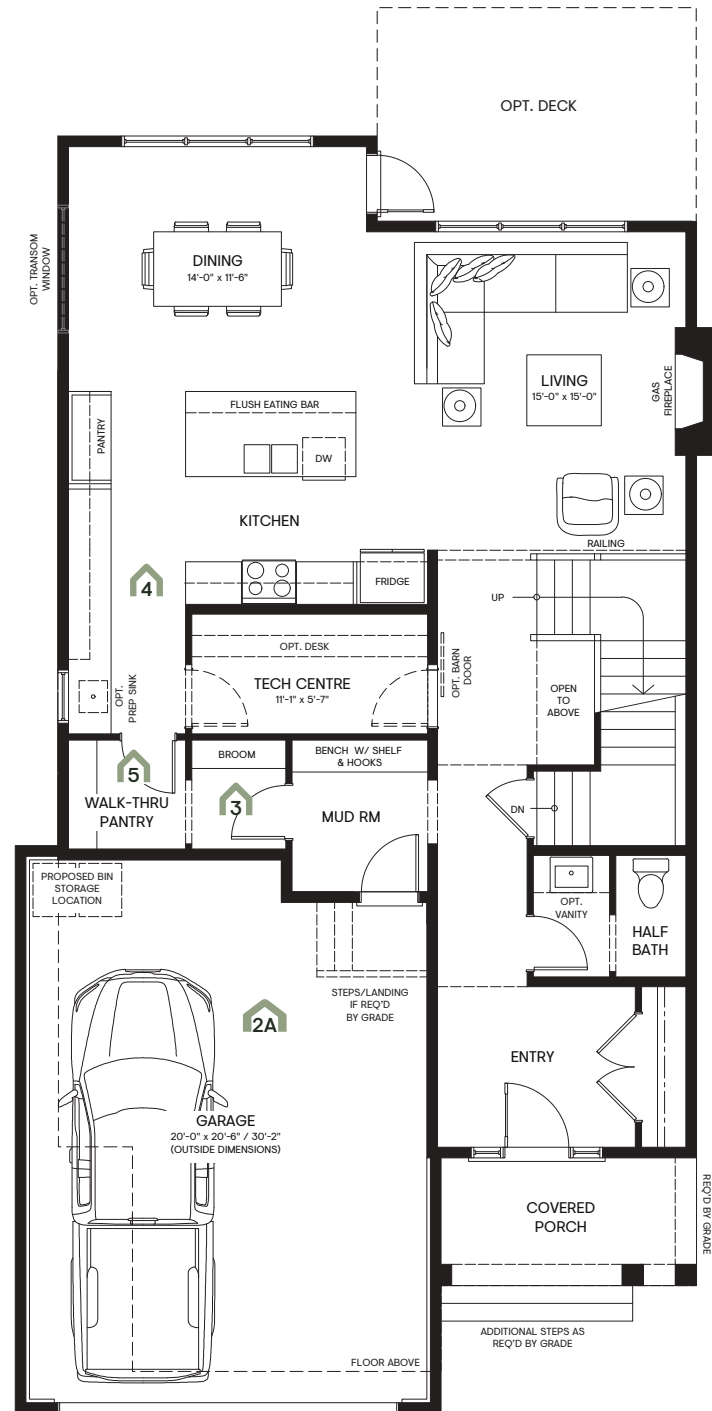
Traditional Farmhouse Elevation (A)  
2586 SQ.FT.



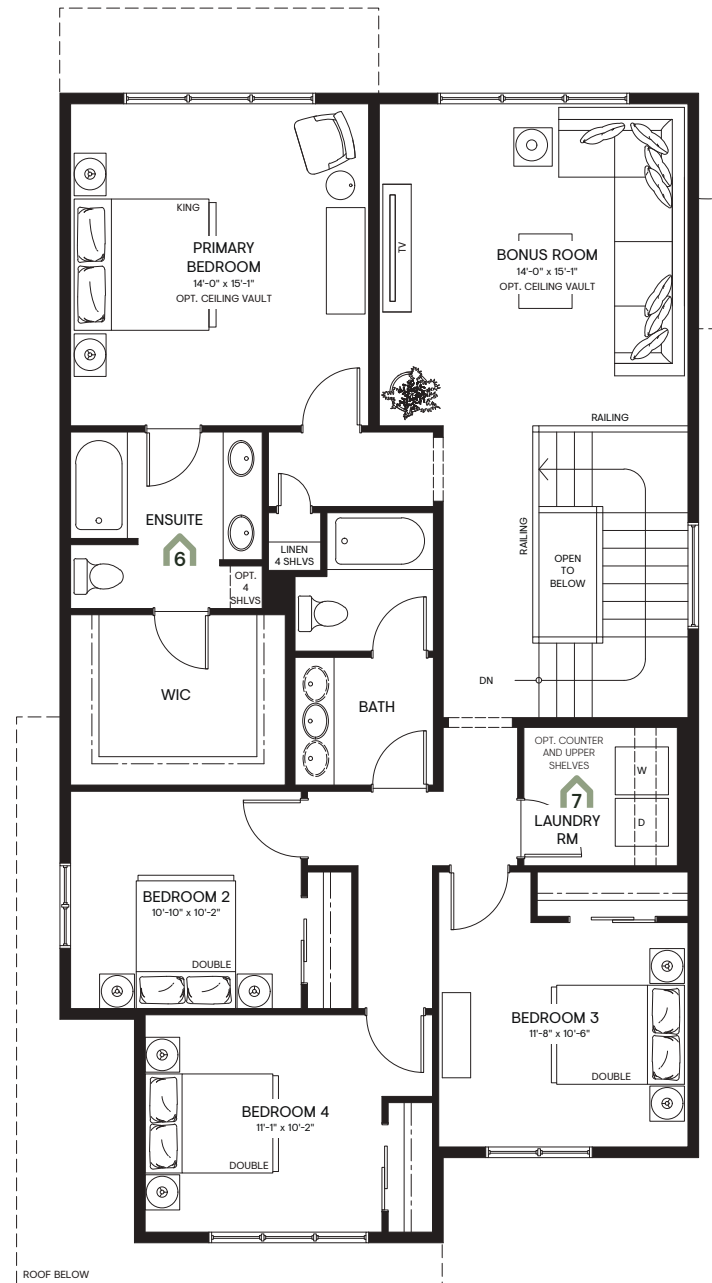
# Lily 5

2586 SQ.FT. | 4 Bedrooms | 2.5 Baths | Double Car Garage

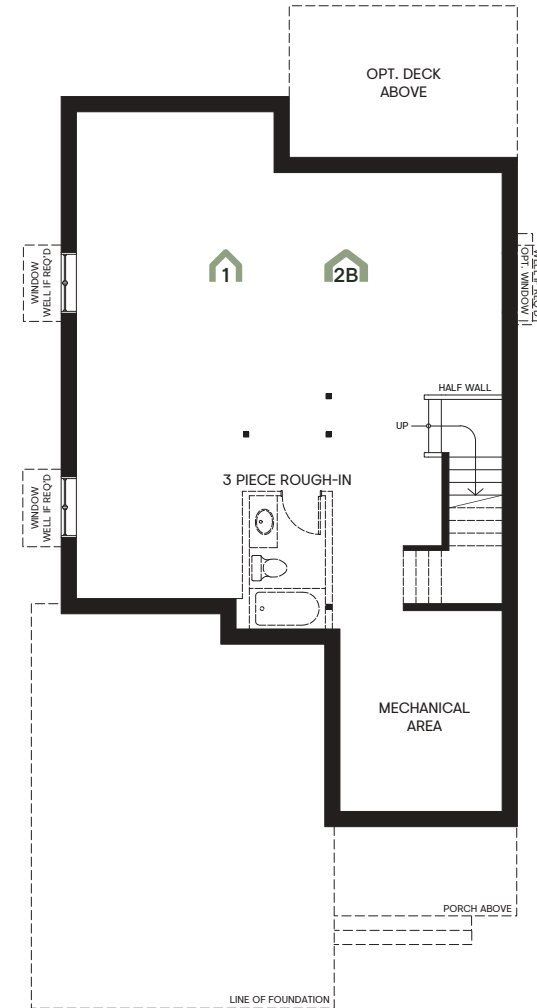
# WILDFLOWER SERIES



**Main floor**  
1151 sq.ft.

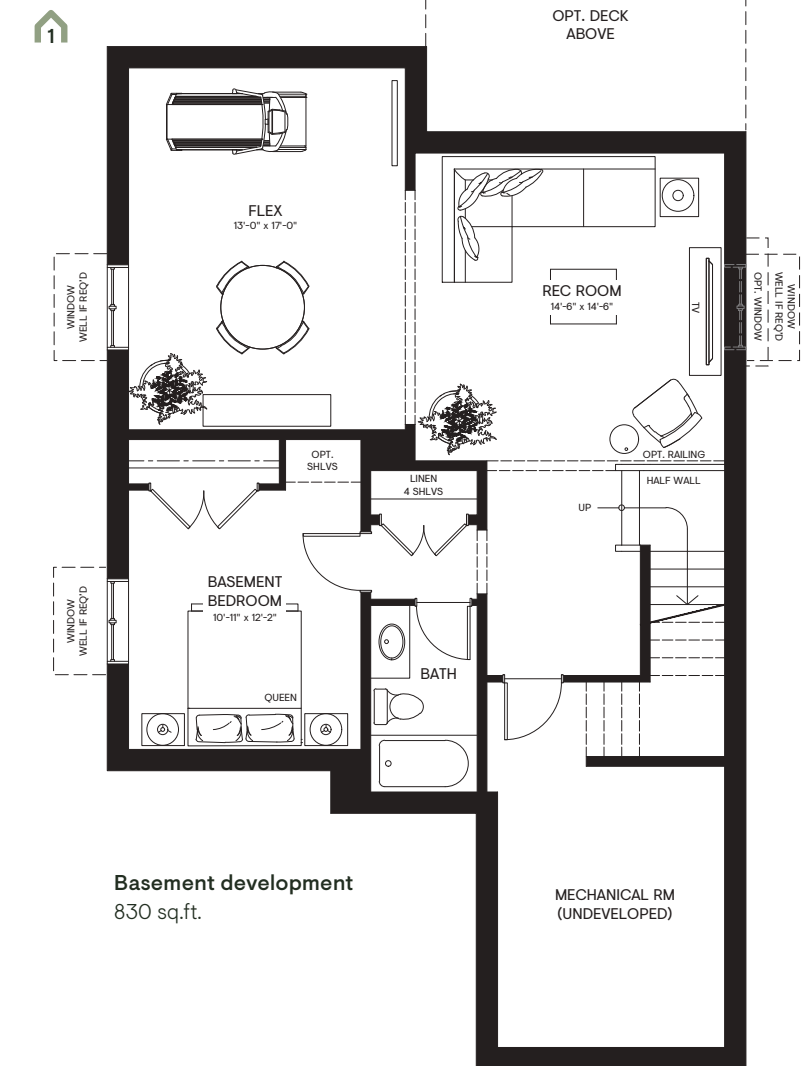


**Upper floor**  
1435 sq.ft.



**Basement**  
(undeveloped)

## FLEX OPTIONS



**Basement development**  
830 sq.ft.

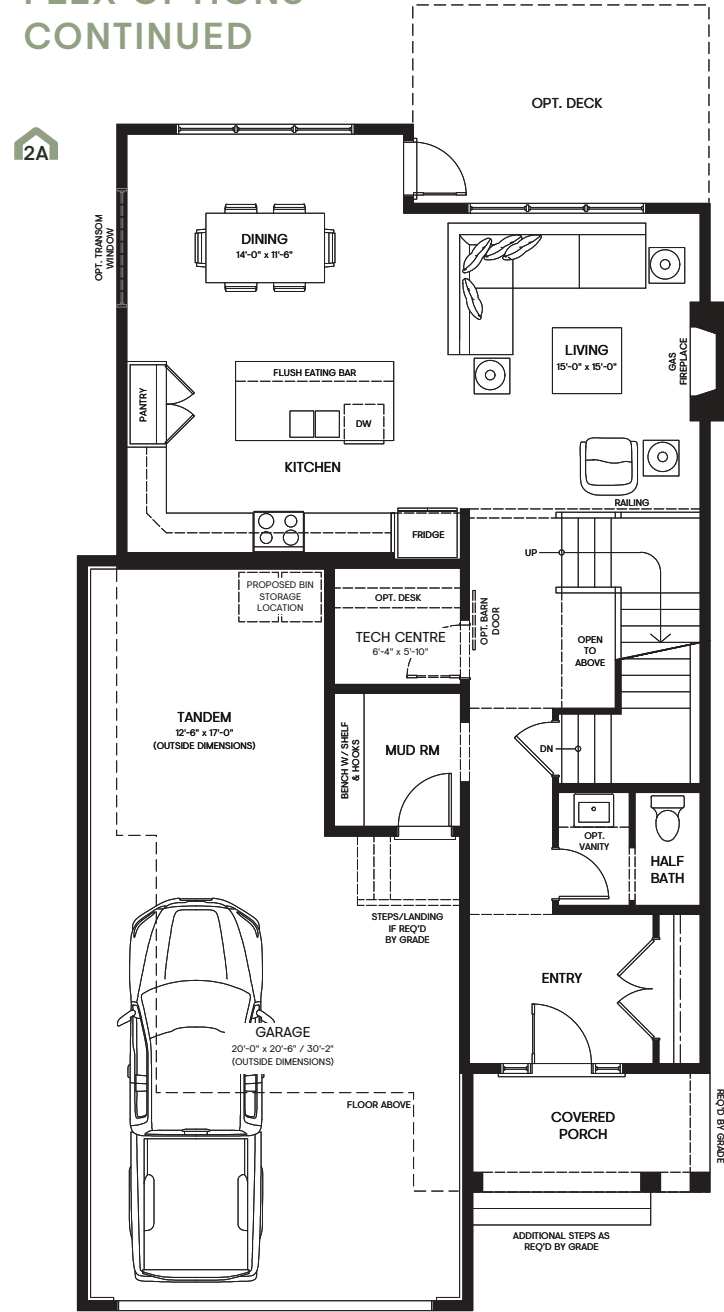
The Developer reserves the right to make revisions if deemed appropriate in its sole discretion to all plans, dimensions, and specifications provided, including but not limited to window location and size. Actual usable floor space may vary from the stated floor area. The purchase price does not include any vehicles, accessories, or equipment shown. Renderings are artist's concepts only. Marketing floorplans reflect Traditional Farmhouse Elevation A (385F3205) unless otherwise stated. This drawing contains information which is proprietary to and is the property of the Developer and may not be used, reproduced, or disclosed in any manner other than in relation to the purchase of a home within this project without the permission of the Developer. Pricing subject to change without notice. E. & O. E. Revised September 2023.

# Lily 5

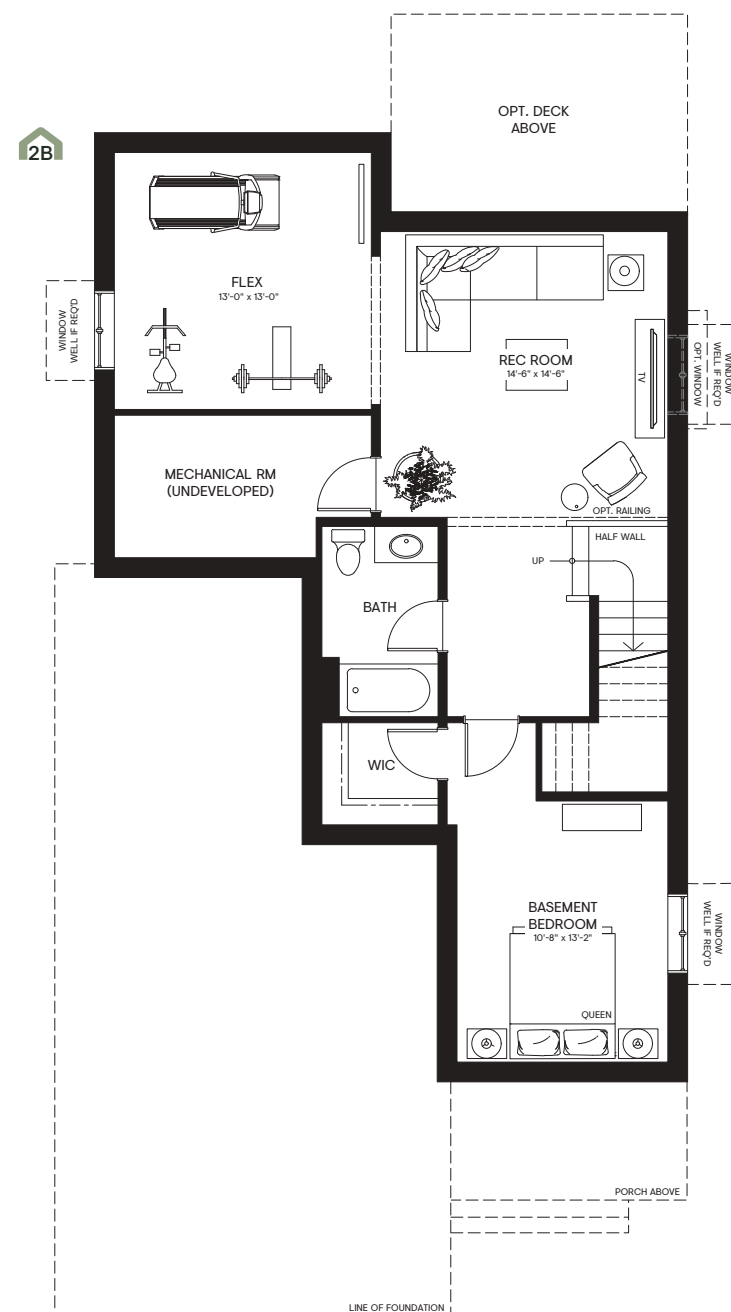
2586 SQ.FT. | 4 Bedrooms | 2.5 Baths | Double Car Garage

# WILDFLOWER SERIES

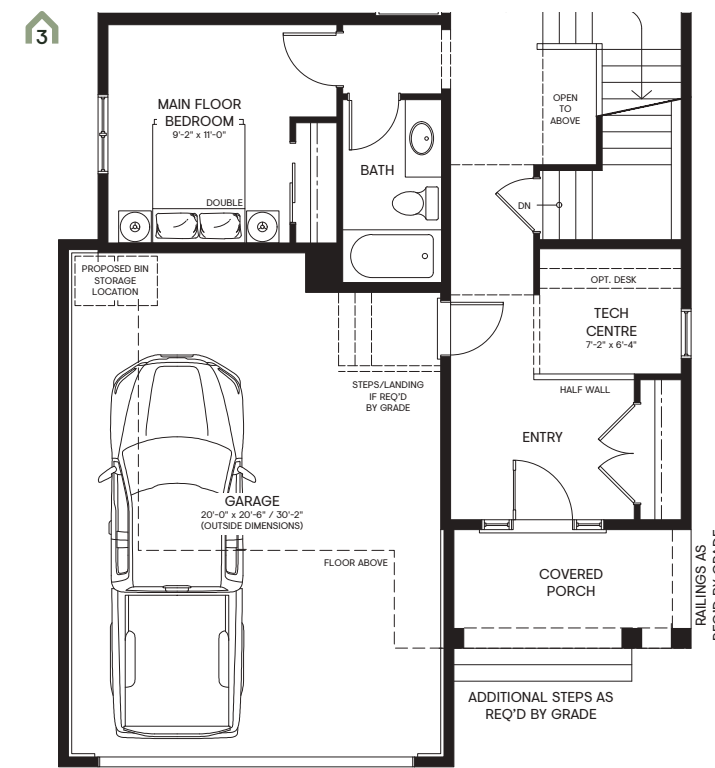
## FLEX OPTIONS CONTINUED



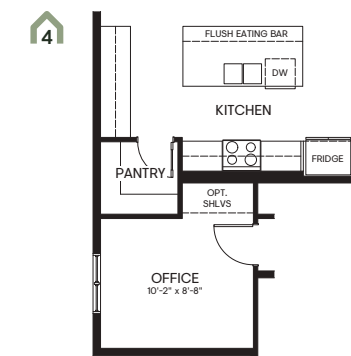
**Tandem garage**  
Reduces main floor by 121 sq.ft.  
\*Affects foundation & basement layout



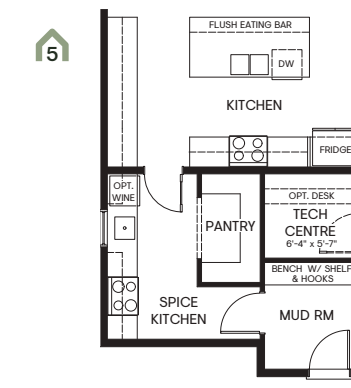
**Basement development w/ tandem garage**  
782 sq.ft.



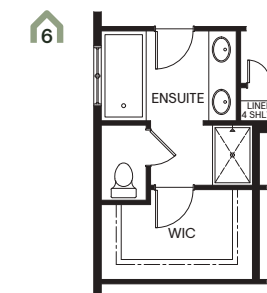
**Main floor bedroom w/ full bedroom & tech centre**  
\*Not available with Tandem Garage Flex plan



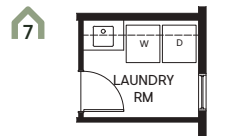
**Walk-in pantry in lieu of pantry cabinets**  
\*Not available with Tandem Garage Flex plan



**Spice kitchen w/ tech centre**  
\*Not available with Tandem Garage Flex plan



**Ensuite upgrade**



**Laundry upgrade**

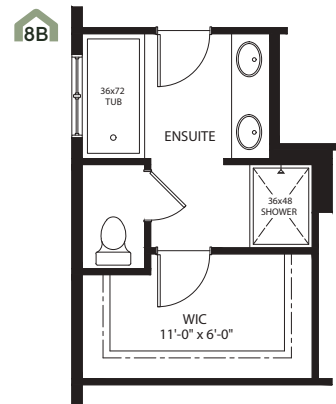
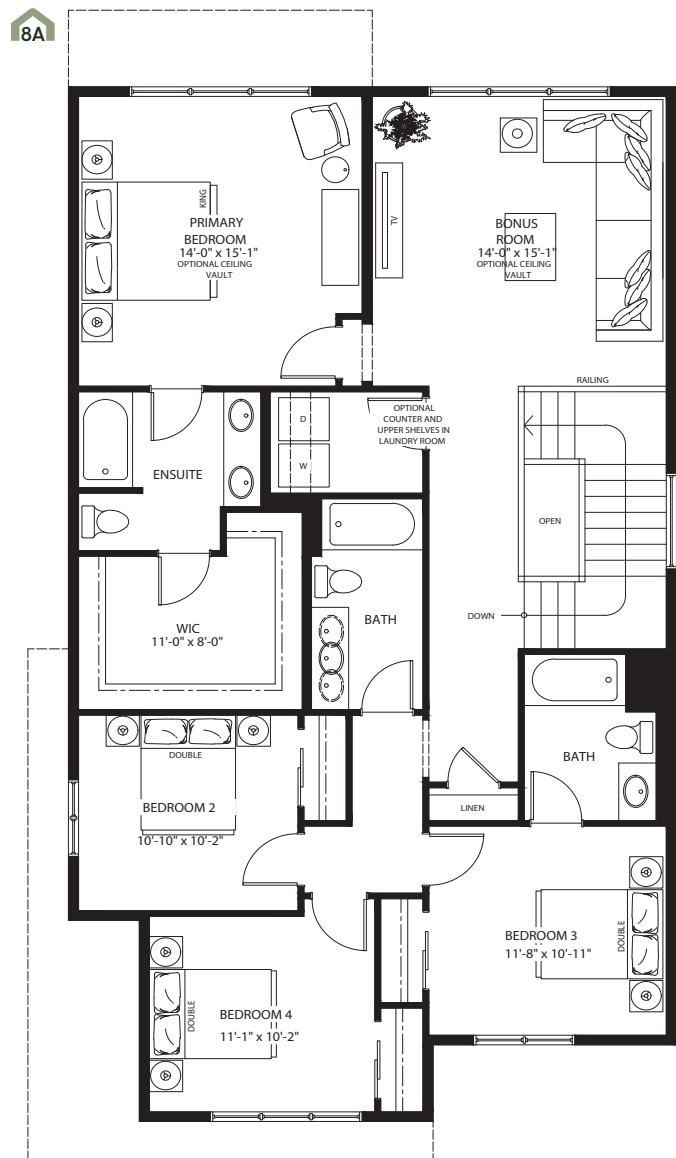
The Developer reserves the right to make revisions if deemed appropriate in its sole discretion to all plans, dimensions, and specifications provided, including but not limited to window location and size. Actual usable floor space may vary from the stated floor area. The purchase price does not include any vehicles, accessories, or equipment shown. Renderings are artist's concepts only. Marketing floorplans reflect Traditional Farmhouse Elevation A (385F3205) unless otherwise stated. This drawing contains information which is proprietary to and is the property of the Developer and may not be used, reproduced, or disclosed in any manner other than in relation to the purchase of a home within this project without the permission of the Developer. Pricing subject to change without notice. E. & O. E. Revised September 2023.

# Lily 5

## WILDFLOWER SERIES

2586 SQ.FT. | 4 Bedrooms | 2.5 Baths | Double Car Garage

### FLEX OPTIONS CONTINUED



Ensuite upgrade  
w/ alternate upper floor

Alternate upper floor w/ 2nd bathroom  
1435 sq.ft.

The Developer reserves the right to make revisions if deemed appropriate in its sole discretion to all plans, dimensions, and specifications provided, including but not limited to window location and size. Actual usable floor space may vary from the stated floor area. The purchase price does not include any vehicles, accessories, or equipment shown. Renderings are artist's concepts only. Marketing floorplans reflect Traditional Farmhouse Elevation A (38SF3205) unless otherwise stated. This drawing contains information which is proprietary to and is the property of the Developer and may not be used, reproduced, or disclosed in any manner other than in relation to the purchase of a home within this project without the permission of the Developer. Pricing subject to change without notice. E. & O. E. Revised September 2023.

WILDFLOWER SERIES

# Lily 6



Rustic Farmhouse Elevation (B)  
1236 SQ.FT.

WILDFLOWER SERIES

# Lily 6



Traditional Farmhouse Elevation (A)  
1236 SQ.FT.

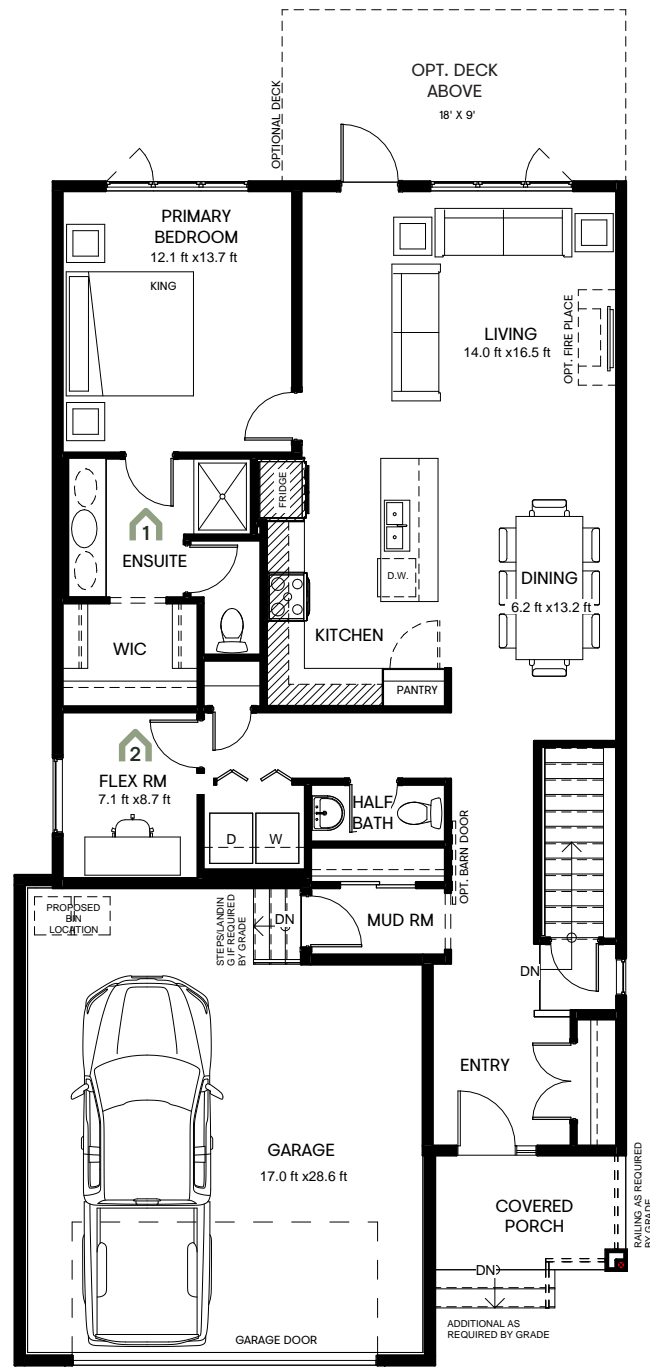


wildflower

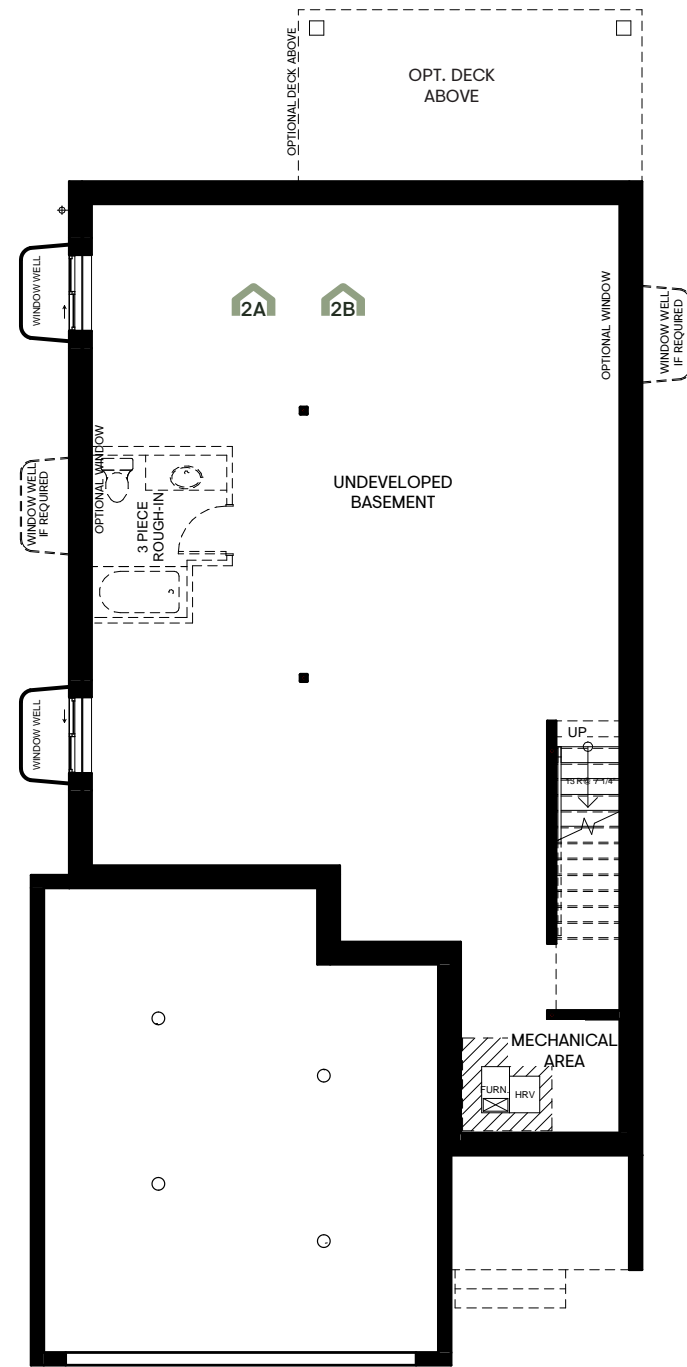
# Lily 6

1236 SQ.FT. | 1 Bedroom + Flex Room | 1.5 Baths | Double Car Garage

# WILDFLOWER SERIES

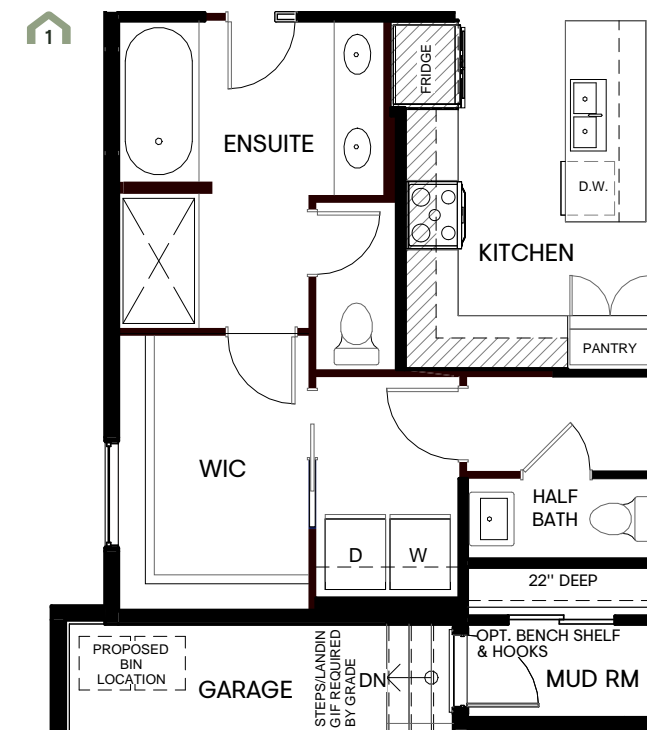


Main floor  
1247 sq.ft.

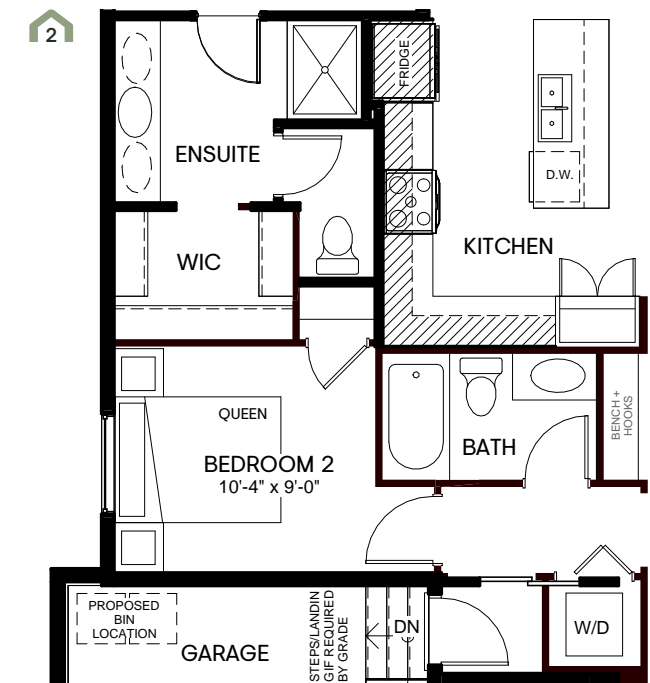


Basement  
(undeveloped)

## FLEX OPTIONS



Ensuite upgrade in lieu of flex room  
1247 sq.ft.



Alternate main floor w/ 2 bedrooms & 2 bathrooms  
1247 sq.ft.

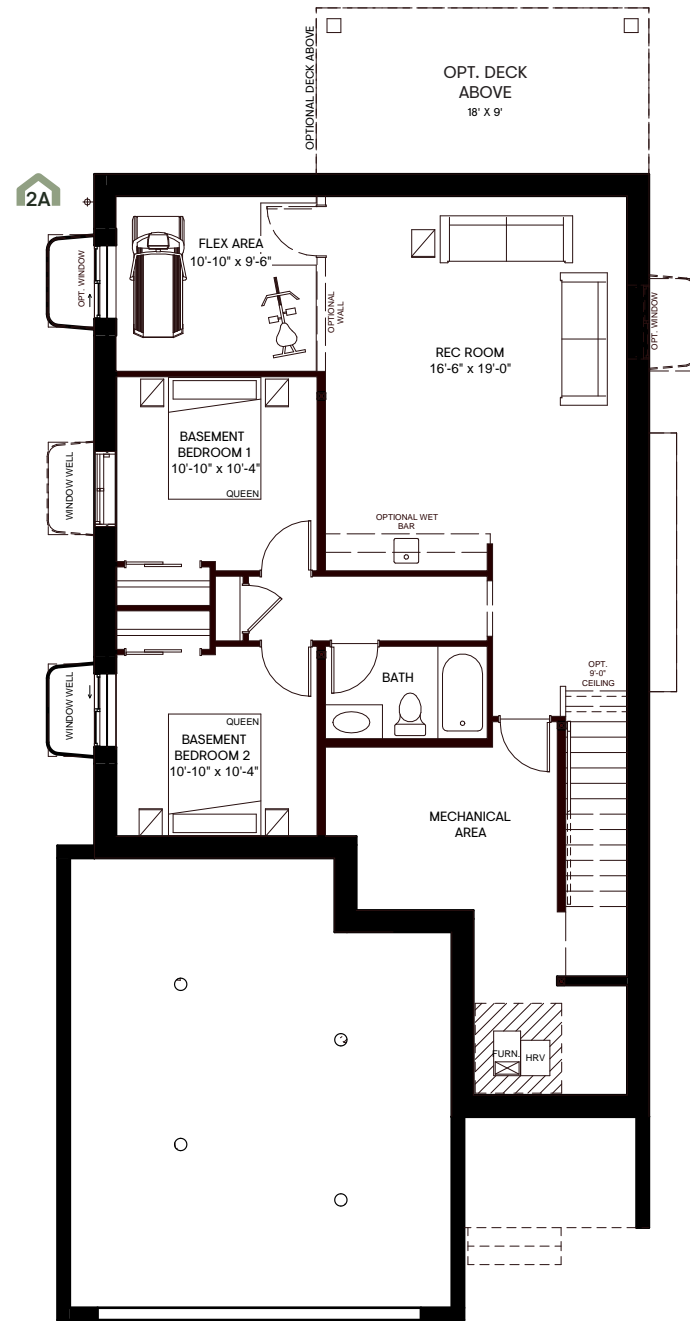
The Developer reserves the right to make revisions if deemed appropriate in its sole discretion to all plans, dimensions, and specifications provided, including but not limited to window location and size. Actual usable floor space may vary from the stated floor area. The purchase price does not include any vehicles, accessories, or equipment shown. Renderings are artist's concepts only. Marketing floorplans reflect Traditional Farmhouse Elevation A (3BSF3206) unless otherwise stated. This drawing contains information which is proprietary to and is the property of the Developer and may not be used, reproduced, or disclosed in any manner other than in relation to the purchase of a home within this project without the permission of the Developer. Pricing subject to change without notice. E. & O. E. Revised September 2023.

# Lily 6

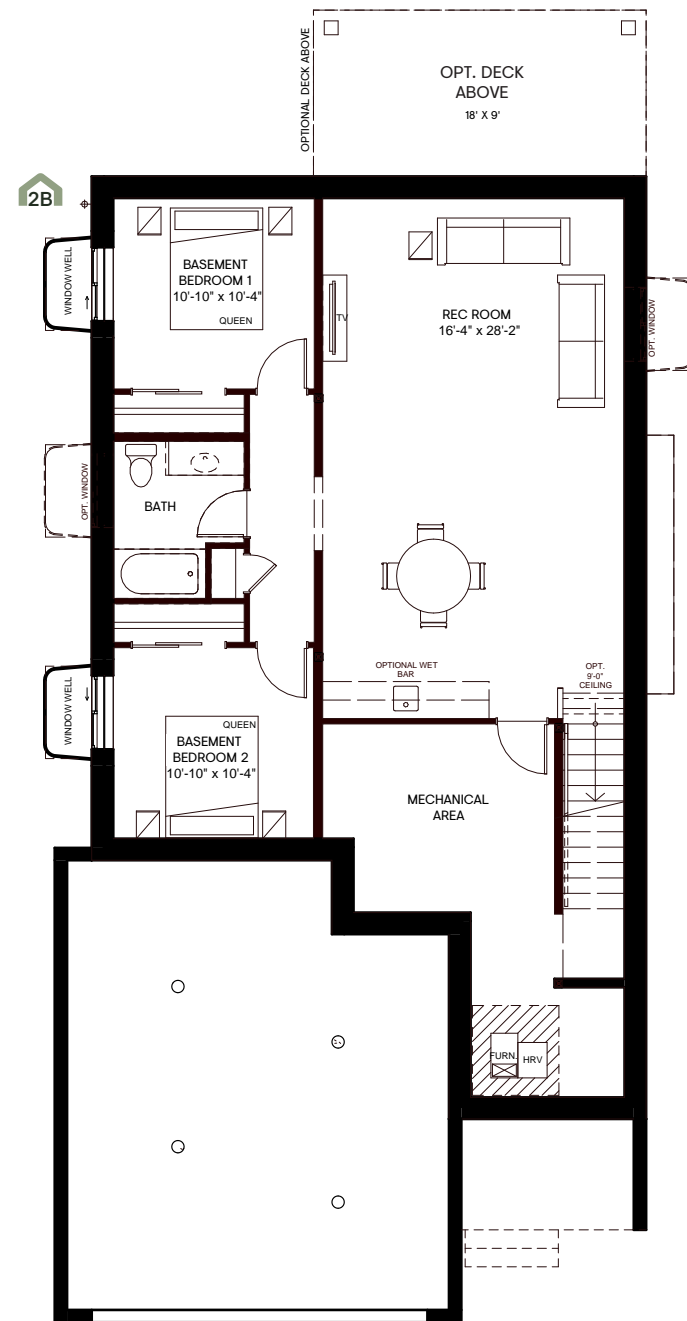
# WILDFLOWER SERIES

1236 SQ.FT. | 1 Bedroom + Flex Room | 1.5 Baths | Double Car Garage

## FLEX OPTIONS CONTINUED



Basement development w/ 2 bedrooms & flex  
916 sq.ft.



Basement development w/ 2 bedrooms  
916 sq.ft.

The Developer reserves the right to make revisions if deemed appropriate in its sole discretion to all plans, dimensions, and specifications provided, including but not limited to window location and size. Actual usable floor space may vary from the stated floor area. The purchase price does not include any vehicles, accessories, or equipment shown. Renderings are artist's concepts only. Marketing floorplans reflect Traditional Farmhouse Elevation A (385F3206) unless otherwise stated. This drawing contains information which is proprietary to and is the property of the Developer and may not be used, reproduced, or disclosed in any manner other than in relation to the purchase of a home within this project without the permission of the Developer. Pricing subject to change without notice. E. & O. E. Revised September 2023.

WILDFLOWER SERIES

# Daisy 1

WILDFLOWER SERIES

# Daisy 1



Rustic Farmhouse Elevation (B)  
1445 SQ.FT.



Modern Farmhouse Elevation (C)  
1445 SQ.FT.

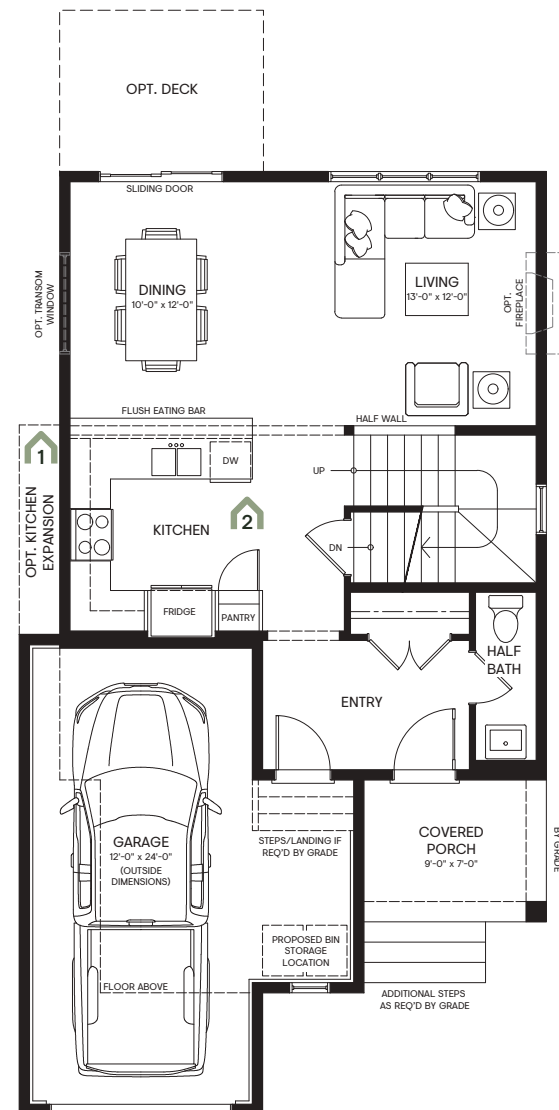


Traditional Farmhouse Elevation (A)  
1445 SQ.FT.

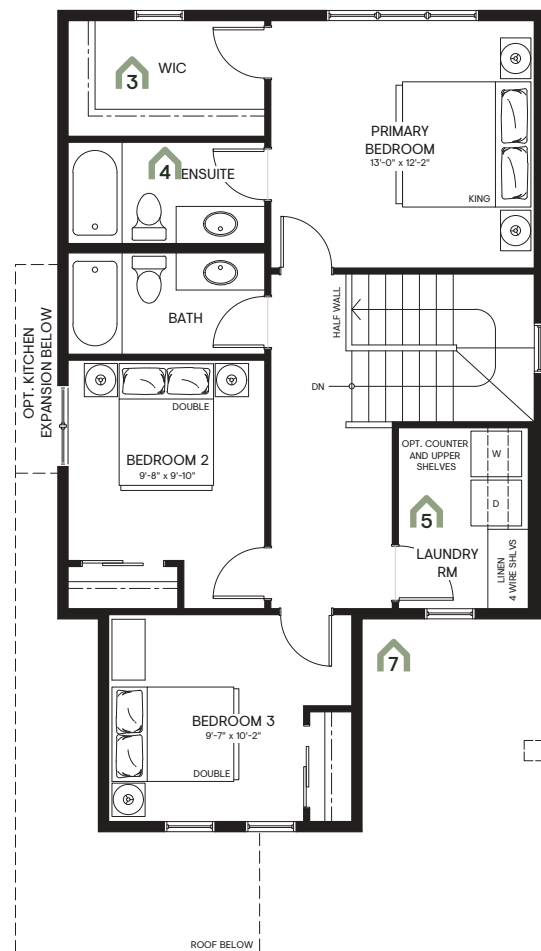
# Daisy 1

1445 SQ.FT. | 3 Bedrooms | 2.5 Baths | Single Car Garage

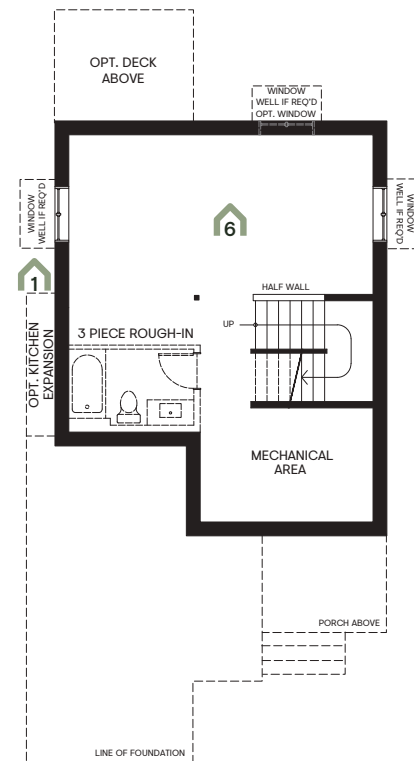
## WILDFLOWER SERIES



Main floor  
658 sq.ft.



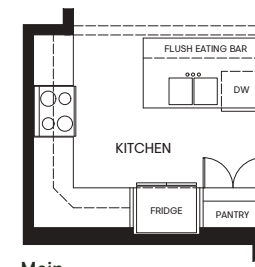
Upper floor  
787 sq.ft.



Basement  
(undeveloped)

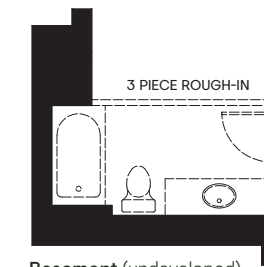
### FLEX OPTIONS

1



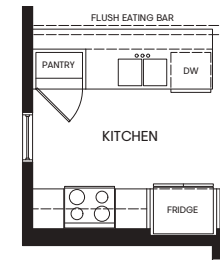
Main

Kitchen expansion (adds 22 sq.ft.)  
\*Affects foundation



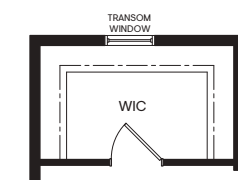
Basement (undeveloped)

2



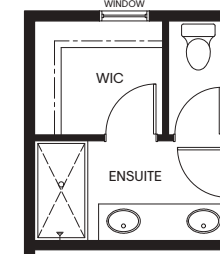
Alternate kitchen layout

3



Alternate closet entrance  
from ensuite  
\*Only available with the base  
plan

4



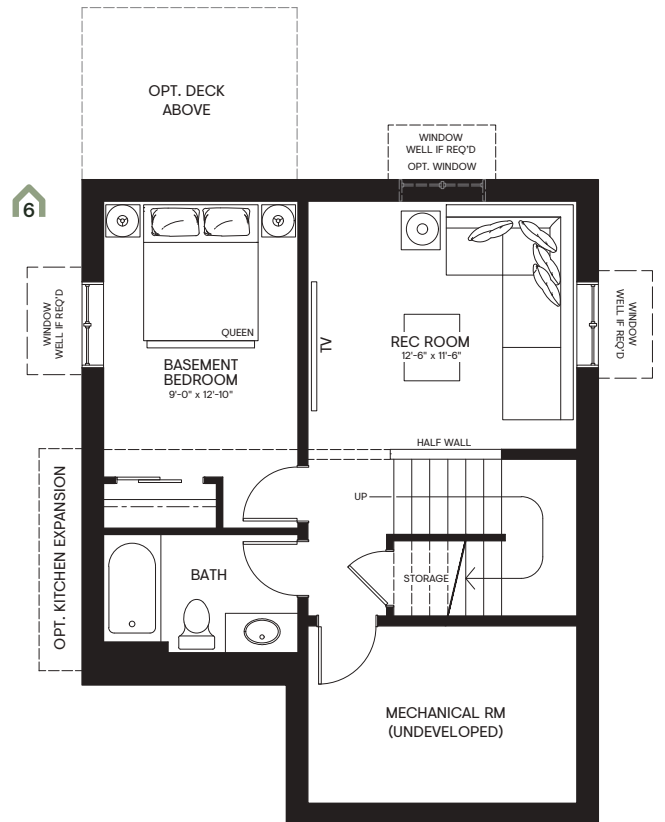
Ensuite upgrade

5



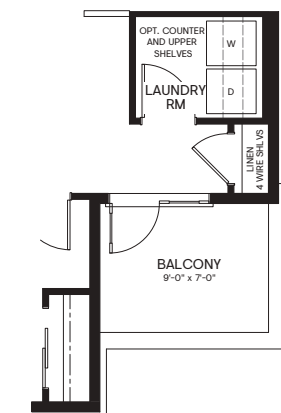
Laundry upgrade  
\*Only available with the  
Traditional and Rustic  
Farmhouse Elevations (A & B)

6



Basement development  
438 sq.ft.

7



Front balcony option  
\*Only available with the  
Modern Farmhouse Elevation (C)

The Developer reserves the right to make revisions if deemed appropriate in its sole discretion to all plans, dimensions, and specifications provided, including but not limited to window location and size. Actual usable floor space may vary from the stated floor area. The purchase price does not include any vehicles, accessories, or equipment shown. Renderings are artist's concepts only. Marketing floorplans reflect Traditional Farmhouse Elevation A (32SF2601) unless otherwise stated. This drawing contains information which is proprietary to and is the property of the Developer and may not be used, reproduced, or disclosed in any manner other than in relation to the purchase of a home within this project without the permission of the Developer. Pricing subject to change without notice. E. & O. E. Revised September 2023.



WILDFLOWER SERIES  
Daisy 2

WILDFLOWER SERIES  
Daisy 2



Rustic Farmhouse Elevation (B)  
1575 SQ.FT.



Modern Farmhouse Elevation (C)  
1575 SQ.FT.

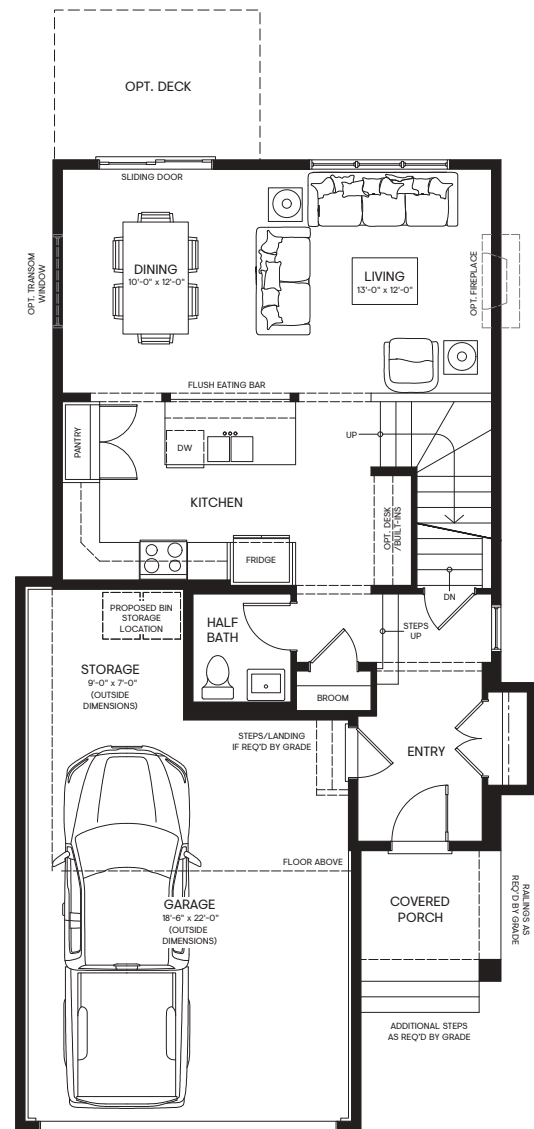


Traditional Farmhouse Elevation (A)  
1575 SQ.FT.

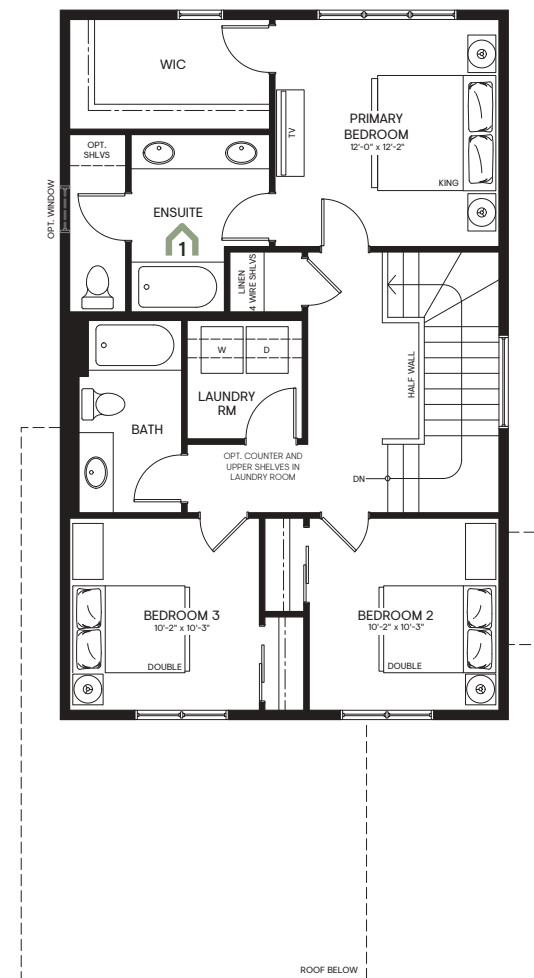
# Daisy 2

WILDFLOWER SERIES

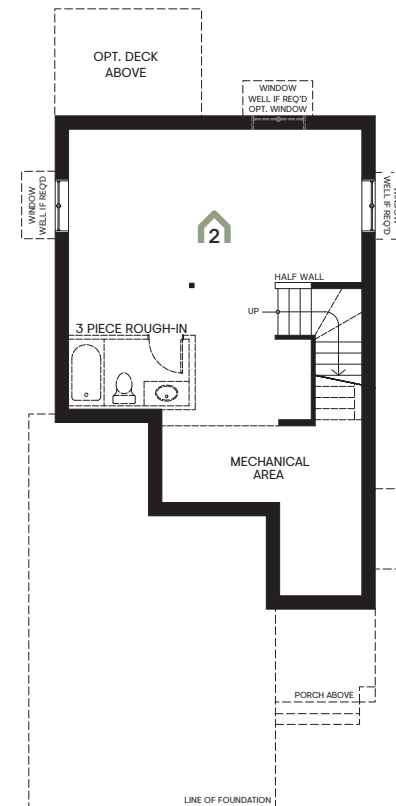
1575 SQ.FT. | 3 Bedrooms | 2.5 Baths | Double Car Garage



Main floor  
740 sq.ft.

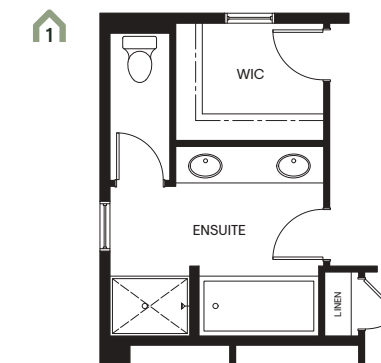


Upper floor  
835 sq.ft.

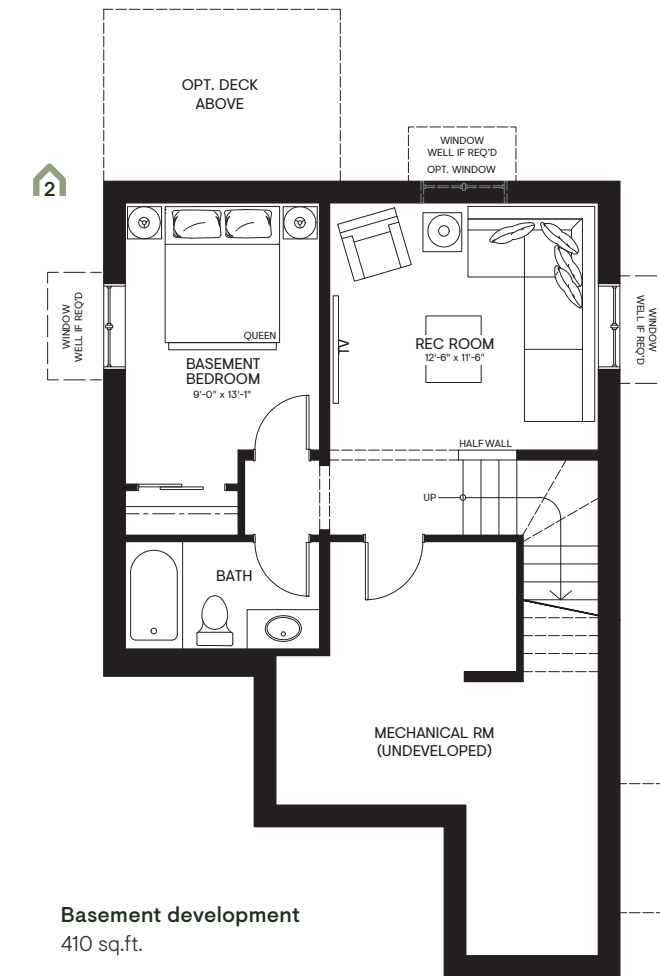


Basement  
(undeveloped)

## FLEX OPTIONS



Ensuite upgrade



Basement development  
410 sq.ft.

The Developer reserves the right to make revisions if deemed appropriate in its sole discretion to all plans, dimensions, and specifications provided, including but not limited to window location and size. Actual usable floor space may vary from the stated floor area. The purchase price does not include any vehicles, accessories, or equipment shown. Renderings are artist's concepts only. Marketing floorplans reflect Traditional Farmhouse Elevation A (325F2602) unless otherwise stated. This drawing contains information which is proprietary to and is the property of the Developer and may not be used, reproduced, or disclosed in any manner other than in relation to the purchase of a home within this project without the permission of the Developer. Pricing subject to change without notice. E. & O. E. Revised September 2023.

WILDFLOWER SERIES  
Daisy 3

WILDFLOWER SERIES  
Daisy 3



Rustic Farmhouse Elevation (B)  
1777 SQ.FT.



Modern Farmhouse Elevation (C)  
1777 SQ.FT.

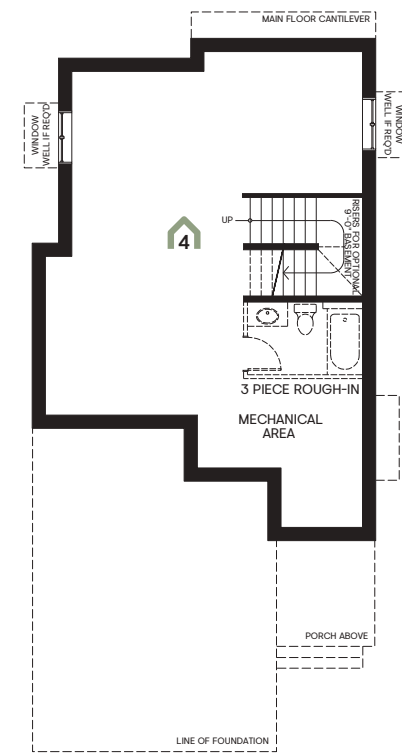
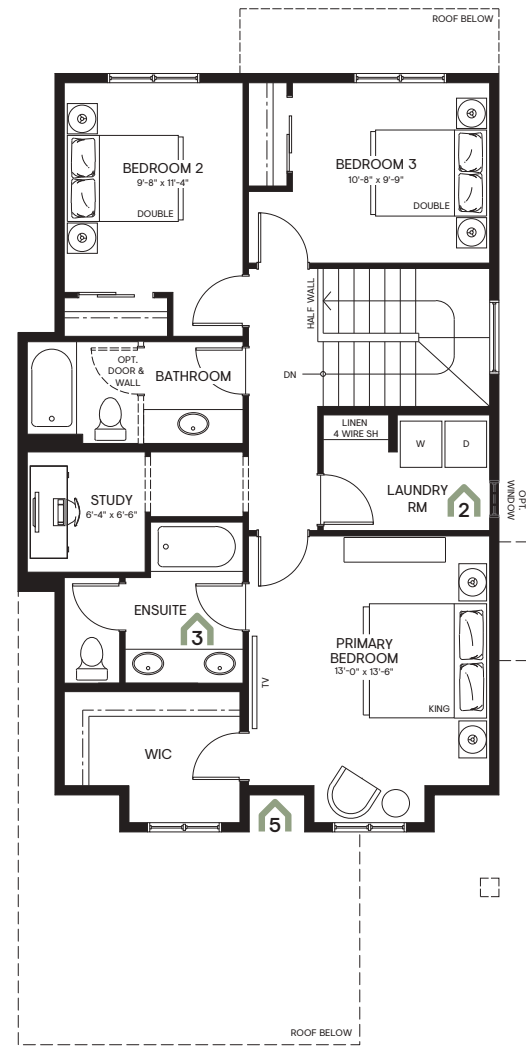
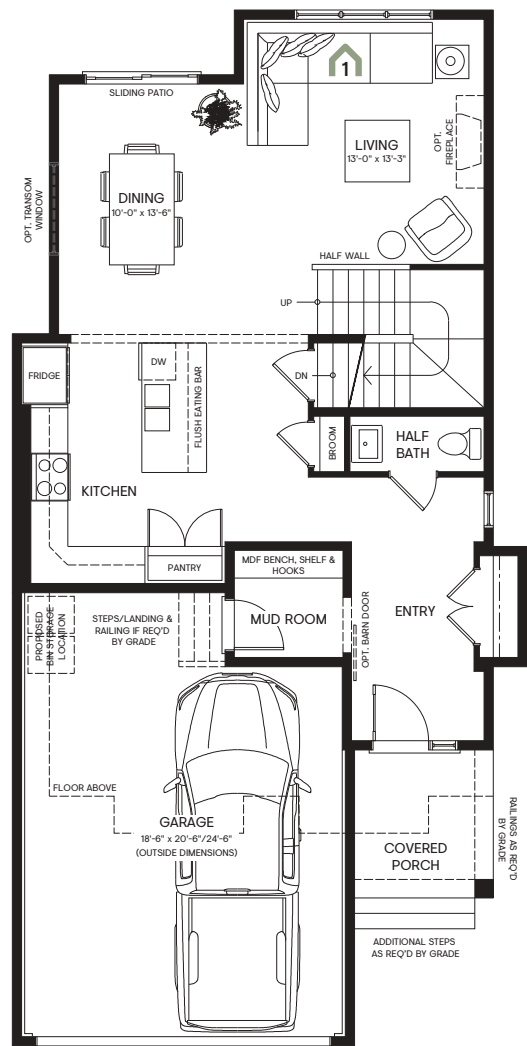


Traditional Farmhouse Elevation (A)  
1777 SQ.FT.

# Daisy 3

1777 SQ.FT. | 3 Bedrooms | 2.5 Baths | Double Car Garage

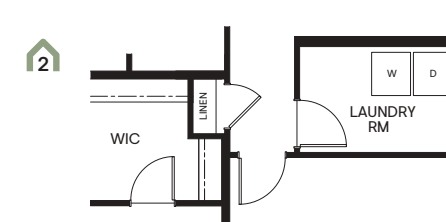
## WILDFLOWER SERIES



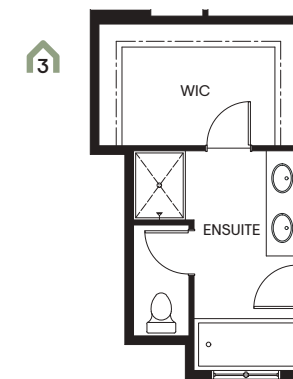
### FLEX OPTIONS



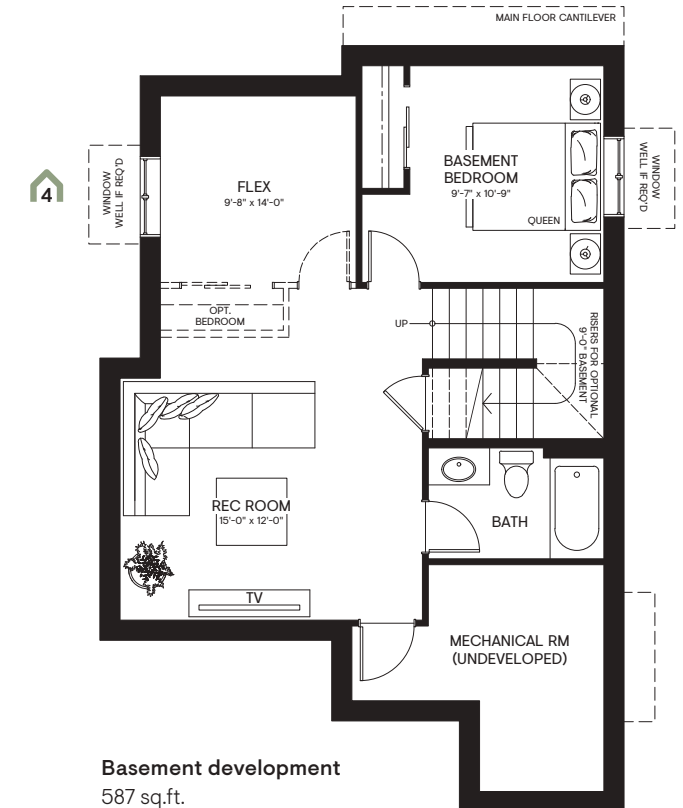
Alternative living room fireplace location & windows



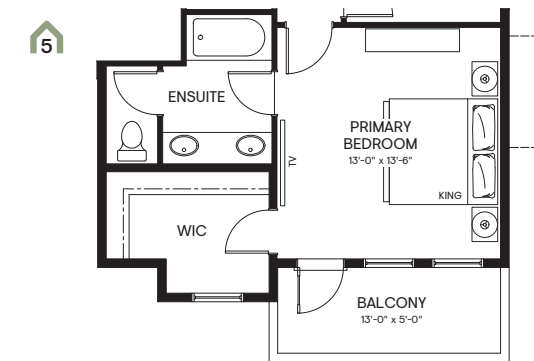
Laundry upgrade with upgraded ensuite  
\*Only available with ensuite upgrade flex plan



Ensuite upgrade



Basement development  
587 sq.ft.



Front balcony option  
\*Only available with the Modern Farmhouse Elevation (C)

The Developer reserves the right to make revisions if deemed appropriate in its sole discretion to all plans, dimensions, and specifications provided, including but not limited to window location and size. Actual usable floor space may vary from the stated floor area. The purchase price does not include any vehicles, accessories, or equipment shown. Renderings are artist's concepts only. Marketing floorplans reflect Traditional Farmhouse Elevation A (325F2603) unless otherwise stated. This drawing contains information which is proprietary to and is the property of the Developer and may not be used, reproduced, or disclosed in any manner other than in relation to the purchase of a home within this project without the permission of the Developer. Pricing subject to change without notice. E. & O. E. Revised September 2023.