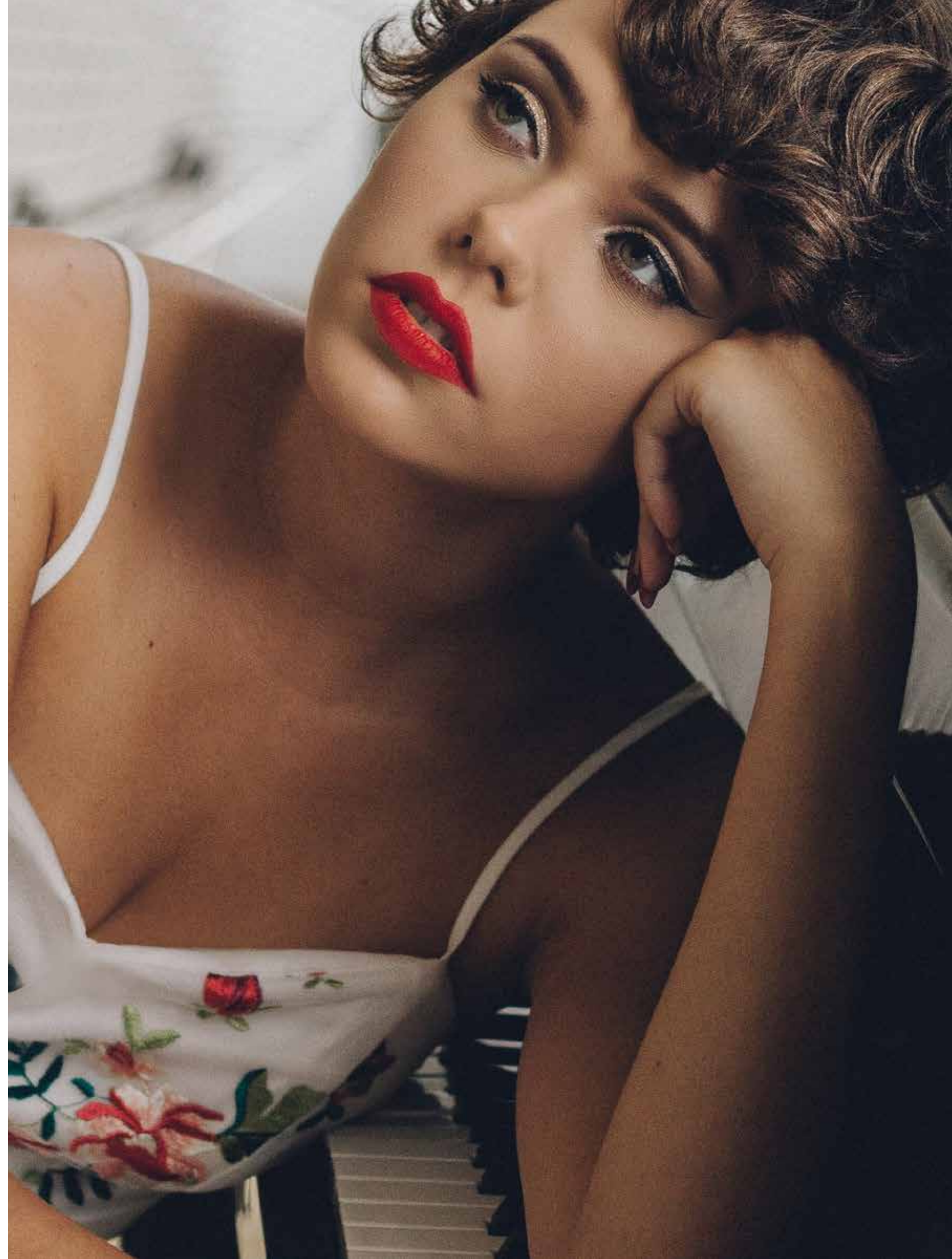


LAWRENCE HILL  
LUXURY URBAN TOWNS

*You brought me  
sunshine and laughter.  
You are my inspiration, my escape.  
I am part of you and  
you are forever a part of me.  
I adore you Lawrence.*







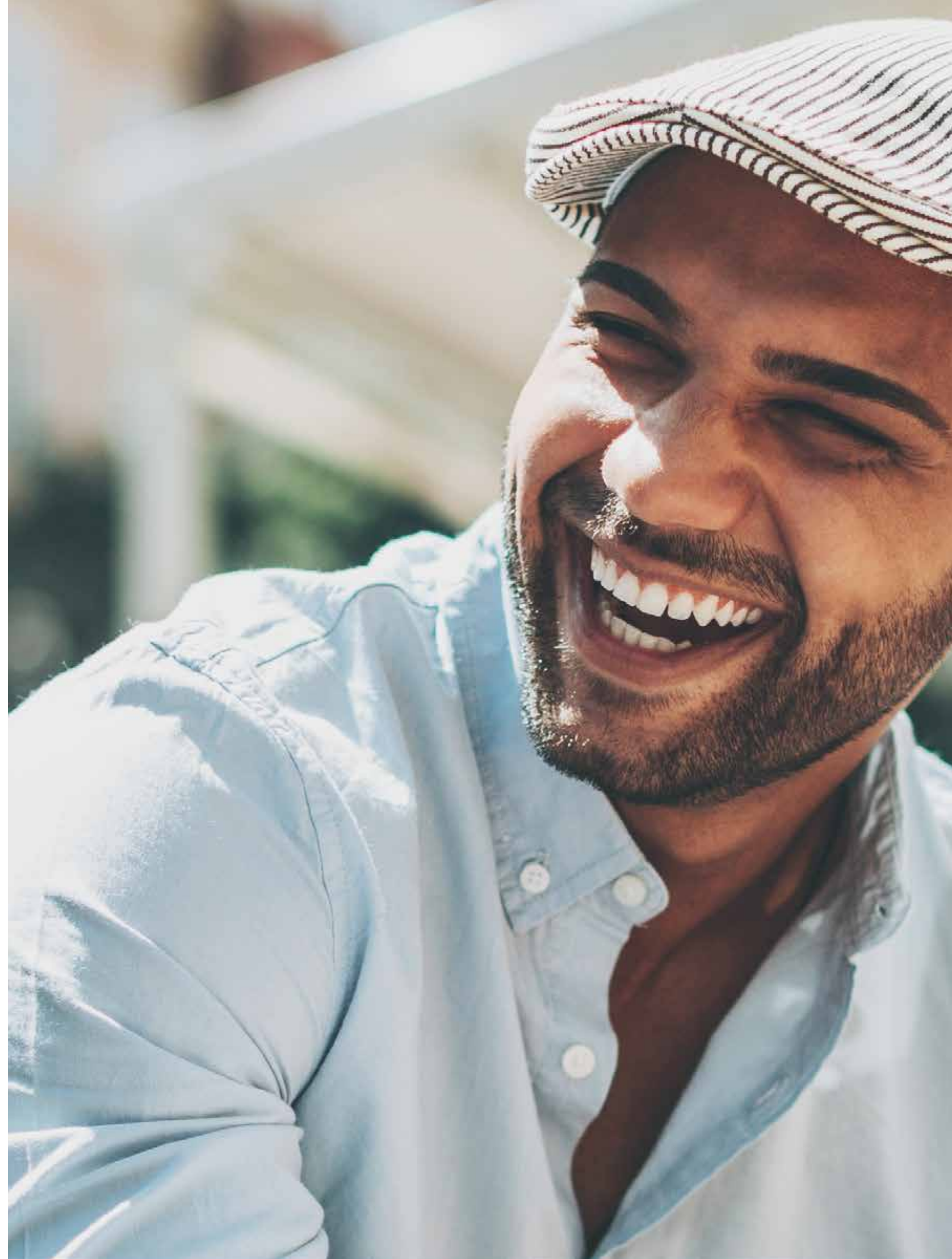
## *for the love of Lawrence*

WELCOME TO LAWRENCE HILL,  
A COLLECTION OF 200 LUXURY URBAN  
TOWNS NEAR DON MILLS & LAWRENCE,  
WITH THE DVP AND TRANSIT JUST OUTSIDE  
YOUR FRONT DOOR, OFFERING CONVENIENT  
CONNECTIONS ACROSS THE GTA.

DISCOVER MODERN DESIGN NESTLED  
IN A LUSHLY LANDSCAPED ENCLAVE,  
CLOSE TO EDWARDS GARDENS, THE  
ONTARIO SCIENCE CENTRE, AND THE  
SHOPS AT DON MILLS. EXPLORE SPACIOUS  
PLANS WITH ELEGANT FINISHES AND  
SOPHISTICATED DETAILS LIKE GOURMET  
KITCHENS, 9' CEILINGS, PICTURESQUE  
LANDSCAPING, GENEROUS BALCONIES  
AND TERRACES, AND TREETOP VIEWS. ONE  
LOOK IS ALL IT TAKES TO FALL IN LOVE.



*I miss you.  
From the moment I leave you.  
until I return.  
You're always on my mind.  
I love you Lawrence.*



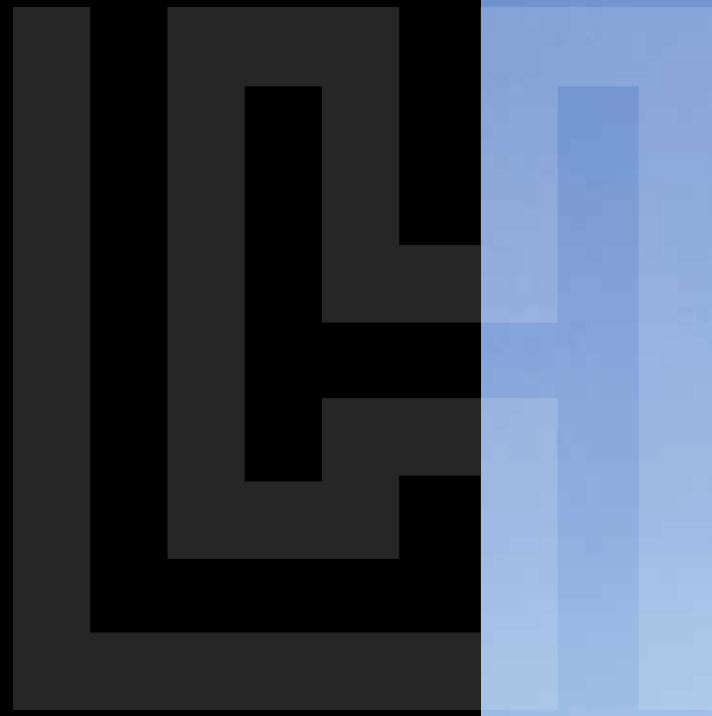




## *A Striking Balance*

DISCOVER ROOM TO GROW IN A BEAUTIFUL COMMUNITY, WITH NATURE AT ITS HEART. ENJOY QUALITY TIME IN A CENTRAL GREENSPACE WHERE FRIENDS CAN PICNIC, CHILDREN CAN PLAY, AND FAMILIES CAN CREATE LASTING MEMORIES OUTDOORS. FROM YOUR BALCONY ENJOY THE SOUND OF LAUGHTER AND THE WARMTH OF SUNLIGHT IN A SETTING THAT ENCOURAGES A DEEPER CONNECTION AND A HAPPIER, HEALTHIER WAY TO LIVE.





CONTEMPORARY  
ARCHITECTURE PROVIDES  
A RELAXING BACKDROP  
FOR EVERYDAY LIVING.  
ARCHITECTURALLY-  
SUPERIOR DARK BRICK  
VENEER AND DURABLE  
WOOD-LOOK ALUMINUM  
SIDING COMBINE IN  
STRIKING CONTRAST,  
ACCENTED BY EXPANSIVE  
WINDOWS AND GLAZED  
BALCONY RAILINGS THAT  
OFFER CLEAR SIGHTLINES  
ONTO THE EXQUISITE  
LANDSCAPE DESIGN.







LUSH LANDSCAPING LINES A SERIES OF THOUGHTFULLY-DESIGNED PROMENADES, PROVIDING A RAINBOW OF COLOUR THROUGHOUT THE SEASONS, AND AN INVITING PLACE TO GATHER, CONNECT OR SIMPLY STROLL UNDERNEATH THE SUN.



ORGANIC LANDSCAPES SOFTEN THE MODERN ARCHITECTURE, CREATING AN ENVIRONMENT THAT FEELS CONTEMPORARY YET COMFORTABLE. WHETHER WALKING THROUGH THE COURTYARD, PERCHED ON A PRIVATE URBAN PATIO, SITTING ON A BALCONY, OR LOUNGING ON AN ALL-SEASON ROOFTOP TERRACE, YOU'RE ALWAYS CONNECTED TO THE OUTDOORS.



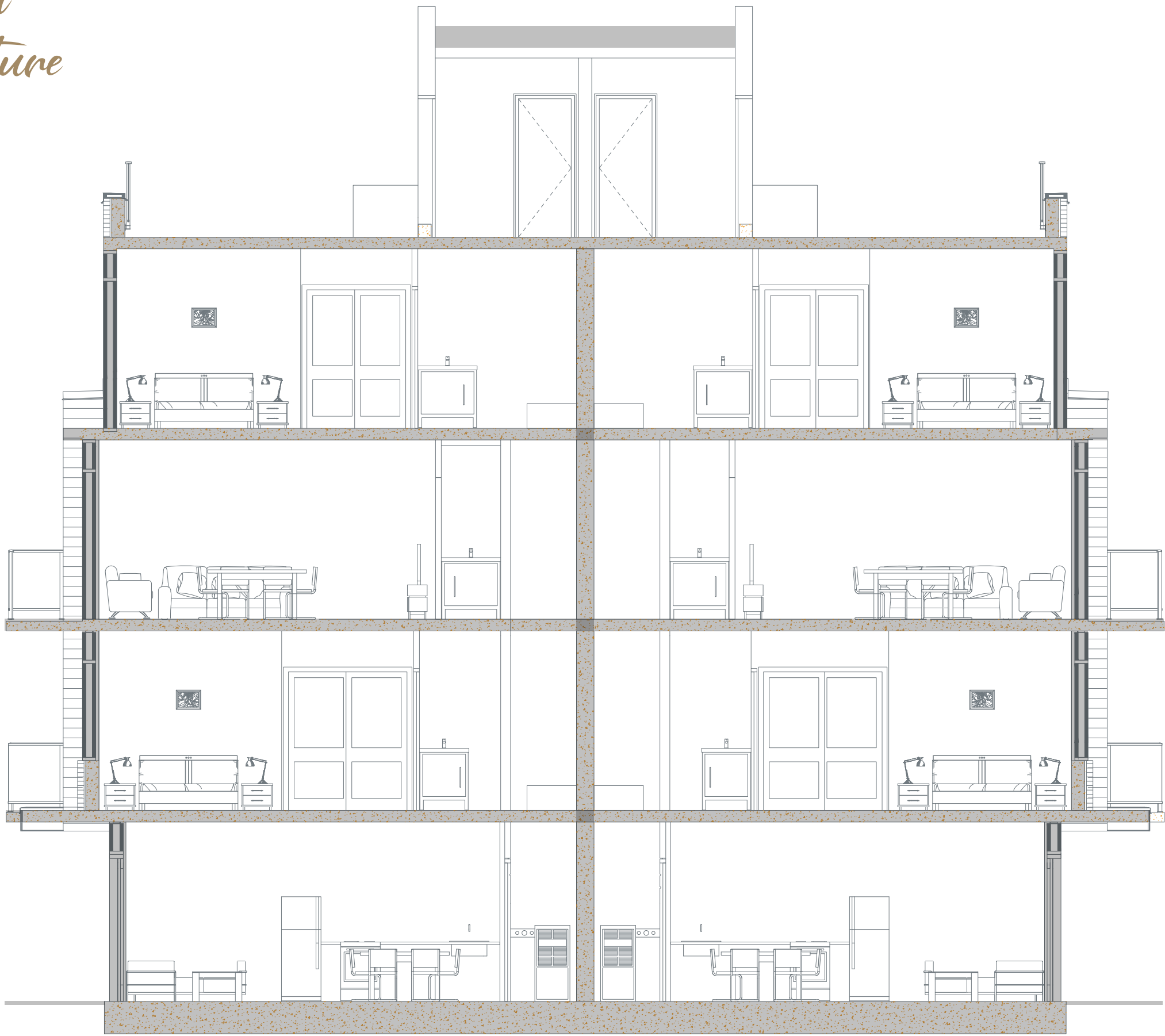


# Solid Reinforced Concrete Structure

**ENHANCE PRIVACY:**  
CONCRETE CONSTRUCTION PROVIDES A SOUND TRANSMISSION CLASS (STC) OF APPROXIMATELY 60, OFFERING MORE THAN TWICE THE SOUNDPROOFING OF A SINGLE-FAMILY WOOD STRUCTURE WITH AN AVERAGE STC OF 27.

**IMPROVED FIRE SAFETY:**  
CONCRETE IS ONE OF THE MOST FIRE-RESISTANT MATERIALS. FIRE-RELATED DAMAGE TO CONCRETE STRUCTURED BUILDINGS IS 7X LESS THAN WOOD STRUCTURE BUILDINGS.

**SUPERIOR QUALITY:**  
CONCRETE IS MORE RESISTANT TO MOISTURE, ELIMINATING ODORS AND OTHER SMELLS FROM THE BUILDING.



**ELIMINATES VIBRATION:**  
LIGHTWEIGHT FLOOR STRUCTURES ARE PRONE TO UNWANTED VIBRATIONS FROM EXTERIOR TRAFFIC AND UPPER FLOOR ACTIVITIES. A CONCRETE STRUCTURE ELIMINATES THOSE VIBRATIONS.

**LOWER INSURANCE EXPENSES:**  
CONCRETE STRUCTURE BUILDINGS HAVE LOWER INSURANCE RATES THAN WOOD STRUCTURE BUILDINGS.

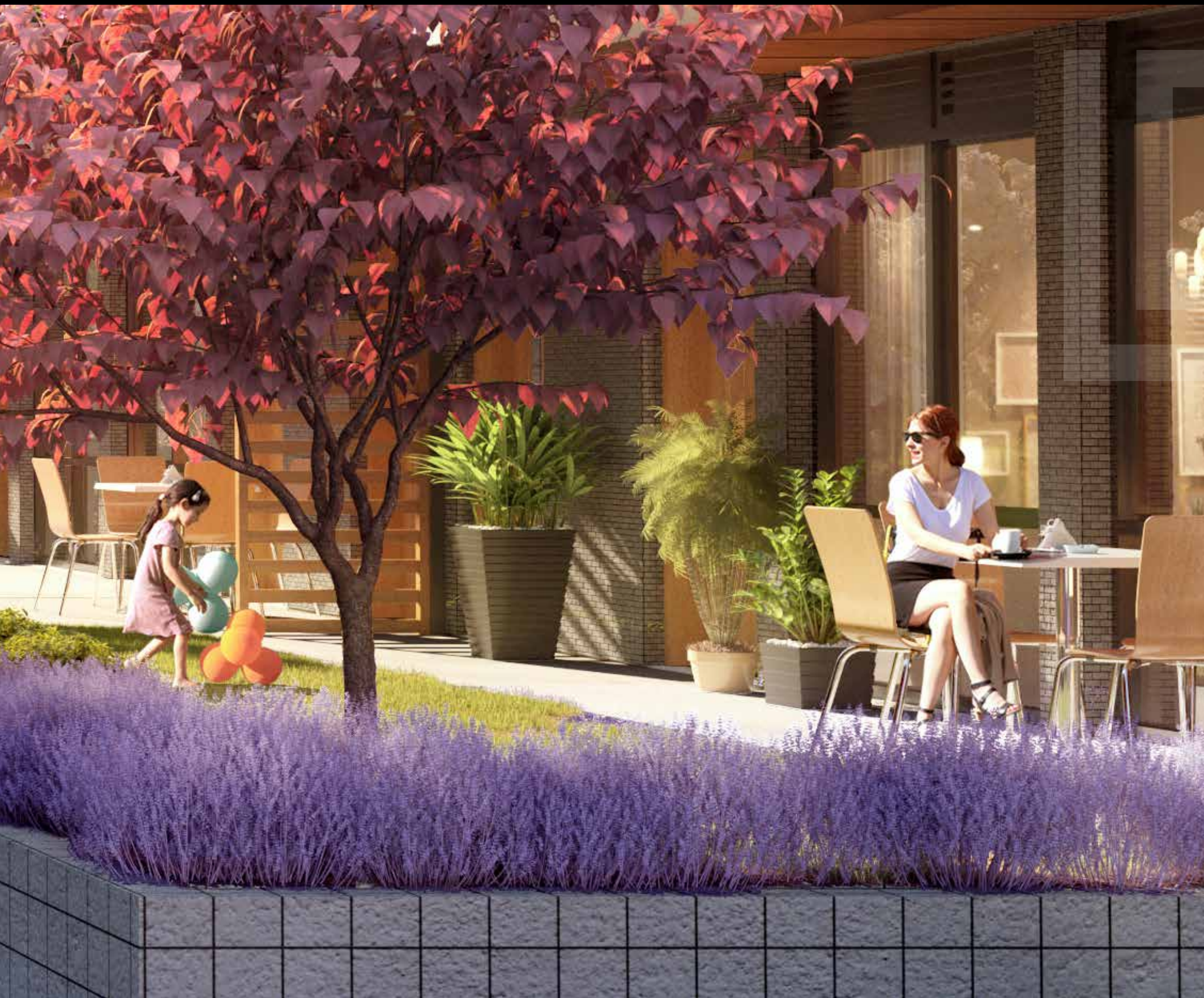
**IMPROVED INDOOR AIR QUALITY:**  
NO AIR CIRCULATION BETWEEN UNITS. INDEPENDENT FORCED AIR HEATING SYSTEMS AND NO CROSSOVER CIRCULATION BETWEEN UNITS PROVIDES BETTER AIR QUALITY, REDUCING MOISTURE AND MILDEW FROM THE BUILDING STRUCTURE.



EXPAND YOUR HORIZONS ON SPACIOUS BALCONIES AND ENORMOUS ROOFTOP TERRACES WHERE YOU CAN CREATE YOUR OWN URBAN BACKYARD. WITH BUILT-IN GAS BARBEQUE, WATER AND ELECTRICAL CONNECTIONS, AND SWEEPING TREETOP VIEWS, THESE EXPANSIVE SPACES OFFER A PRIVATE SANCTUARY FROM CITY LIFE.



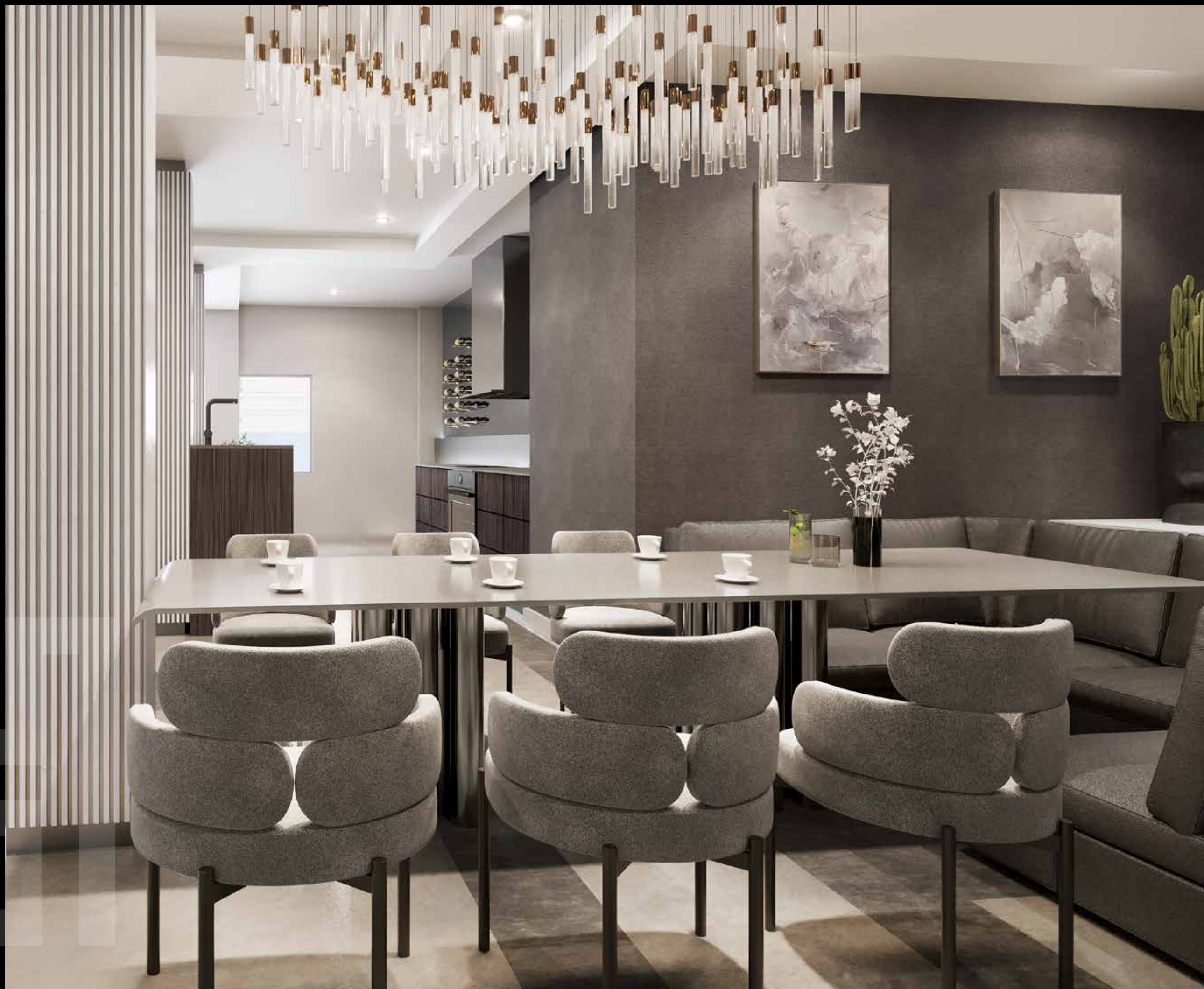




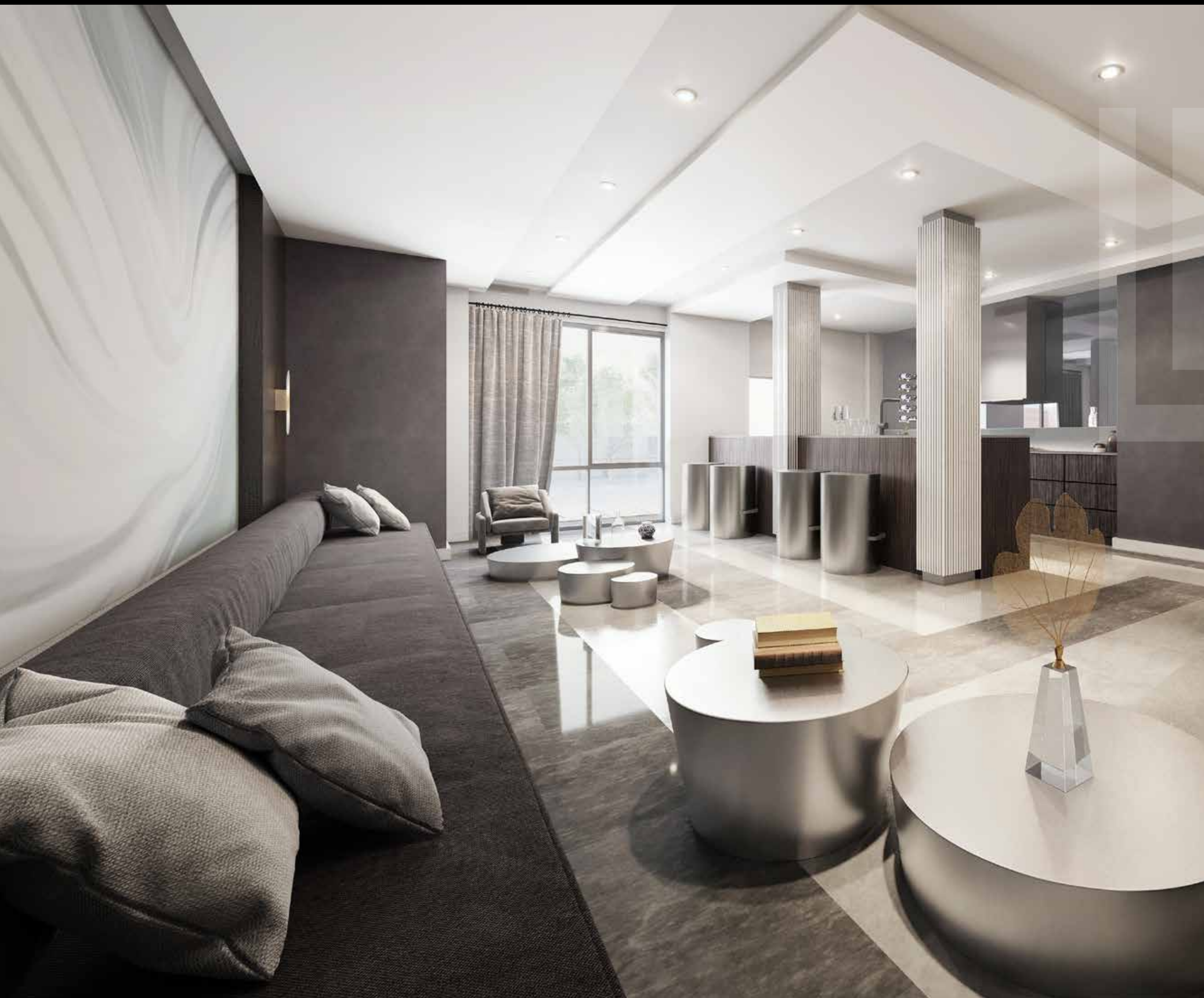
TAKE LIFE OUTDOORS  
ONTO PICTURESQUE  
PRIVATE GARDEN PATIOS  
SURROUNDED BY GREEN  
LAWNS, COLOURFUL  
PLANTS, AND UNDER  
A CANOPY OF TREES.  
DISCOVER THE LUXURY  
OF A SPACE WHERE YOUR  
FAMILY CAN CONNECT TO  
NATURE, ALL JUST OUTSIDE  
YOUR FRONT DOOR.



AT LAWRENCE HILL  
ENJOY THE PRIVACY  
AND INTIMACY OF MID-  
RISE LIVING, WITH ALL  
THE PERKS OF URBAN  
DESIGN INCLUDING  
AN UPSCALE AMENITY  
SPACE THAT ADAPTS  
FOR LARGE GATHERINGS  
AND PARTIES IN THE  
SLEEK DINING ROOM  
AND LOUNGE.







THE FLEXIBLE SPACE  
SERVES AS A WORK  
AND STUDY SPACE  
FOR TODAY'S MODERN  
LIFESTYLE. THE SHOW  
KITCHEN IS AN ELEGANT  
VENUE FOR A SPECIAL  
DINING EXPERIENCE.



## *Surrounded by Sophistication*

EXPLORE SPACIOUS,  
LIGHT-FILLED, 2- AND  
3-BEDROOM DESIGNS WITH  
ELEGANT FEATURES,  
BESPOKE FINISHES, AND  
SOPHISTICATED DETAILS  
INCLUDING 9' CEILINGS,  
HIGH-QUALITY CERAMIC  
OR PORCELAIN TILES  
AND MORE.

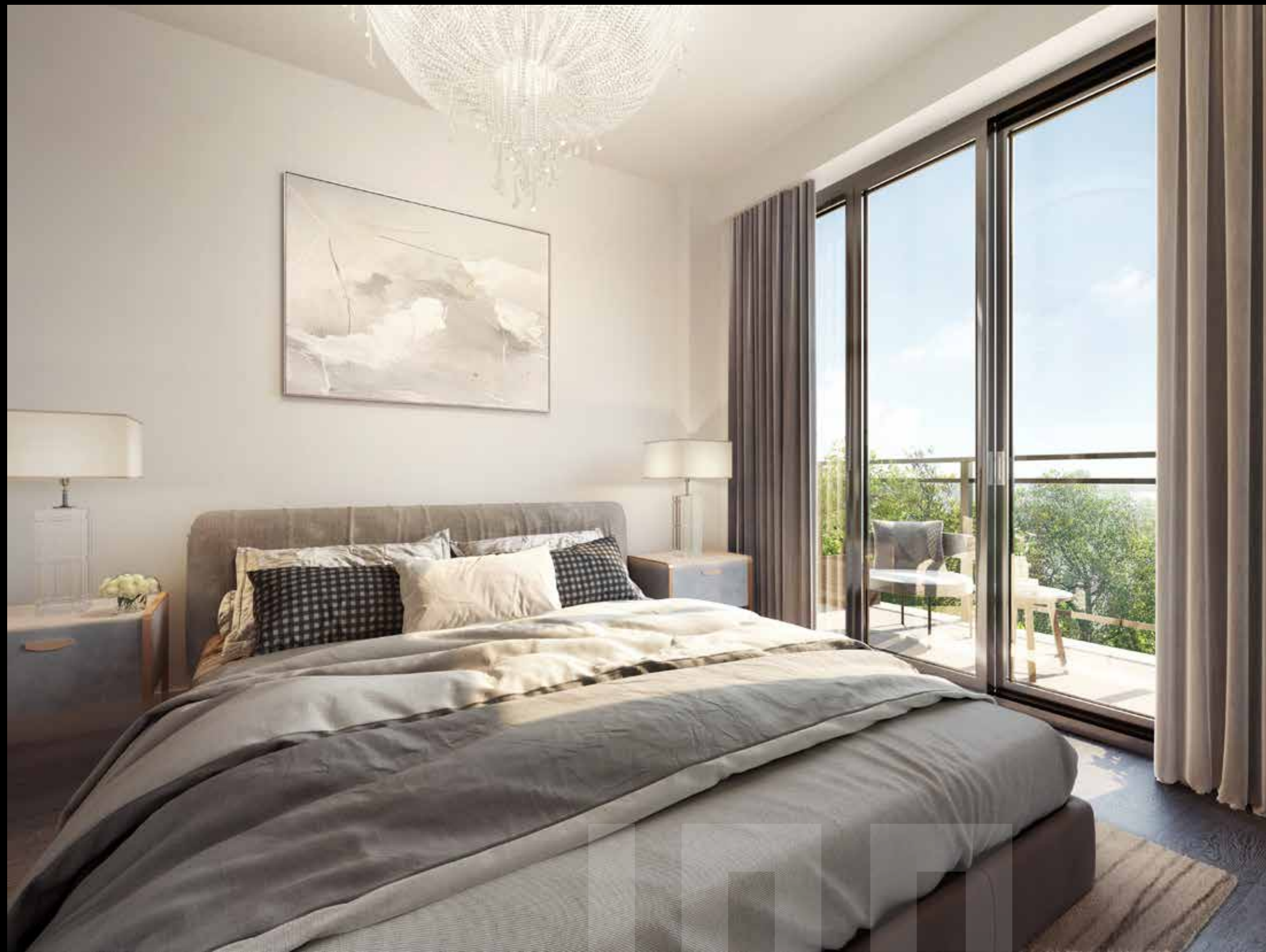






WIDE PLANK FLOORING CREATES A SEAMLESS TRANSITION FROM THE SPACIOUS LIVING/DINING ROOM INTO THE GOURMET KITCHEN. ELEGANT DETAILS LIKE QUARTZ COUNTERTOPS AND INTEGRATED APPLIANCES STRIKE THE PERFECT BALANCE BETWEEN LUXURY AND COMFORT, FUNCTION AND FORM.





WITH SPA-INSPIRED BATHROOMS AND LUXURIOUS  
BEDROOMS THAT FEATURE A PRIVATE BALCONY, LIFE  
AT LAWRENCE HILL OFFERS A RELAXING RETREAT  
FROM MODERN LIFE. START AND END EACH DAY  
SURROUNDED BY CONSIDERED DETAILS, DESIGNED TO  
PUT EVERYTHING YOU NEED AT YOUR FINGERTIPS.







GENEROUS PRIVATE BALCONIES EXTEND THE BOUNDARIES OF HOME. RELAX IN THE SUNLIGHT WITH VIEWS OVER THE TREETOPS, OR ENJOY THE SAME SPECTACULAR VISTA THROUGH THE FLOOR-TO-CEILING WINDOWS. THIS IS YOUR FRONT ROW SEAT TO NATURE'S BEAUTY, 24/7, 365 DAYS A YEAR.



# features & finishes

## EXTERIOR

- Luxurious contemporary design by an industry-leading architectural firm
- Modern clay brick exterior with distinguished contemporary wood textured dura-aluminum siding providing the beauty of wood, without the maintenance
- Energy-efficient LOW-E and argon thermopane double-glazed windows, combat both cold and warm weather impacts inside your home
- Durable colour-fast glazed aluminum-framed balcony railings
- Private rooftop terrace oasis for enhanced outdoor living, with gas BBQ connection, water hose bib, and GFCI outdoor outlet \*
- Private urban patio garden for ground floor towns
- Gated and secure underground parking with card/remote control access
- Secured underground resident bicycle parking
- Convenient visitor bicycle parking
- Thoughtfully-designed lush landscaping, enhancing the

natural environment and the tranquil park-like setting throughout the promenades, parkettes and activity areas

- Energy-efficient landscape accent lighting for increased visibility and security, and a warm and welcoming ambiance
- Efficient and eco-friendly rainwater management system with storm water system to capture rain for the building's plants and soft landscape areas

## TOWNHOUSE RESIDENCE INTERIORS

- Approximately 9 ft ceilings
- Designer-selected choice of ceramic or porcelain floor tile in bathrooms, powder room and laundry room
- Contemporary wide plank laminate flooring throughout main living area, kitchen and bedrooms

## GOURMET KITCHEN FEATURES

- Designer-crafted kitchen layouts with contemporary cabinet finishes

- Choice of designer-selected quartz countertops with extra-depth polished edging
- Integrated fridge
- Energy Star appliances to help reduce energy costs
- Slim profile smooth-surface cooktop with full touch-sensitive control and LED display
- Stainless steel energy-efficient convection wall oven with high-capacity integrated stainless steel range hood
- Integrated silent operation high-capacity dishwasher
- Stainless steel microwave
- Undermount extra-wide stainless steel sink with designer faucet and convenient pull-out vegetable spray
- Elegant soft-close hinge and drawer mechanisms
- Choice of designer-selected ceramic/porcelain tile backsplash

## LUXURIOUS BATHROOM FEATURES

- Choice of designer-selected quartz countertops with extra-depth polished edging

- Elegant designer vanity with soft-close hinges and hardware drawers
- Choice of designer-selected mosaic tiles for shower floor
- Choice of designer-selected wall ceramic tile for tub/shower walls \*
- Frameless tempered glass shower enclosures
- Elegant full-width mirrors in all main baths, ensuite and powder rooms

## ELECTRICAL AND EXTRAS

- 100 AMP electrical service
- Individual gas/hydro/water meters
- On-demand high-efficiency tankless hot water system
- Programmable smart thermostat, conveniently and centrally located
- Individual air-handling/heating system with energy-recovery ventilator (ERV), to help you save on energy costs, while improving indoor air quality
- Individual air conditioning units
- Smart doorbell conveniently located at all entryways for each townhouse



- Switched light fixtures in kitchen area, bedrooms, bathrooms, stairwells, and hallways
- Light-emitting diode (LED) light fixtures
- White Decora-style plugs and switches throughout
- GFCI outlet protection in kitchen, all bathrooms and powder room
- Laundry room with stacked front-load washer and dryer
- Conveniently placed TV cable and telephone outlets in living room and master bedroom

## PARKING

- Optional upgrade for separately metered electric vehicle charger (limited quantity)
- Fully sprinklered underground parking garage

\* As per plan, all specifications are subject to change without notice. All illustrations are artist concepts. E & OE. Kingdom Development Inc. 2021. All rights reserved.



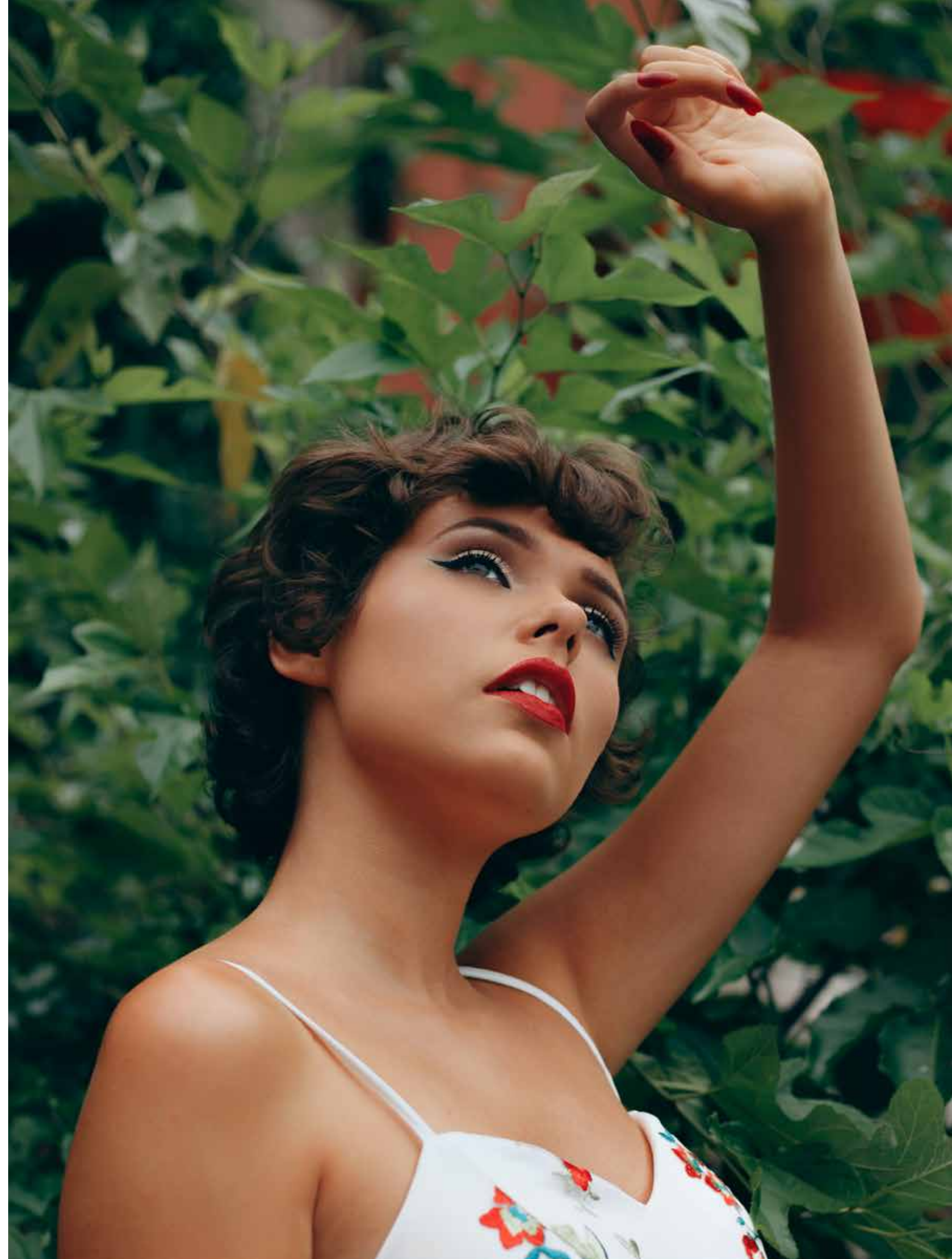
## *Electrical and Extras*

LAWRENCE HILL OFFERS A NUMBER OF THOUGHTFUL EXTRAS AND ELECTRICAL FEATURES, DESIGNED TO POWER UPSCALE LIVING. INDIVIDUAL GAS/HYDRO/WATER METERS AND PROGRAMMABLE SMART THERMOSTATS GIVE YOU TOTAL CONTROL OVER YOUR ENERGY USE, ENDLESS ON-DEMAND HOT WATER ENSURES TOTAL COMFORT, AND THE OPTION TO UPGRADE TO A SEPARATED METER AND ELECTRIC VEHICLE CHARGER PUTS YOU AT THE FOREFRONT OF SUSTAINABILITY.





*You take me places  
I've never been before.  
Where the sun warms my skin.  
Where colours create rainbows.  
You expand my horizons.  
Lawrence, you are my happy place.*







EGLINTON  
CROSSTOWN

## Transit

JUST MINUTES FROM THE DVP, LAWRENCE HILL KEEPS YOU CONNECTED TO THE CITY'S MOST IMPORTANT HIGHWAY, A QUICK STOP FROM THERE TO THE 401, THE GARDINER EXPRESSWAY OR EVEN THE 407. THEN OF COURSE THERE'S THE TTC, WITH THE "LAWRENCE 54" OR "VICTORIA PARK 24" BUSES OFFERING AN EASY CONNECTION TO THE YONGE-UNIVERSITY AND BLOOR-DANFORTH SUBWAY LINES.

### SHOPS & RESTAURANTS



THE SHOPS AT  
DON MILLS  
4-MIN



BAYVIEW VILLAGE  
10-MIN



FAIRVIEW MALL  
7-MIN



YORKDALE  
15-MIN

### SCHOOLS



SENECA COLLEGE  
9-MIN



CENTENNIAL COLLEGE  
14-MIN



YORK UNIVERSITY-  
GLEDON CAMPUS  
13-MIN

### PARKS & RECREATION



CHARLES SAURIOL  
CONSERVATION AREA  
3-MIN



EDWARDS GARDENS  
14-MIN



SUNNYBROOK PARK  
7-MIN



DON VALLEY  
GOLF COURSE  
10-MIN

### TRANSPORTATION



UNION STATION  
15-MIN



BILLY BISHOP AIRPORT  
20-MIN



TORONTO PEARSON  
AIRPORT  
24-MIN

### HOSPITALS



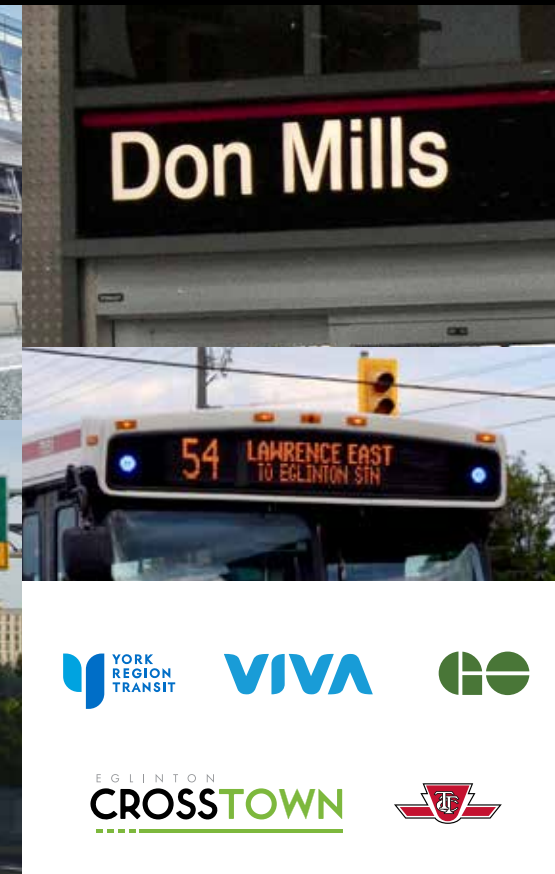
NORTH YORK  
GENERAL HOSPITAL  
8-MIN



SUNNYBROOK  
HEALTH SCIENCES  
13-MIN



SCARBOROUGH  
HOSPITAL  
14-MIN



### GO TRAIN STATIONS



### TTC/YRT BUS STOPS



### TTC LINES



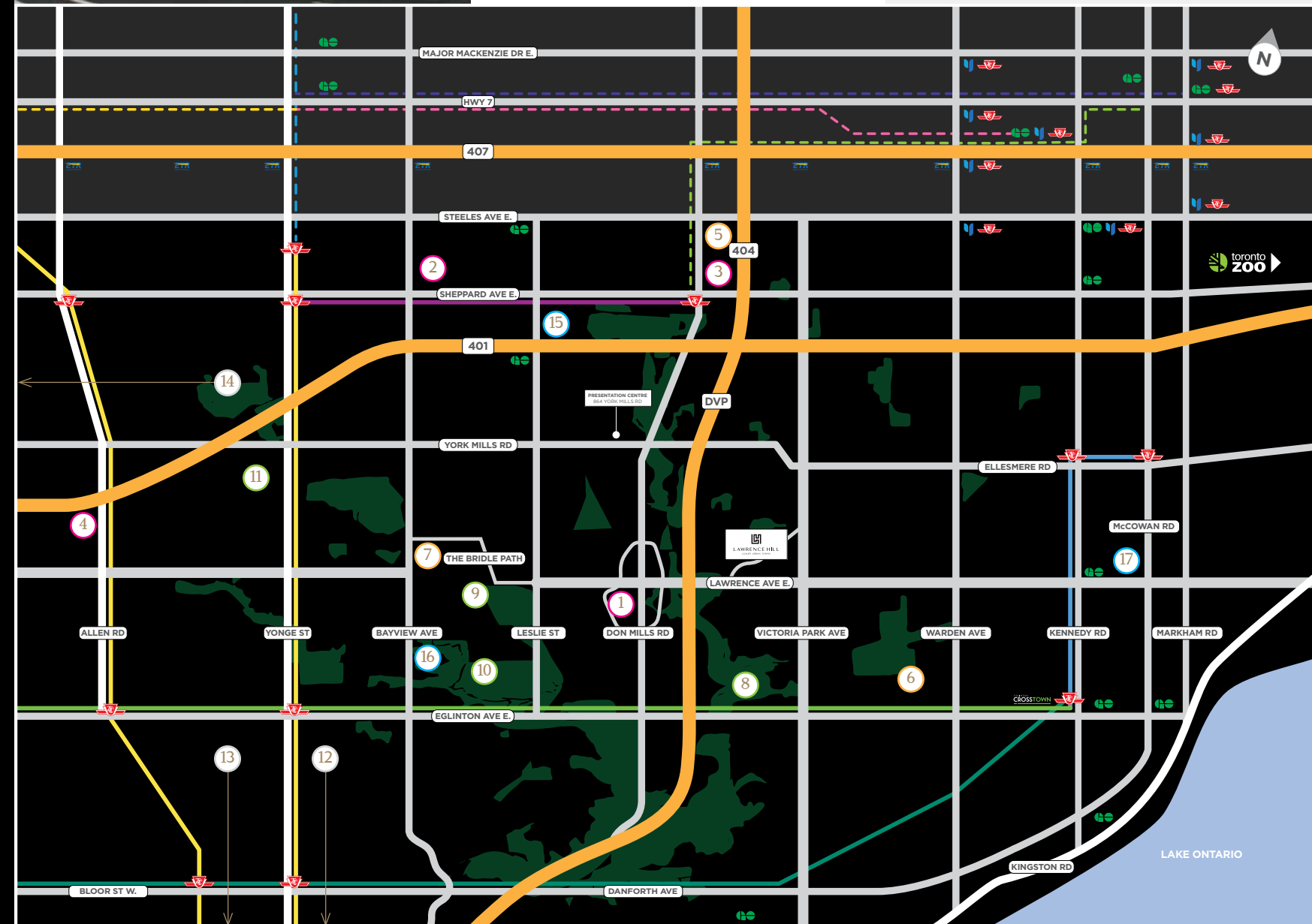
### EGLINTON CROSSTOWN



### HIGHWAYS



### VIVA TRANSIT







YORK UNIVERSITY GLENDON CAMPUS



TORONTO FRENCH SCHOOL

## Education

LIVE WITHIN WALKING DISTANCE TO  
A NUMBER OF EXCELLENT JUNIOR, MIDDLE,  
AND SENIOR SCHOOLS, WELCOMING CHILDREN  
FROM KINDERGARTEN TO GRADE 12.

### PRIVATE SCHOOLS

- CRESTWOOD PREPARATORY COLLEGE
- E ELEM JEANNE- LAJOIE
- SEERAH MISSION SCHOOL

### CATHOLIC SCHOOLS

- ST. CATHERINE CATHOLIC
- ST. ISAAC JOGUES CATHOLIC SCHOOL
- SENATOR O'CONNOR COLLEGE
- PRECIOUS BLOOD CATHOLIC SCHOOL

### PUBLIC SCHOOLS

- BROADLANDS PUBLIC SCHOOL
- MILNE VALLEY MIDDLE SCHOOL
- CASSANDRA PUBLIC SCHOOL
- THREE VALLEYS PUBLIC SCHOOL
- VICTORIA PARK COLLEGIATE
- GEORGE S. HENRY ACADEMY
- ROYWOOD PUBLIC SCHOOL
- DONVIEW MIDDLE SCHOOL
- FENSIDE PUBLIC SCHOOL



# *Universities & Colleges*

WITH RYERSON UNIVERSITY, YORK UNIVERSITY, THE UNIVERSITY OF TORONTO, SENECA COLLEGE, GEORGE BROWN COLLEGE, AND OCAD ALL LESS THAN 20 MINUTES AWAY, LAWRENCE HILL IS CLEARLY THE SMARTER CHOICE FOR HIGHER EDUCATION.

## HIGHER EDUCATION

- SENECA COLLEGE
- UNIVERSITY OF TORONTO SCARBOROUGH
- YORK UNIVERSITY GLENDON COLLEGE
- STANFORD INTERNATIONAL COLLEGE
- CITI COLLEGE OF CANADIAN CAREERS
- ROYAL CANADIAN COLLEGE OF MASSAGE THERAPY
- CANADIAN COLLEGE OF NATUROPATHIC MEDICINE
- TORONTO COLLEGE OF TECHNOLOGY
- VICTORIA INTERNATIONAL COLLEGE
- PHARMA-MEDICAL SCIENCE COLLEGE OF CANADA





## Employment

OPPORTUNITY, DRIVE AND AMBITION  
COLLIDE IN A LOCATION BURSTING WITH  
BUSINESS, EMPLOYMENT AND GROWTH.

# 62% OF EMPLOYMENT ARE IN NORTH YORK.

HOW MANY JOBS?

## 34,920

HOW MANY COMPANIES?  
COMPRISING OF

## 2.4%

OF JOBS IN THE CITY. 8/10 JOBS  
IN NORTH YORK ARE OFFICE JOBS.

## 80.8%

HOW FAR?

## 15 MIN

SCARBOROUGH EMPLOYMENT  
CENTRE (PART OF THE 5 URBAN  
GROWTH CENTRES)

## 26.8%

OF EMPLOYMENT ARE  
IN SCARBOROUGH.

HOW MANY JOBS?

## 15,250

HOW MANY COMPANIES?  
COMPRISING OF

## 1.1%

OF JOBS IN THE CITY.

HOW FAR?

## 12 MIN

CENTRAL DON MILLS  
(SECONDARY PLAN AREA)  
HOW MANY JOBS?

## 4,610

HOW FAR?

## 8 MIN

DON MILLS CROSSING  
(SECONDARY PLAN AREA)  
HOW MANY JOBS?

## 1,980

HOW FAR?

## 6 MIN



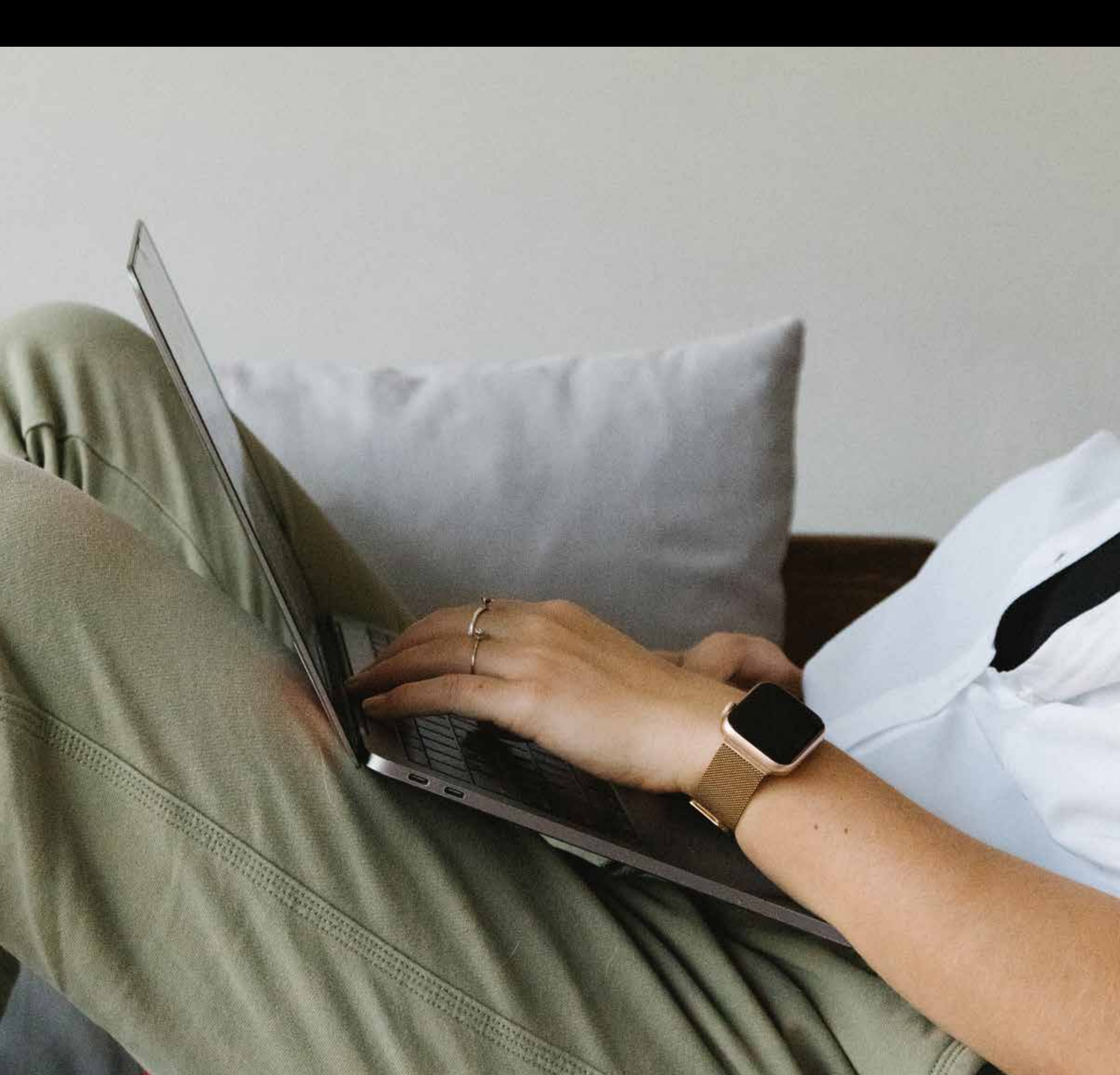
# 56,760 JOBS

WITHIN A 15-MIN RADIUS

## OVER 100,000 EMPLOYED WITHIN A 15 MIN COMMUTE

A STRONG ECONOMIC AREA  
WITH A HIGH DEMAND FOR HOUSING.





## *Work from Home*

LAWRENCE HILL GIVES YOU EVERYTHING YOU NEED TO BE YOUR MOST PRODUCTIVE, EVEN FROM THE COMFORT OF HOME. TAKE ADVANTAGE OF A FLEXIBLE AMENITY SPACE WHERE YOU CAN MEET, WORK, STUDY, BRAINSTORM, COLLABORATE AND COME UP WITH YOUR BEST IDEAS IN A NEW ERA WHERE MORE AND MORE WORKERS WILL BE CONNECTED ANYWHERE, ANY TIME.

CANADIANS HAVE WORKED FROM HOME TO VARYING DEGREES SINCE APRIL 2020.

FROM APRIL 2020 TO JUNE 2021,

# 45%

OF DUAL-EARNER SALARIED COUPLES IN THE TOP 10% OF THE EARNINGS DISTRIBUTION HAD BOTH SPOUSES WORKING FROM HOME.



## *A Vibrant Destination*

AT LAWRENCE HILL YOU'LL  
DISCOVER A COMMUNITY  
CLOSE TO TRANSIT, SHOPPING,  
DINING, ARTS, CULTURE,  
EDUCATION, PARKS, COMMUNITY  
- EVERYTHING THAT MAKES  
URBAN LIVING SO ATTRACTIVE,  
BUT TUCKED AWAY FROM THE  
CHAOS OF CITY LIFE. STAY  
CONNECTED, DOWN THE STREET,  
DOWNTOWN, ACROSS TOWN, ALL  
FROM A PEACEFUL LOCATION,  
SURROUNDED BY NATURE.





# Neighbourhood Legend



SHOPS &  
RESTAURANTS



ATTRACTIONS



PARKS &  
RECREATION



SCHOOLS



HOSPITALS

EGLINTON  
CROSSTOWN LRT

TTC

BUS ROUTE

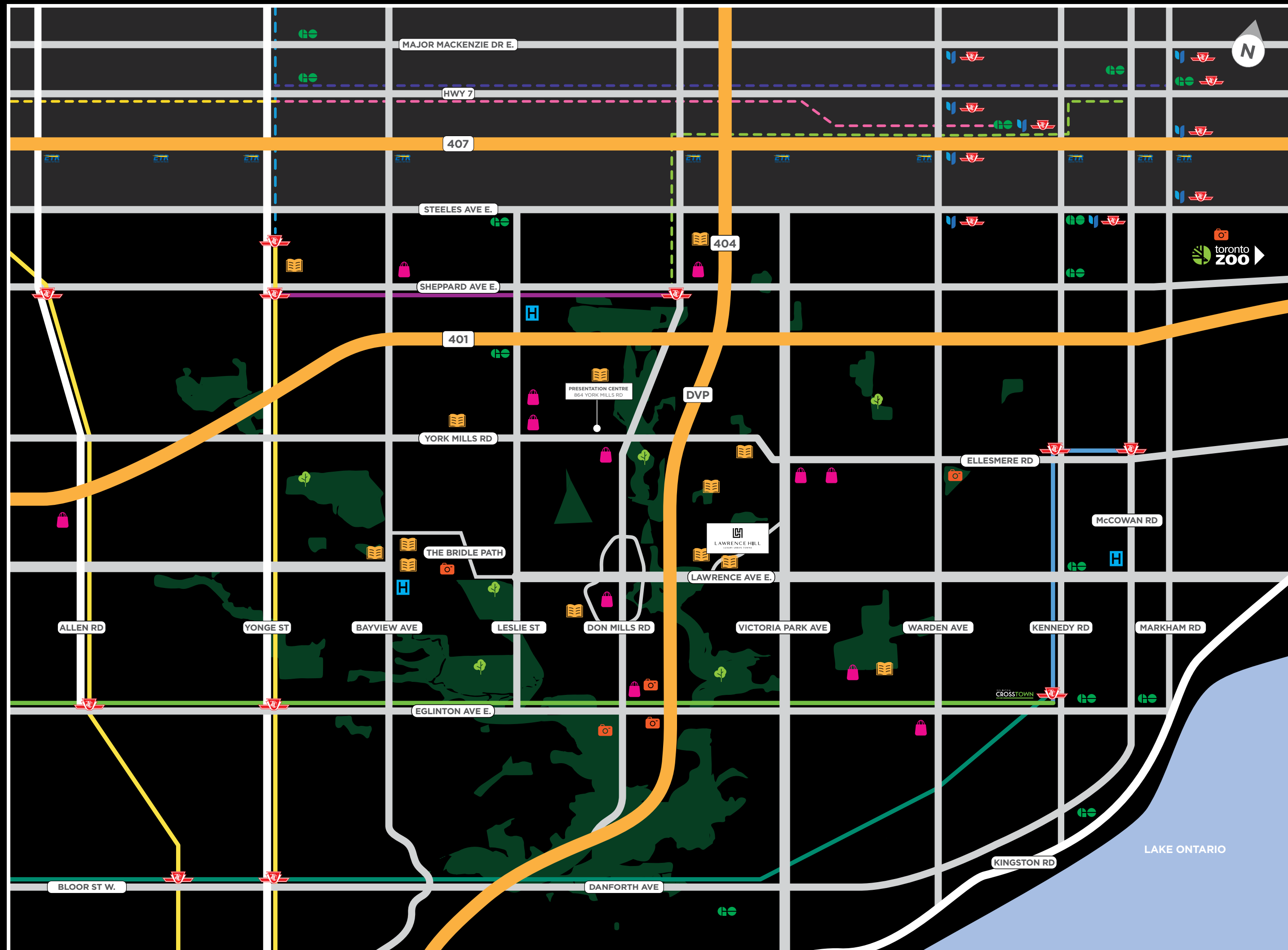
YONGE LINE

SHEPPARD LINE

GO BUS STATION



HWYS







## *Shopping. Dinning & Entertaining*

BAYVIEW VILLAGE, THE ONTARIO  
SCIENCE CENTRE, AND THE SHOPS AT  
DON MILLS ARE ALL CLOSE TO HOME,  
OFFERING PREMIUM RETAIL, DINING  
AND ENTERTAINMENT EXPERIENCES.

SHOPS AT DON MILLS  
FAIRVIEW MALL  
SMART CENTRE SCARBOROUGH  
BAYVIEW VILLAGE  
SCARBOROUGH TOWN CENTRE  
YORKDALE MALL







# Parks

GET YOUR FILL OF GREEN AT THE CHARLES SAURIOL CONSERVATION AREA, THE EAST DON RIVER TRAIL, OR AT EDWARDS GARDENS. FLOWERS, FIELDS, PLANTS, AND TREES IN BLOOM THROUGH EVERY SEASON.

- CHARLES SAURIOL CONSERVATION AREA
- EDWARDS GARDENS
- DORSET PARK
- BROADLANDS PARK
- TORONTO PUBLIC PARK
- SCARBOROUGH BLUFFS
- ROWENA PARK
- WIGMORE PAR

## OFF LEASH DOG PARKS:

- LINKWOOD LANE DOG PARK
- SUNNYBROOK DOG PARK
- THOMSON MEMORIAL DOG PARK



EDWARDS GARDENS



CHARLES SAURIOL CONSERVATION AREA



SUNNYBROOK DOG PARK





## *The Kingdom Story*

SINCE 1997, KINGDOM HAS BEEN COMMITTED TO BUILDING BETTER COMMUNITIES FOR THE CITIES THEY CHOOSE TO INVEST IN, AND PROVIDING BETTER LIFE EXPERIENCES FOR THE FAMILIES WHO DECIDE TO MAKE KINGDOM THEIR HOME.

FOR OVER 20 YEARS, KINGDOM HAS BROUGHT THEIR UNIQUE VISION AND PERSPECTIVE TO COMMUNITIES AROUND THE WORLD. YOU WILL FIND THAT VISION EXPRESSED IN PROJECTS RANGING FROM INFILL ENCLAVES THAT ENHANCE ESTABLISHED NEIGHBOURHOODS, TO MAJOR DEVELOPMENTS THAT HELP TO TRANSFORM CITIES.

WITH INTERESTS IN REAL ESTATE DEVELOPMENT, INVESTMENTS, PROPERTY MANAGEMENT, LANDSCAPING AND MODERN AGRICULTURE, KINGDOM IS A BROADLY-BASED GROUP OF COMPANIES OPERATING IN VANCOUVER, TORONTO AND CHINA. THEIR PORTFOLIO OF ACCOMPLISHMENTS INCLUDES MILLIONS OF SQUARE METRES BUILT AND DEVELOPED, INCLUDING RESIDENTIAL AND COMMERCIAL PROJECTS AS WELL AS ENTERTAINMENT COMPLEXES AND CONFERENCE CENTRES.



# An Inspired Team



## TOMAS PEARCE

TOMAS PEARCE IS AN INTERNATIONAL INTERIOR DESIGN FIRM THAT SPECIALIZES IN LUXURY COMMERCIAL AND RESIDENTIAL SPACES. RECOGNIZED FOR THEIR ATTENTION TO DETAIL AND POLISHED ELEGANCE, THE FIRM IS A GLOBAL SOURCE FOR INSPIRATION AND STYLE AND ONE OF THE MOST SOUGHT-AFTER STUDIOS IN THE INDUSTRY. FOUNDED IN 2005 BY PRINCIPALS MELANDRO QUILATAN AND TANIA RICHARDSON, THE STUDIO BOASTS AN IMPRESSIVE TEAM OF IN-HOUSE TALENT, ALL UNITED BY A LOVE OF EXCEPTIONAL DESIGN.



## TAES Architects Inc.

THE TALENTED TEAM OF ARCHITECTS AND DESIGNERS AT TORONTO-BASED TAES ARCHITECTS INC. COME FROM DIVERSE INTERNATIONAL BACKGROUNDS, HAVING STUDIED AND WORKED ON FOUR CONTINENTS, FROM AUSTRALIA TO ASIA, NORTH AMERICA TO EUROPE. WITH THEIR VARIED EXPERIENCES, IDEAS, AND CULTURES, THEY CREATE INSPIRED DESIGNS THAT ARE BOTH PRACTICAL AND UNIQUE. FOR MORE THAN 10 YEARS, TAES HAS BEEN USING THEIR EXTENSIVE KNOWLEDGE AND PASSION TO TAKE A PROJECT FROM CONCEPT TO REALITY.



## The Planning Partnership

FORMED IN TORONTO IN 2002, THE PLANNING PARTNERSHIP (TPP) IS A DIVERSE GROUP OF SKILLED PROFESSIONALS WITH A PASSION FOR COLLABORATION AND A SHARED VISION FOR CREATING GREAT PLACES TO LIVE, WORK AND PLAY. THE MULTI-DISCIPLINARY FIRM BOASTS AN IMPRESSIVE TRACK RECORD OF BALANCED, PRINCIPLED, FORWARD-THINKING URBAN SPACES THAT IMPROVE THE BUILT AND NATURAL ENVIRONMENTS OF TODAY, WHILE FORECASTING THE NEEDS OF FUTURE GENERATIONS.



## 5

OUR 30 YEARS OF EXTENSIVE EXPERIENCE AFFORDS US AN ACUTE PERSPECTIVE AND THE ABILITY TO GUIDE A PROJECT SMOOTHLY AND SEAMLESSLY THROUGH THE CONSTRUCTION PROCESS. WE ARE COGNISANT OF THE MANY COMPLEX ISSUES, FOR WHICH THE PRECISE EXECUTION IS CRUCIAL, TO ENSURE A WELL CONSTRUCTED AND SUCCESSFUL PROJECT. THE RESULTS CAN BE SEEN THROUGH THE 6,500+ UNITS OF RESIDENTIAL CONDOMINIUMS, PURPOSE-BUILT RENTALS, TOWNHOMES, AND CUSTOM HOMES WHICH 59 PROJECT MANAGEMENT INC. HAS SUCCESSFULLY DELIVERED.



## CORNERSTONE MARKETING REALTY

CORNERSTONE MARKETING REALTY IS STEADFAST IN ITS PURSUIT OF INNOVATION. WITH OVER 20 YEARS OF UNMATCHED EXPERIENCE, CO-FOUNDERS JOHNSON CHENG AND SHAB RAJABZADEH HAVE FORGED THEIR OWN PATH, TRANSFORMING NEW DEVELOPMENT REAL ESTATE WITH PIONEERING MARKETING AND PLANNING STRATEGIES. THEY METICULOUSLY DESIGN AND EXECUTE DISTINCT CAMPAIGNS THAT ENSURE CLIENTS' SUCCESS, AND ARE DEDICATED TO DISCOVERING THE UNIQUE OPPORTUNITIES THAT COME WITH EACH INDIVIDUAL PROJECT.



## montanasteele

MONTANA STEELE HAS BEEN CREATING AWARD-WINNING REAL ESTATE BRANDS, AT HOME AND AROUND THE WORLD, FOR MORE THAN 25 YEARS. THE TORONTO-BASED FIRM IS WIDELY REGARDED AS NORTH AMERICA'S LEADING AGENCY FOR NEW HOME AND CONDO DEVELOPMENTS, AND FOR GOOD REASON: THEY'VE LAUNCHED NEARLY 1000 SUCCESSFUL PROJECTS, IN 30 CITIES, WITH SOME OF THE BIGGEST NAMES IN THE BUSINESS. FROM LAUNCH TO SELL-OUT, MONTANA STEELE CRAFTS THE STORY OF HOW PEOPLE WANT TO LIVE.