



PARKSIDE
VILLAGE®

M I S S I S S A U G A

The Place to Be

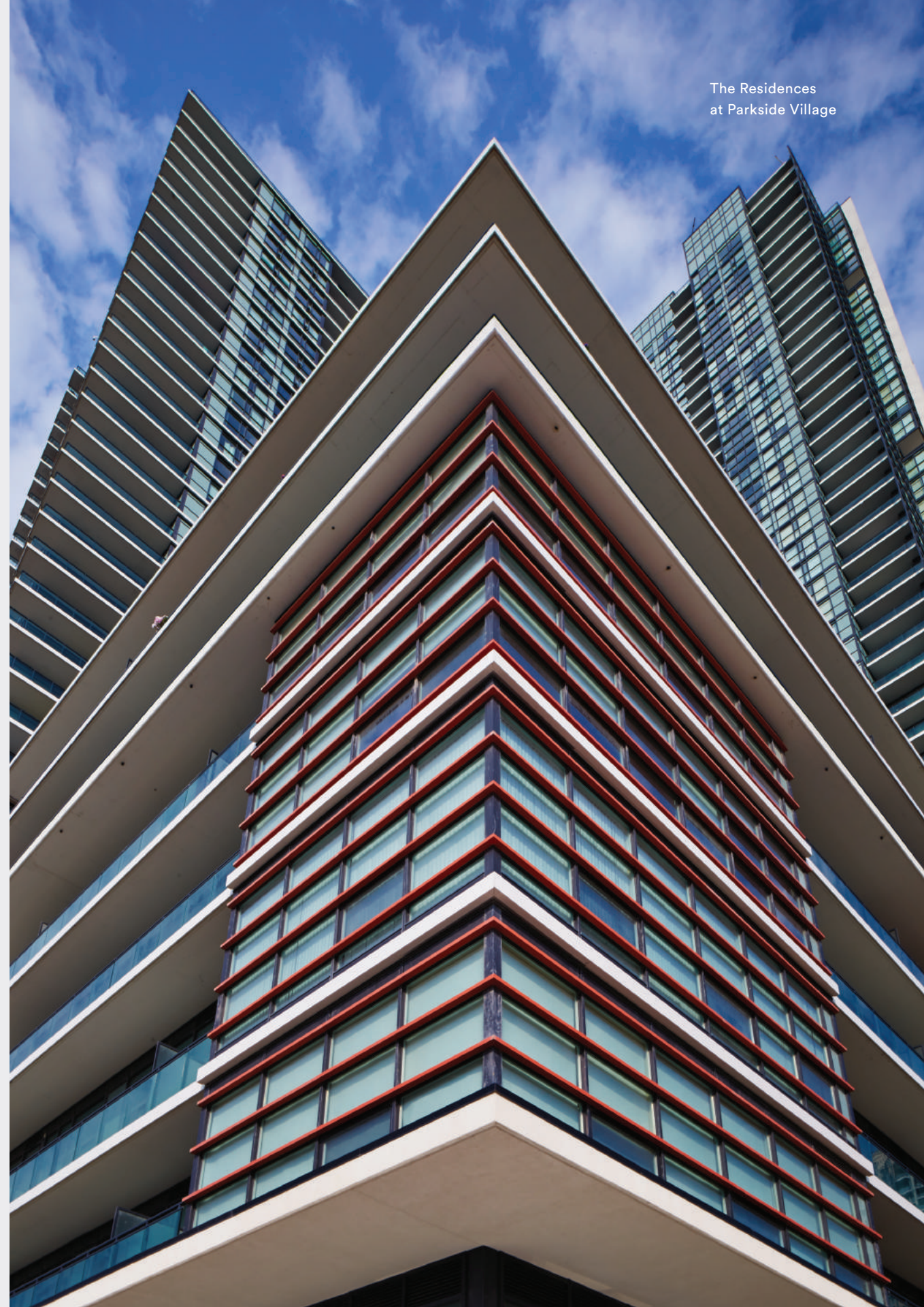


In 2003, Amacon envisioned an urban village unlike any other.

Sprawling across 30 acres and brimming with possibility, Parkside Village is in the heart of Mississauga's City Centre. Designed for residents to connect with each other and with their surroundings, Parkside Village will inject a new spirit and energy to this location through stunning architecture and inspiring urban planning.

With every convenience, you will discover the exceptional lifestyle that a true urban village has to offer. Here, inviting cafés, shops, restaurants, and services are plentiful, and nothing is out of reach. Pedestrian-friendly streets, landscaped promenades, and over 2.4 acres of outdoor space are all just steps away. Life at Parkside Village is truly unrivaled.

The Residences
at Parkside Village





The Towns
at Parkside Village



PSV and PSV2
at Parkside Village

Parkside Village is the Place to Be



Mississauga is the Place to Call Home



Mississauga is **Canada's 6th largest city** and saw a **population increase of 1.1%** from 2011 to 2016.

1.1%↑



The total number of businesses with employees in Mississauga increased by 5.7% and **total employment grew by 4.2%**.

**Source: 2016 Mississauga Census*



Mississauga's economic portfolio boasts over **75 Fortune 500 companies** and 1,400 multi-national firms.



Sheridan College is a **Top-Five Research College**, and is located only 300 metres away.



Trillium Health Centre encompasses three main sites all within Mississauga, and is located **only 7.6 km away**.



Toronto Pearson International Airport is the primary airport that services the GTA and surrounding regions, and it is located only 20 km away.



MiWay, Mississauga's transit service, is the **third largest municipal transit system** in Ontario.



Mississauga is home to **495 parks**, 12 trails ranging from 1.9 km to 21.8 km, and a cycling network of approximately 500 km of multi-use trails and designated bike routes.



Square One Shopping Centre boasts over **330 shopping, dining, and entertainment options**, and is located only 500 metres away.



Mississauga's average price growth has been 10% over the last four years, putting it on trend with Toronto.

**Source: RealNet sub-market reports 2014-2018*

10%↑

The Place to Shop

Featuring an abundance of shops and services, Parkside Village hosts six commercial/retail block-faces spanning over 150,000 sq. ft. In addition, Ontario's largest shopping centre, Square One, is just steps away from home.



The Place for Entertainment

With culinary options like Earls, Jamie's Italian by Jamie Oliver, The Keg, and Cineplex just next door, you are only moments away from a great night out.



**This is a place to live, work,
and play. And that's what life
at Parkside Village is all about.**



The Place to Play

Parkside Village offers three parks
and vibrant outdoor spaces to walk,
play, and discover — all right here
within the neighbourhood.



Mississauga City Centre

A place to connect with community, to spend time outdoors, and to have direct connections to the city.

92 Walk Score

85 Transit Score



Transit

Local buses, Go Transit, Highway 403 and 401, and proximity to a main transit hub makes getting around easy. Also, Toronto Pearson International Airport is less than 20 km away.



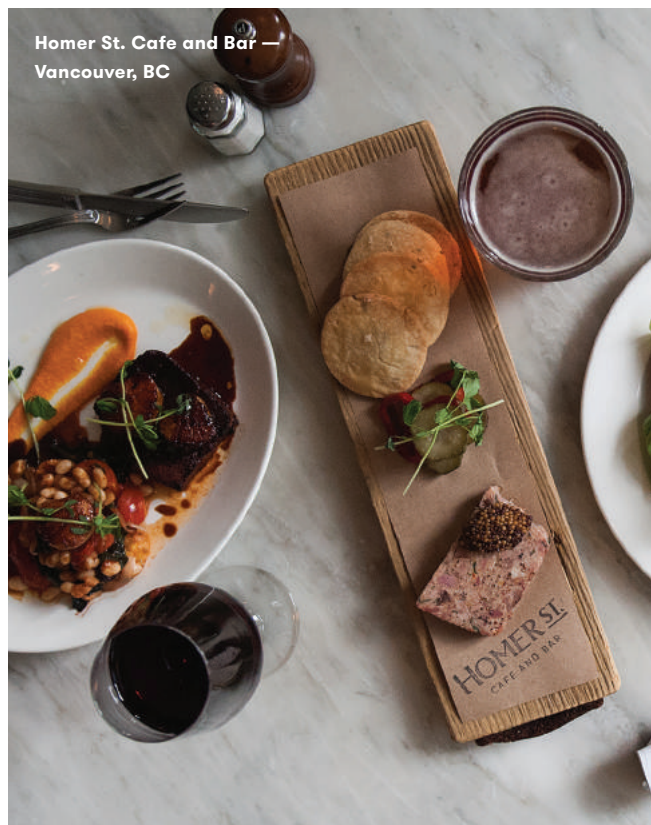
Retail

With Whole Foods Market, Square One Shopping Centre, Hudson's Bay Company, and Holt Renfrew close by, you'll have quick access to first-class retailers.



Schools

This kid-friendly neighbourhood has an abundance of schools close by, and features three parks and green spaces for outdoor family fun.



A M A C O N
L I V E W E L L[®]

For over 50 years, our business has been refining its vision for innovative living. As a result, Amacon is a leader in the development, construction, and management of profoundly livable communities.

Each development has contributed to our reputation for providing exceptional long-term value, while our dedication to customer care stands behind everything we build.

Alongside our residential work, we're proud to be providing jobs and growth in industrial, commercial, retail sectors, as well as hospitality, including our award-winning luxury hotel, The Lodan in Vancouver, BC. In everything we do, we believe in giving more Canadians the opportunity to live well[®] from coast to coast.

It's all here, at Parkside Village



Parkside Village Presentation Centre
465 Burnhamthorpe Road W, Mississauga, ON

905 273 9333
LifeatParkside.com

DEVELOPER



EXCLUSIVE BROKERAGE

